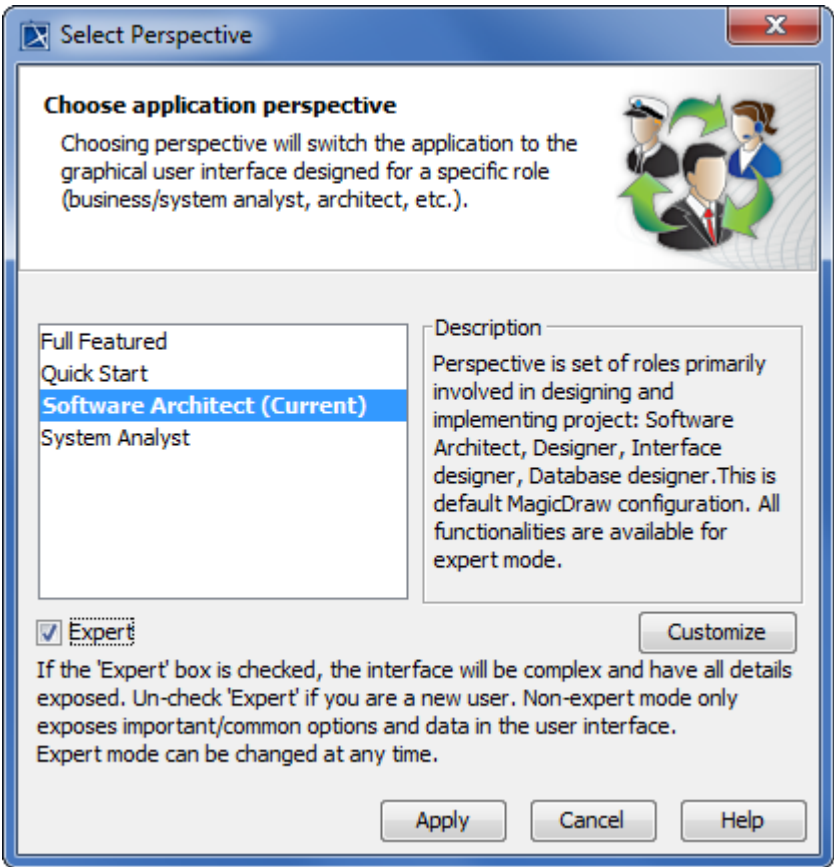


# Select Perspective dialog

When you launch a modeling tool for the first time, the **Select Perspective** dialog appears with the ability to switch between perspectives.



Element Name	Description
Full Featured Quick Start Software Architect System Analyst	List of the available perspectives with the predefined configuration.
Expert	Choose Expert mode only if you are an advanced user. All features and commands will be loaded.  If you are a new user, you should not select Expert mode. The non-expert mode only loads the basic and most important commands and features.
Customize	Open the <b>Customize Perspectives</b> dialog to customize the selected perspective. You can make your tool less complicated by hiding irrelevant features or commands.  For example, you can group functional features, show, or hide selected commands.