

Customizing diagrams

You can create your own diagram types for specific domains, platforms, technology, or other purposes using the **Customize Diagram Wizard**. This powerful engine enables the creation of custom elements in the diagram toolbar, custom symbol styles, and other customizations.

To open the **Customize Diagrams** dialog

- On the main menu, click **Diagrams > Customize**.

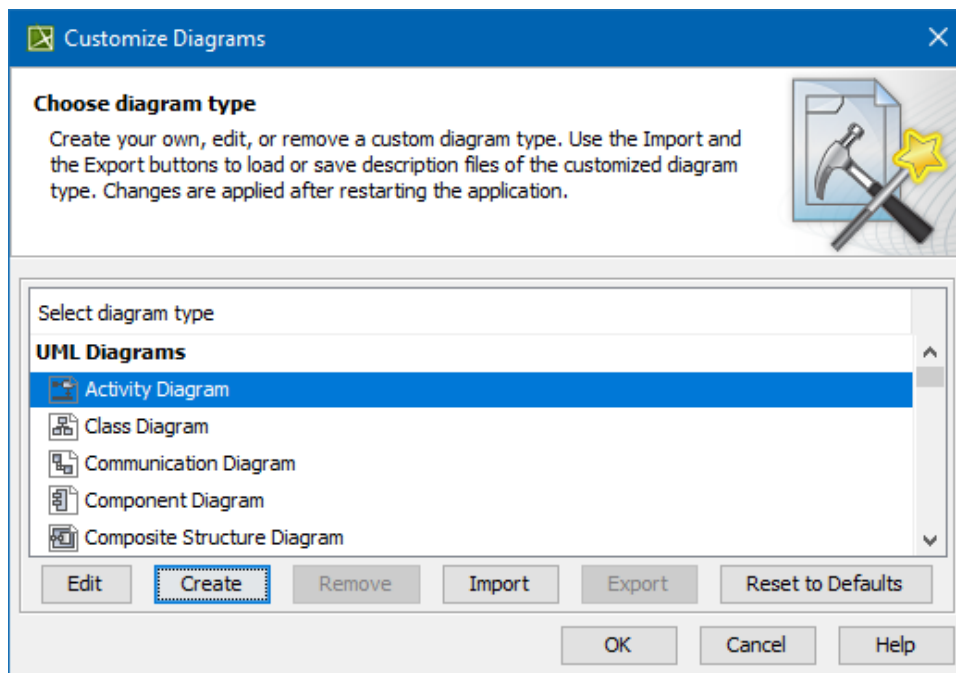
You can change the properties of existing diagrams (**Edit** function) or create your own brand new diagram type (**Create** function). Diagram customization descriptors are saved in a separate file for every diagram, so you are able to exchange these customizations with your partners or colleagues (use **Import** or **Export** function).

The **Reset to default** button in the **Customize Diagrams** dialog restores the default configuration for diagrams bundled with MagicDraw installation. It does not work with user-defined diagrams.

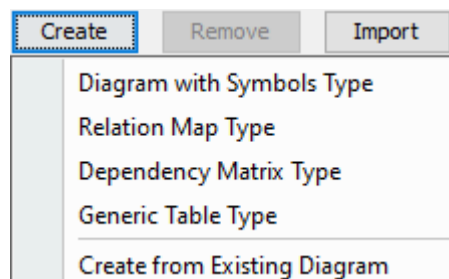
To open the **Customize Diagram Wizard**

Do either:

- In the **Customize Diagrams** dialog, select a diagram type and click **Edit**.



- Click **Create** and then select one of the following commands:
 - Diagram with Symbols Type**, if you need to create a new diagram type.
 - Relation Map Type**, if you need to create a new relation map diagram.
 - Dependency Matrix Type**, if you need to create a new matrix type.
 - Generic Table Type**, if you need to create a new generic table diagram.
 - Create from Existing Diagram**, if you need to create custom diagrams from existing ones.



Related pages

- [Creating new diagram type](#)
- [Creating new dependency matrix type](#)
- [Customizing diagram palette](#)