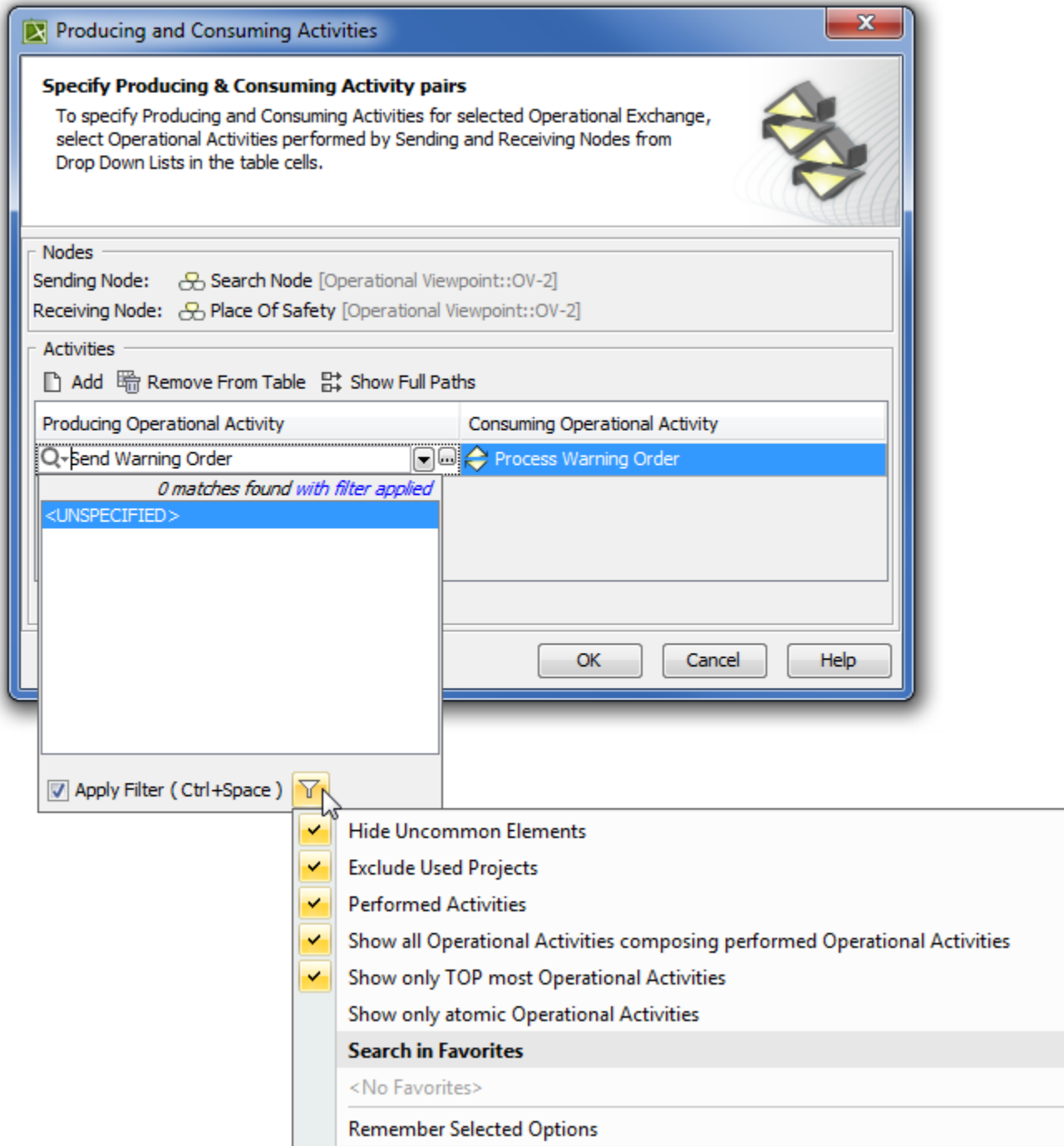


## Filtering Operational Activities and Functions

Use  to filter the activities and functions according to your needs in the:

- **Producing and Consuming Activities** dialog.
- **Producing and Consuming Functions** dialog.

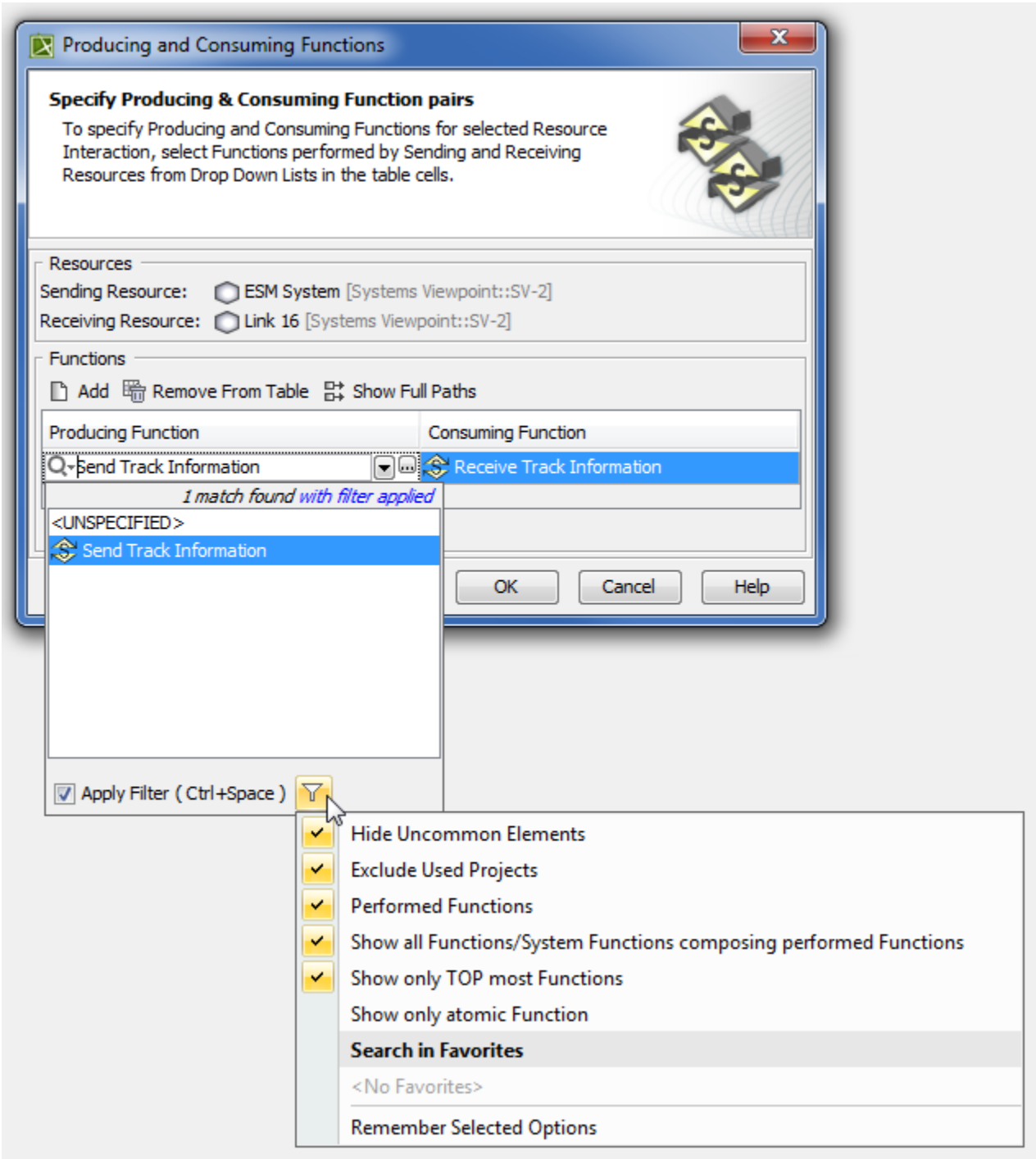
## Filtering Operational Activities



Filter Option	Filter allows the selection of...
None	None
Any	Any
At least one	At least one
At most one	At most one
Exactly one	Exactly one
At least two	At least two
At most two	At most two
Exactly two	Exactly two
At least three	At least three
At most three	At most three
Exactly three	Exactly three
At least four	At least four
At most four	At most four
Exactly four	Exactly four
At least five	At least five
At most five	At most five
Exactly five	Exactly five
At least six	At least six
At most six	At most six
Exactly six	Exactly six
At least seven	At least seven
At most seven	At most seven
Exactly seven	Exactly seven
At least eight	At least eight
At most eight	At most eight
Exactly eight	Exactly eight
At least nine	At least nine
At most nine	At most nine
Exactly nine	Exactly nine
At least ten	At least ten
At most ten	At most ten
Exactly ten	Exactly ten

<b>Performed Activities</b>	The Activities that are performed by the Node.
<b>Show all Operational Activities composing performed Operational Activities</b>	The Activities that are the composite parts of directly performed Activities.
<b>Show only TOP most Operational Activities</b>	TOP most Activities.
<b>Show only atomic Operational Activities</b>	The Activities that are composite parts of other Activities and do not have composite parts.

Filtering Functions



Filter Option	Filter allows the selection of...
---------------	-----------------------------------

<b>Performed Functions</b>	The Functions that are performed by the Resource.
<b>Show all Functions/ System Functions composing performed Functions</b>	The Functions that are the composite parts of directly performed Functions.
<b>Show only TOP most Functions</b>	TOP most Functions.
<b>Show only atomic Function</b>	The Functions that are composite parts of other Functions and do not have composite parts.

To apply filters

- Select appropriate options from the drop-down list.



the more concrete element selection, use different combinations of these filters.

#### Related procedures

- [Producing and Consuming Activities dialog](#)
- [Producing and Consuming Functions dialog](#)