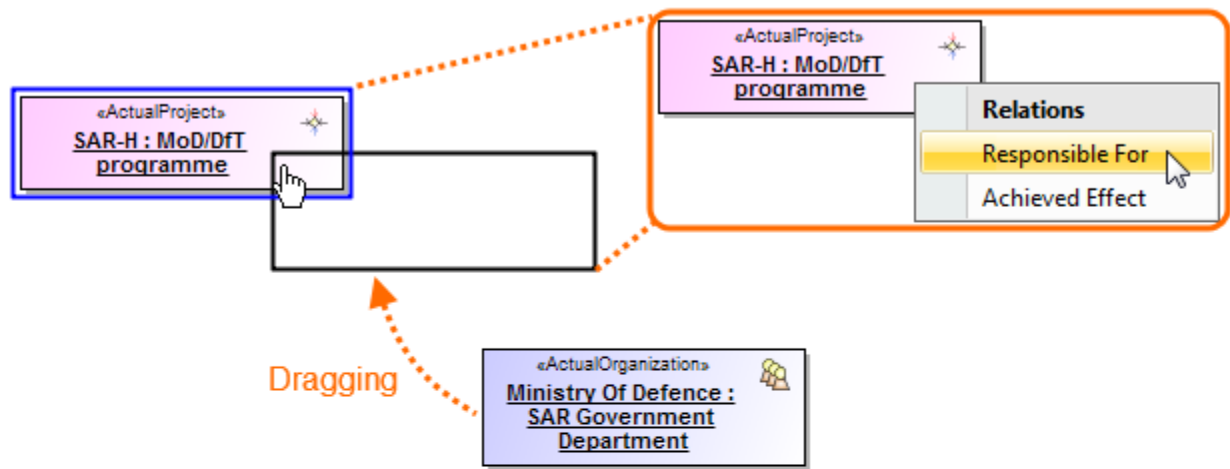


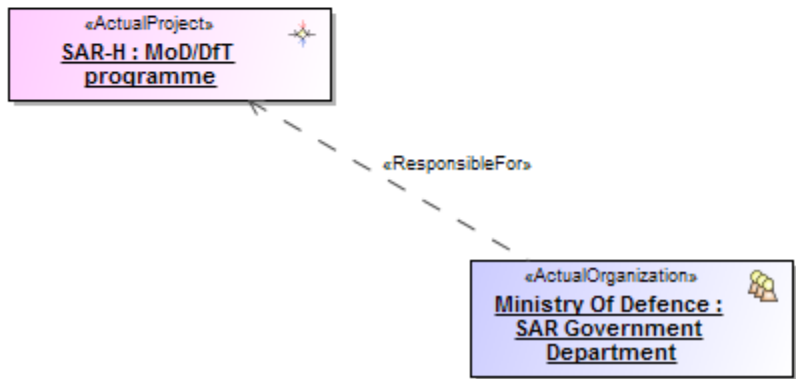
Using drag and drop

Create relationships or assign property values by dragging and dropping one element onto another right in the diagram pane.

Before



After



There are a number of predefined rules to create relationships or assign property values automatically. You may also set up your own drag-and-drop specifications between any elements.

To select a rule

1. Do one of the following:
 - Drag a selected element onto another, hold it for a few seconds and then release it. A shortcut menu is displayed.
 - Right-click an element and drag it onto another (This action is valid only for Windows operating system users). A shortcut menu is displayed.
2. From the shortcut menu, select one of the rules you want to apply.

The following table lists the predefined drag and drop rules. There rules define the possible results when dragging source element on the target element.

Source Element	Target Element	Created Relationship	Assigned Property
----------------	----------------	----------------------	-------------------

Actual Post	Actual Enduring Task	Achieved Effect	
Actual Organization	Actual Enterprise Phase		
Actual Person	Actual Project		
Fielded Capability	Actual Property Set		
	Actual Project Milestone		
	Actual Post		
	Actual Location		
	Actual Organization		
	Actual Person		
	Fielded Capability		
	Actual Measurement		
	Actual Project Milestone Role		
Activity	Capability	Maps To Capability	
Actual Post	Actual Post	Actual Resource Relationship	
Actual Organization	Actual Organization		
Actual Person	Actual Person		
Actual Post	Competence	Provides Competence	
Actual Organization			
Actual Person			
Actual Post	Operational Activity	Owens Process	
Actual Organization			
Actual Person			
Actual Organization	Actual Project	Responsible For	
Actual Post			
Actual Person	Actual Post	Fills Post	
Business Architecture	Actual Enterprise Phase	Business Architecture	
Service Specification	Capability	Exhibits	
Actual Enduring Task			
Software			
Capability Configuration			
Responsibility			
Actual Enterprise Phase			
Resource Architecture			
Natural Resource			
Operational Performer			
Agreement			
Person			
Organization			
Known Resource			
Business Architecture			
Resource Artifact			
Post			

Actual Person Responsibility Person Organization Post Actual Organization Actual Post	Competence	Requires Competence	
Responsibility Person Organization Post Capability	Actual Enduring Task Actual Enterprise Phase Actual Project Actual Property Set Actual Project Milestone Actual Post Actual Location Actual Organization Actual Person Fielded Capability Actual Measurement Actual Project Milestone Role	Desired Effect	
Function	Operational Activity	Implements	
Operational Performer	Operational Activity	Is Capable To Perform	
Operational Activity Action	Operational Role	Performs In Context	
Protocol	Operational Port Resource Connector Resource Port	Implements	
Resource Architecture	Actual Enterprise Phase	Resource Architecture	
Service Specification	Service Function	Is Capable To Perform	
Resource Architecture Software Capability Configuration Natural Resource Responsibility Agreement Person Organization Resource Artifact Post	Function	Is Capable To Perform	

Resource Architecture Software Capability Configuration Natural Resource Responsibility Agreement Person Organization Resource Artifact Post	Operational Performer	Implements	
Service Function	Service Operation		abstractBehavior
Condition Environment	Activity		activityPerformableUnderCondition
Standard	Any UAF Element		conformsTo
Condition Environment	Exhibits		environmentalConditions
Enterprise Goal	Actual Enterprise Phase		goals
Logical Architecture	Actual Enterprise Phase	Logical Architecture	
Physical Architecture	Actual Enterprise Phase	Physical Architecture	
Measurement Set	Resource Role Resource Exchange Service Function Function Action Service Parameter Resource Constraint Standard Operational Activity Problem Domain Control Operational Connector Operational Role Operational Constraint Command Service Policy Operational Activity Provides Competence Operational Activity Action Function	Measurement Set	MeasurementSet
Actual Project Milestone	Actual Person Fielded Capability Actual Organization Actual Post		milestone
Function	Resource Role		performsInContext

Actual Location	Resource Role		physicalLocation
	Software		
	Capability Configuration		
	Responsibility		
	Problem Domain		
	Operational Role		
	Resource Architecture		
	Natural Resource		
	Operational Performer		
	Agreement		
	Person		
	Organization		
	Known Resource		
	Business Architecture		
	Resource Artifact		
	Post		
Function	Resource Method		realizes
Operational Activity	Operational Method		realizes
Condition Environment	Resource Role		requiredEnvironment
	Software		
	Capability Configuration		
	Responsibility		
	Problem Domain		
	Operational Role		
	Resource Architecture		
	Natural Resource		
	Operational Performer		
	Agreement		
	Person		
	Organization		
	Known Resource		
	Business Architecture		
	Resource Artifact		
	Post		
Vision Statement	Enterprise Vision		statement
Actual Enduring Task	Actual Enterprise Phase		statementTasks
Enterprise Vision	Actual Enterprise Phase		visions