

Resources Processes

Description

The Resources Processes (Rs-Pr) domain describes the functions that are normally conducted in the course of implementing operational activities in support of capabilities. It describes the functions, their inputs/outputs, function actions and flows between them.

The Resources Processes (Rs-Pr) domain addresses human and system functionality.

The primary purposes of The Resources Processes (Rs-Pr) domain are to:

- Develop a clear description of the necessary data flows that are input (consumed) by and output (produced) by each resource.
- Ensure that the functional connectivity is complete (i.e., that a resource's required inputs are all satisfied).
- Ensure that the functional decomposition reaches an appropriate level of detail.

The intended usage of the The Resources Processes (Rs-Pr) domain includes:

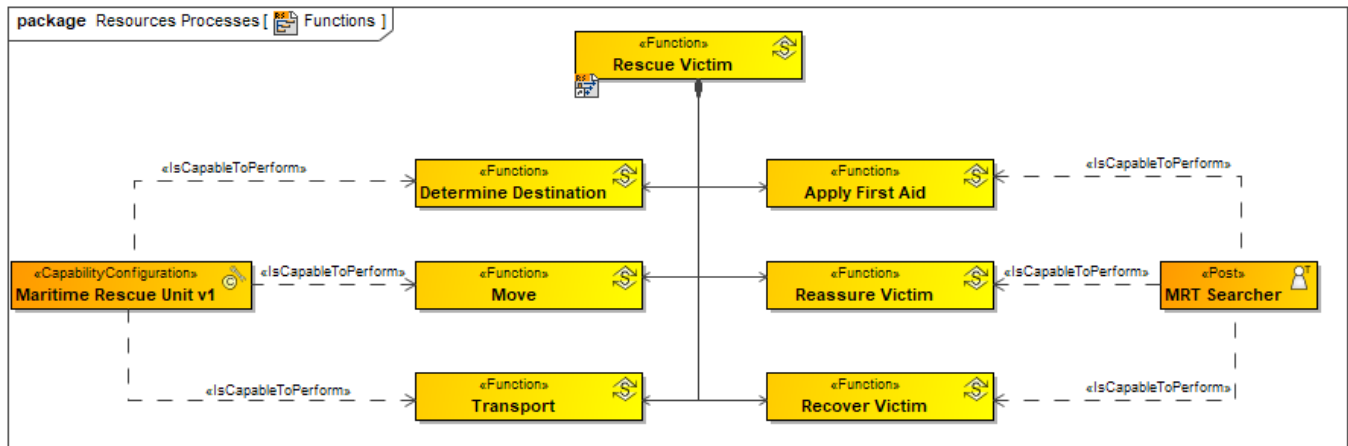
- Description of task workflow.
- Identification of functional system requirements.
- Functional decomposition of systems.
- Relate human and system functions.

Implementation

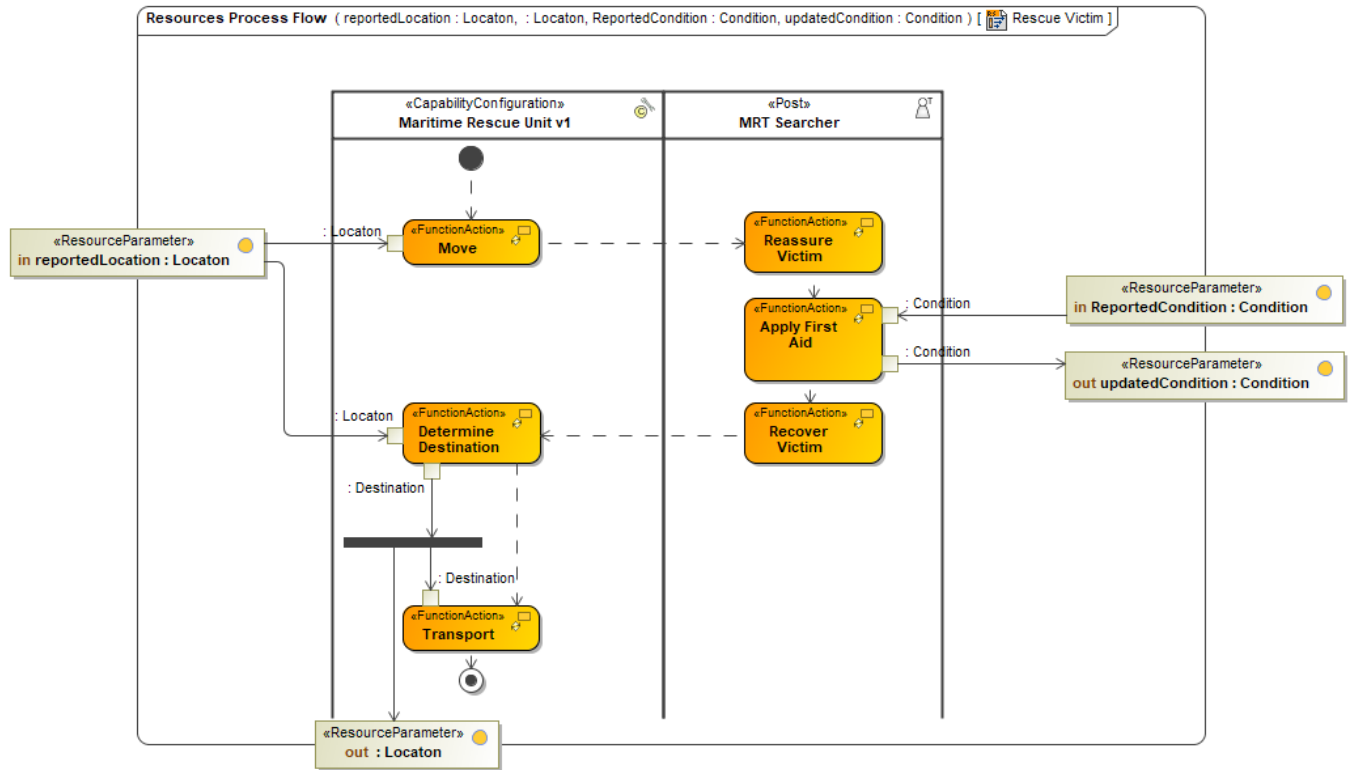
The Resources Processes (Rs-Pr) domain is represented by:

- [Resources Processes diagram](#).
- [Resources Processes Flow diagram](#).
- Resources Processes Flow (BPD) diagram. It is based on BPMN Process Diagram (BPD) and describes a sequence or flow of activities in an organization that shows how the business work. The diagram shows activities, events, and data that trigger or feed business activities.
- [Implementation Matrix](#).

Sample



An example of the process diagram



An example of the process flow diagram

Related elements

- [Activity](#)
- [Condition](#)
- [Data Element](#)
- [Function](#)
- [Function Action](#)
- [Function Control Flow](#)
- [Function Edge](#)
- [Function Object Flow](#)
- [Operational Activity](#)
- [Physical Resource](#)
- [Resource Architecture](#)
- [Resource Exchange](#)
- [Resource Exchange Item](#)
- [Resource Parameter](#)
- [Resource Performer](#)
- [Resource Role](#)
- [Service Function](#)

Related procedures

- [Working with Resources Processes diagram](#)
- [Working with Resources Processes Flow diagram](#)
- [Creating Process Flow Diagrams From Compositions or Aggregations Defined in Process Diagrams](#)
- [Implementation Matrix](#)