

# Lr Lines of Development

## Description

The Lr Lines of Development view specifies the logical threads (lines of development) for a set of projects and programmes. The status of each of these threads can be shown at the various milestones in the projects or programmes. The Lr view is primarily intended to support the acquisition process across multiple projects or programmes, including the management of dependencies between projects and the integration of all the DLODs to achieve a successfully integrated military capability.

Use of the Lr view should support the management of capability delivery and be aligned with [Cr](#) Capability Roadmap view.

The Lr view may be used for:

- Project management and control (including delivery timescales).
- Project dependencies and the identification of associated risk.
- Portfolio management.
- Through Life Management Planning (TLMP).

## Implementation

The L3 view can be represented using:

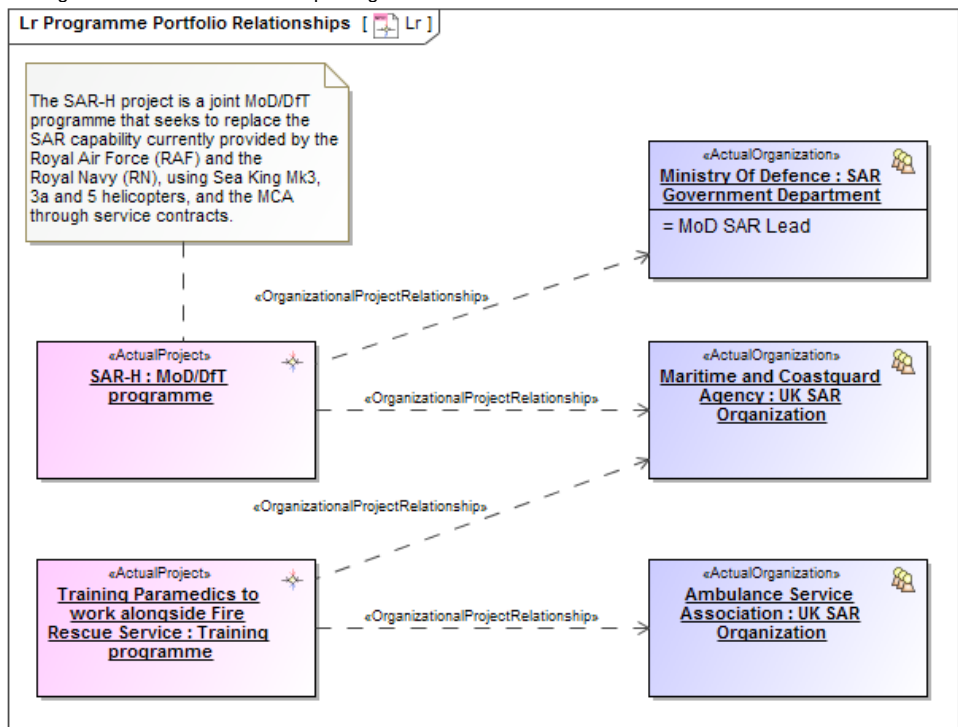
- Lr Programme to Capability Mapping matrix.

Criteria

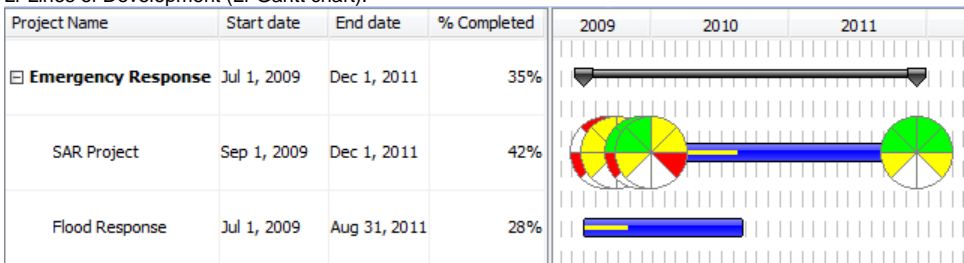
Select Row Scope: NATO Capability Viewpoint

	Emergency Response Enhancement	Flood Response	SAR-H : MoD/DfT programme	SAR Project : DLOD Project	Training Paramedics to work alongside Fire Rescue Service :...
Assistance				✓	
Distress Signal Monitoring					
Inform					
Land SAR					
Maritime SAR				✓	
Military C2					
Recovery				✓	
SAR					
SAR C2					
Search				✓	
UK SAR Capability					

- Lr Programme Portfolio Relationships diagram.



- Lr Lines of Development (Lr Gantt chart).



- Lr Responsibility Matrix.

Criteria

Select Row Scope: NPV-1,NPV-2 ... Select Column Scope: D2 ...

	Ambulance Service Association : UK SAR Organization	Department Of Transport : SAR Government Department	DoT SAR Lead : UK SAR SC Member	Lifeboat Driver : MRT Driver	Maritime and Coastguard Agency : UK SAR Organization	Ministry Of Defence : SAR Government Department	MoD SAR Lead : UK SAR SC Member	Radio Operator : MRT Communicator	Rescue Swimmer : MRT Swimmer	RNLI : UK SAR Organization
Emergency Response Enhancement [NATO Programme Viewpoint::NPV-1]										
Flood Response [NATO Programme Viewpoint::NPV-1]										
SAR-H : MoD/DfT programme [NATO Programme Viewpoint::NPV-1]										
SAR Project : DLOD Project [NATO Programme Viewpoint::NPV-1]										
Training Paramedics to work alongside Fire Rescue Service : Training programme [NATO Programme Viewpoint::NPV-1]										

#### Related elements

- [Capability](#)
- [Project](#)
- [Maps To Capability](#)
- [Dependency](#)
- [Actual Organization](#)

- [Actual Post](#)
- [Actual Project](#)
- [Actual Project Milestone](#)
- [Actual Project Milestone Role](#)
- [Milestone Dependency](#)
- [Responsible For](#)
- [Project Milestone](#)
- [Project Milestone Role](#)
- [Project Sequence](#)
- [Project Status](#)
- [Project Theme](#)
- [Status Indicators](#)

#### **Related procedures**

- [Creating Lr Lines of Development. Lr Gantt chart](#)
- [Creating Lr Programme to Capability Mapping matrix](#)
- [Creating Lr Responsibility Matrix](#)
- [Creating Lr Programme Portfolio Relationships diagram](#)
- [Manipulations in Lr Lines of Development. Lr Gantt chart](#)