

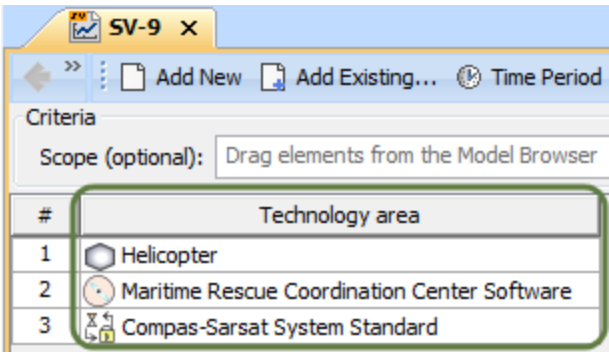
# Time Periods dialog

Related Pages:

- [Forecast Kinds in Time Periods dialog](#)

## Time Periods

In the UPDM plugin, time periods are used to specify resources for the architecture against a timeline indicating when they are expected to be in use. Time periods can be defined when the subjects, or resources, of the forecast are already added in the table. As shown below, the **Technology area** column must be filled in with resources **before** adding a specific time period.

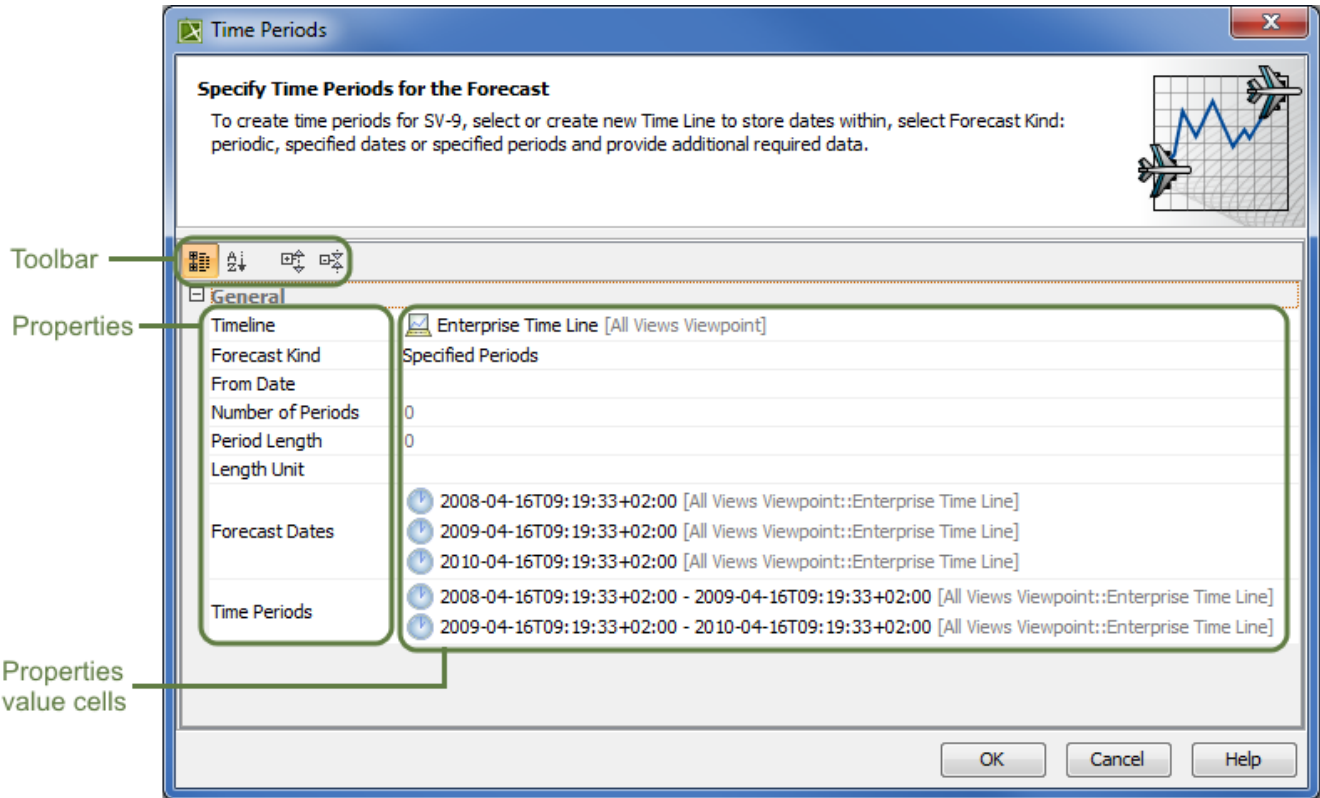


## Time Periods Dialog

The **Time Periods** dialog is essential when defining time periods for the **forecast of the resources**.

The **Time Periods** dialog consists of three areas:

- **Toolbar** - This area allows you to control how properties in the dialog are displayed: Categorized view, Alphabetical view, Expand all, Collapse all.
- **Properties** - Provides a list of properties that are available to specify.
- **Properties value cells** - The fields where you can set values for each property.

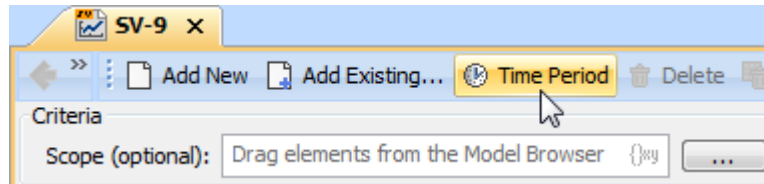


Time Periods dialog

Due to the abundance of buttons in the dialog, the instructions are broken down into two parts: General instructions and Specific instructions. General instructions will explain how to [open](#) the Time Periods dialog and how to approach the main part of the Time Periods dialog: the [Timeline](#). Specific instructions will explain how to specify [Forecast Kinds](#) in the dialog.

To open the **Time Periods** dialog

- Open the **Time Periods** dialog, click  **Time Period** on the table toolbar.



#### Button Visibility


The button "Time Period" is visible **only** in the **Forecast** diagram or any diagram containing a forecast.

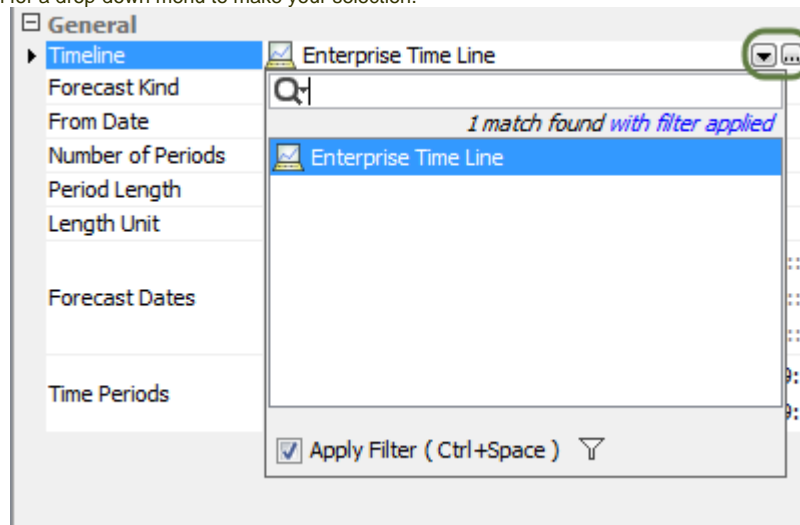
## Specifying Timelines


When specifying timelines, you can either [select](#) a pre-existing timeline or [create](#) a new one.

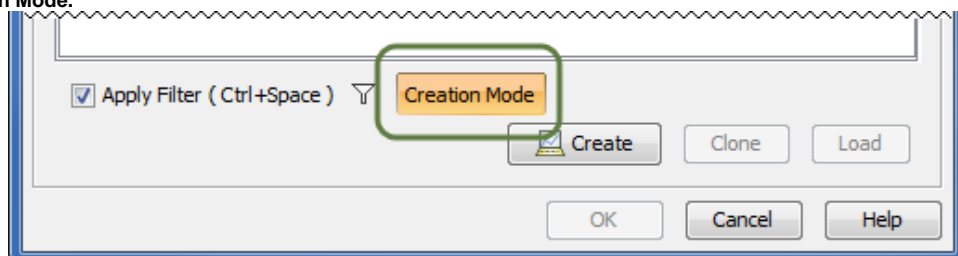
To specify the **Timeline**

There are two things you can do here:

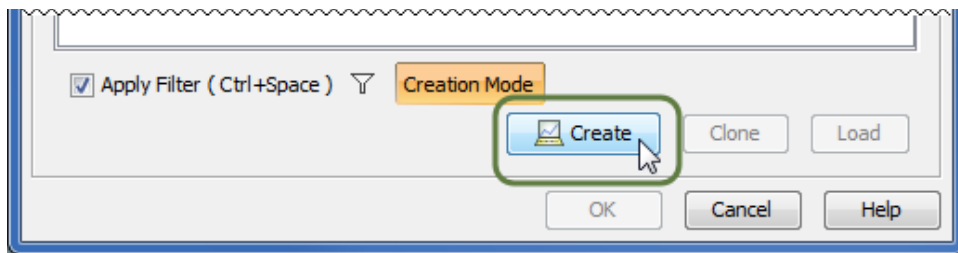
- Select a pre-existing Timeline.
  - Click , or Alt+Down for a drop-down menu to make your selection.



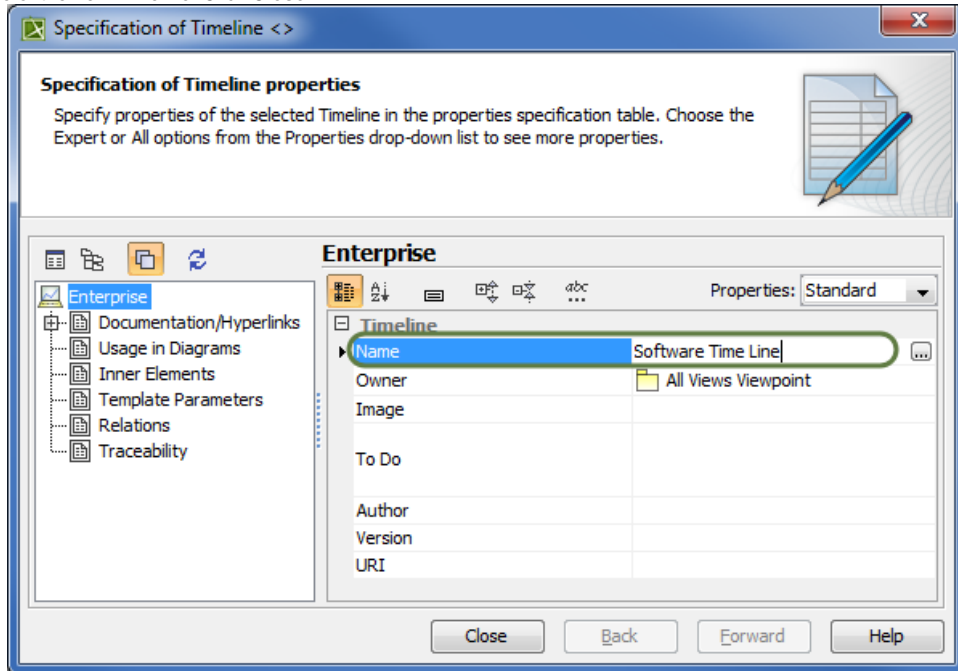
- Create a new Timeline.
  - Click  for a **Select Timeline** dialog.
  - Click **Creation Mode**.



- Select the appropriate package from the list in which you want to store a new Timeline.
- Click **Create**. (Shortcut: Right-click and click **Create**.) The new Timeline's specification window opens.



5. Type the name of the new Timeline. Click **Close**.



6. Click **OK**.

#### Related procedures

- [Creating P1 Technology Forecast table](#)
- [Creating A8 Standards Forecast table](#)
- [Creating StdV-2 table](#)
- [Creating SvcV-9 table](#)
- [Creating SV-9 table](#)

#### Sample Model:

The model used in the figures of this page is the **DoDAF Sample**. To open this sample, do one of the following:

- Download [DoDAF Sample.mdzip](#).
- Find in modeling tool <modeling tool installation directory>\samples\UPDM\DoDAF Sample.mdzip