

# NOV-4 Organizational Relationships Chart

## Description

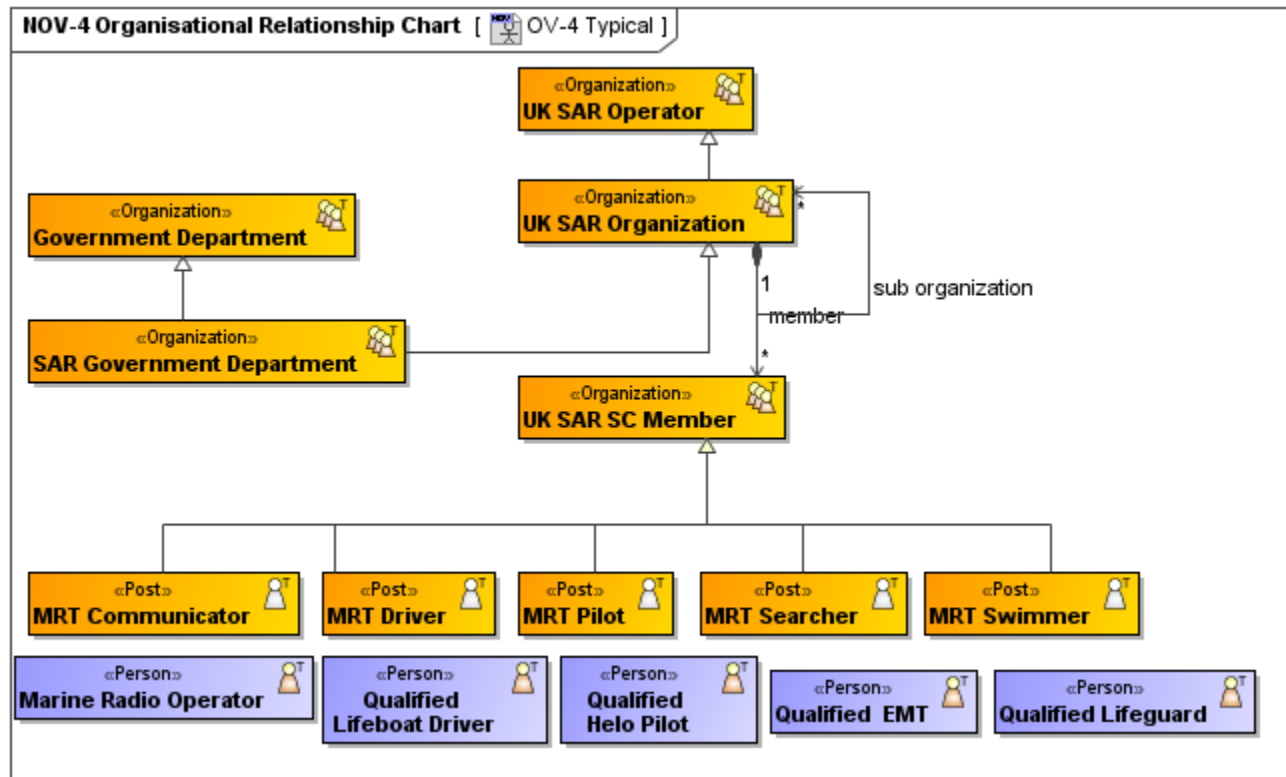
The NATO Organizational Relationships Chart illustrates the command structure or relationships (as opposed to relationships with respect to a business process flow) among human roles, organizations, or organization types that are the key players in architecture. NAF divides The NOV-4 in two views: an NOV-4 Typical and an NOV-4 Actual.

## Implementation

NOV-4 can be represented using:

- NOV-4 diagram which is based on the UML Class diagram.
- UML Class diagram.
- SysML Block Definition diagram.

## Sample



NOV-4 Organizational Relationships Chart

## Related elements

- Organization
- Post
- Person
- Command
- Competence
- Provides Competence
- Requires Competence
- Actual Organization
- Actual Post
- Actual Person
- Fills Post
- Actual Resource Relationship
- Actual Organization Role
- Operational Activity
- Owns Process

## Related procedures

- [Creating NOV-4 diagram](#)

- Instantiating structures