

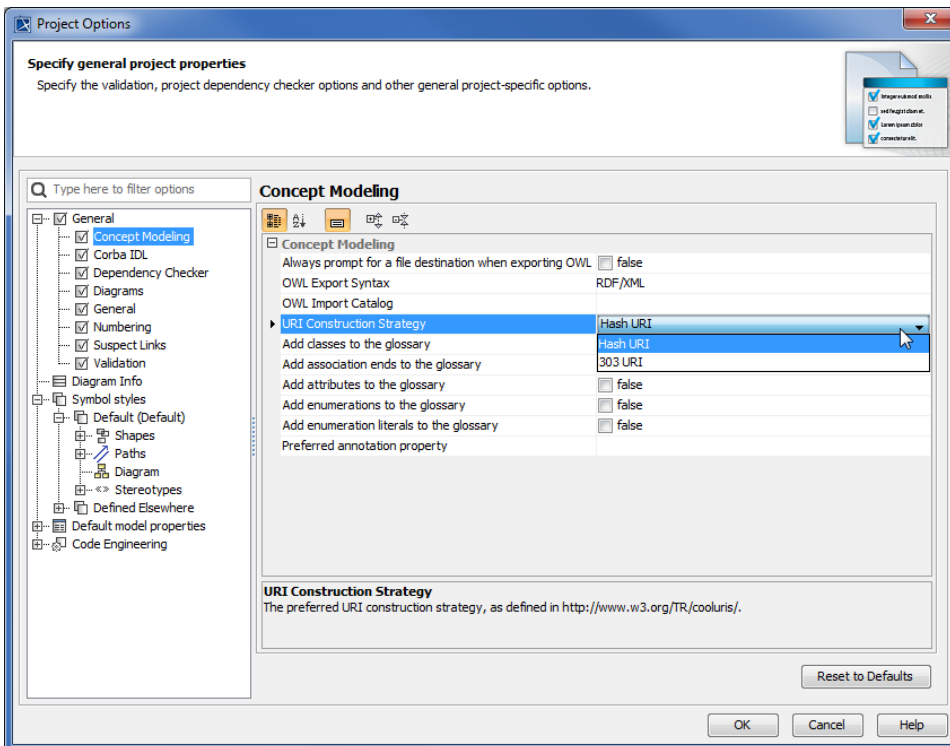
# Setting the concept model export URI style

Uniform Resource Identifier (URI) is necessary for your concept model before the model can be exported to an OWL ontology. If you would like to learn more about URI, please read [Concept model export URI style](#).

**Note**  
If the last character of the «Model» URI is a hash or slash and different from the selected **URI Construction Strategy** in **Concept Modeling** options, the delimiter will be removed.

To select a concept model export URI style for a MagicDraw project

1. On the main menu, click **Options > Project**. The **Project Options** dialog opens.
2. In the left pane of the dialog, select **General** and **Concept Modeling**.
3. Click in the field next to **URI Construction Strategy**.
4. Select either **Hash URI** or **303 URI**.



## Related pages

- [Usage](#)
- [Exporting your concept model to an OWL ontology](#)