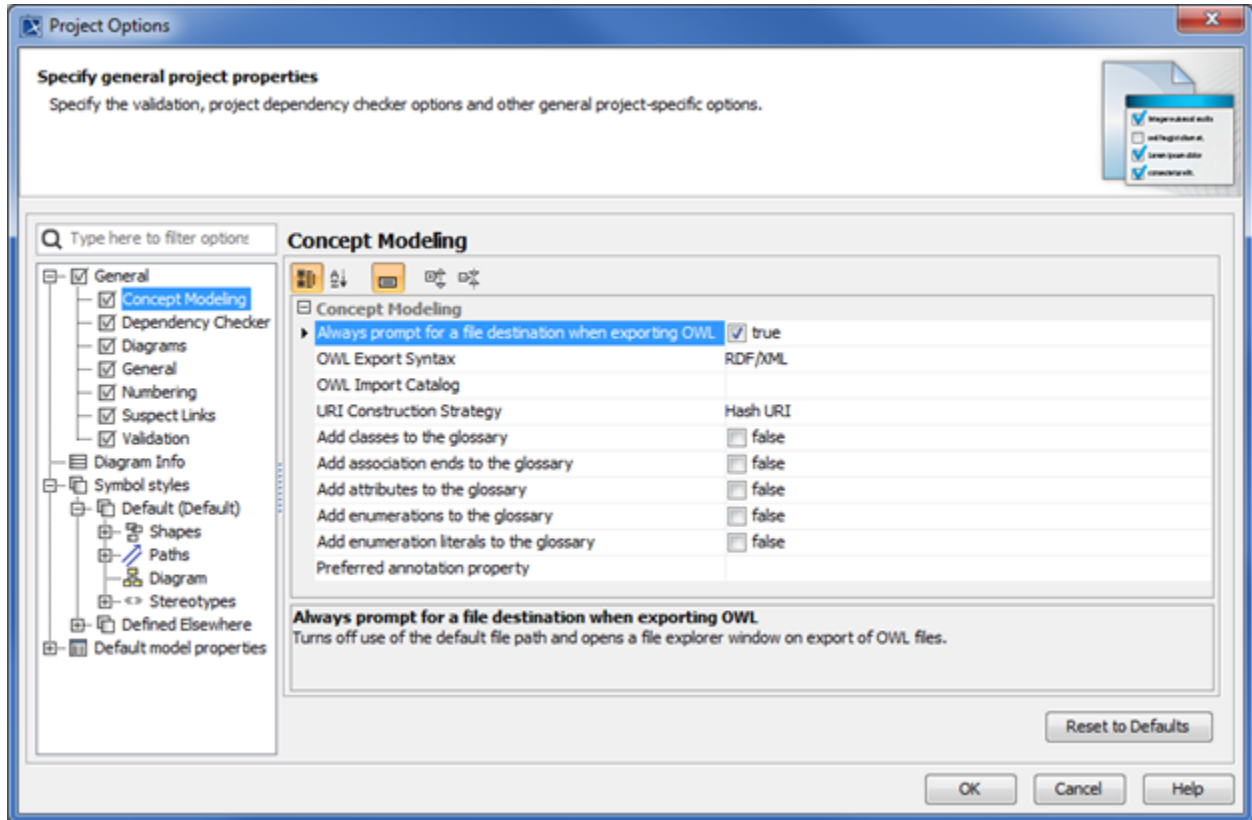


# Exporting a concept model from TWCloud to an OWL ontology

When exporting your model to an OWL ontology, you can let the Concept Modeler export it to the previous OWL export location or your selected directory. See [OWL Export Folder](#) to learn more about the OWL export location options.

If the option **Always prompt for a file destination when exporting OWL** in the **Project Options** dialog is enabled, the Concept Modeler will always prompt you to select an OWL export file location every time you export the concept model. The following figure below shows the prompt for OWL export folder option is enabled (set as **true**).



Prompt for an OWL export file destination option.



## Tip

You do not have to lock the concept model to export it to an OWL ontology.

The following steps explain how to export a concept model that you have added to TWCloud.

To export a concept model in TWCloud to an OWL ontology

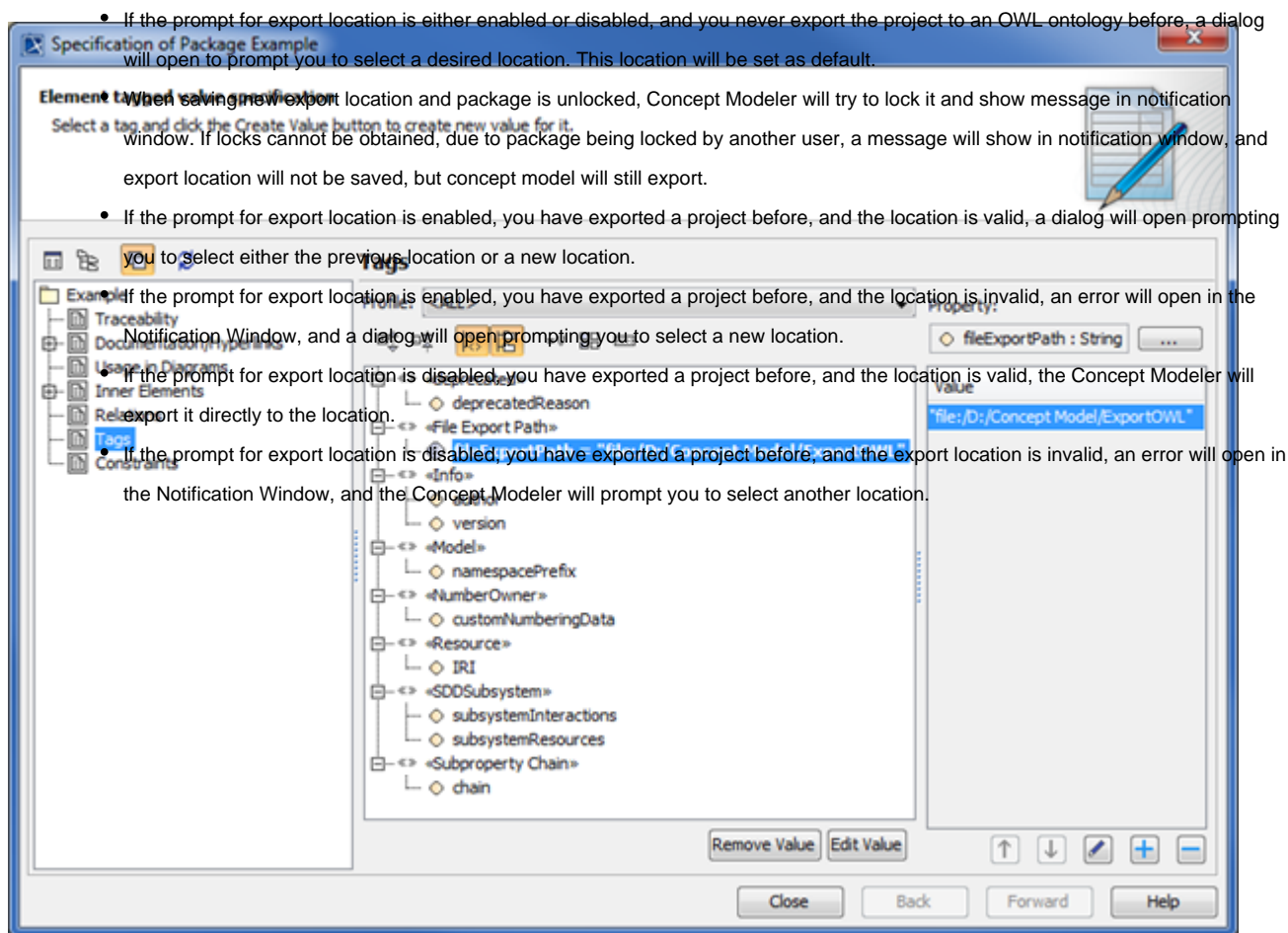
1. Right-click a concept model in the Containment tree.
2. Select **Concept Modeling > Export Model to OWL** to export the concept model.



## Note

When you would like to select multiple packages, you must right-click on one of the packages to export. You will always receive a prompt for file destination which is applied to all of your packages and the same file location will be loaded to all the packages. You are able to select different file destinations for each package, but the software always saves the same starting location for each package.

The error that appears in the Notification Window when trying to export the concept model to an OWL ontology can be caused by entering an incorrect path name or the path name to the previous export location does not exist anymore. If you encounter this type of error, you need to open the **fileExportPath** tagged value in the model's **Specification** dialog and correct the path name, or select another location.



The OWL export destination directory in the model's Specification dialog.

For more information about changing the OWL export location, see [Exporting a Concept Model to an OWL ontology](#).

#### Related pages

- [Usage](#)
- [Adding a concept model to Teamwork Cloud and export it as an OWL ontology](#)