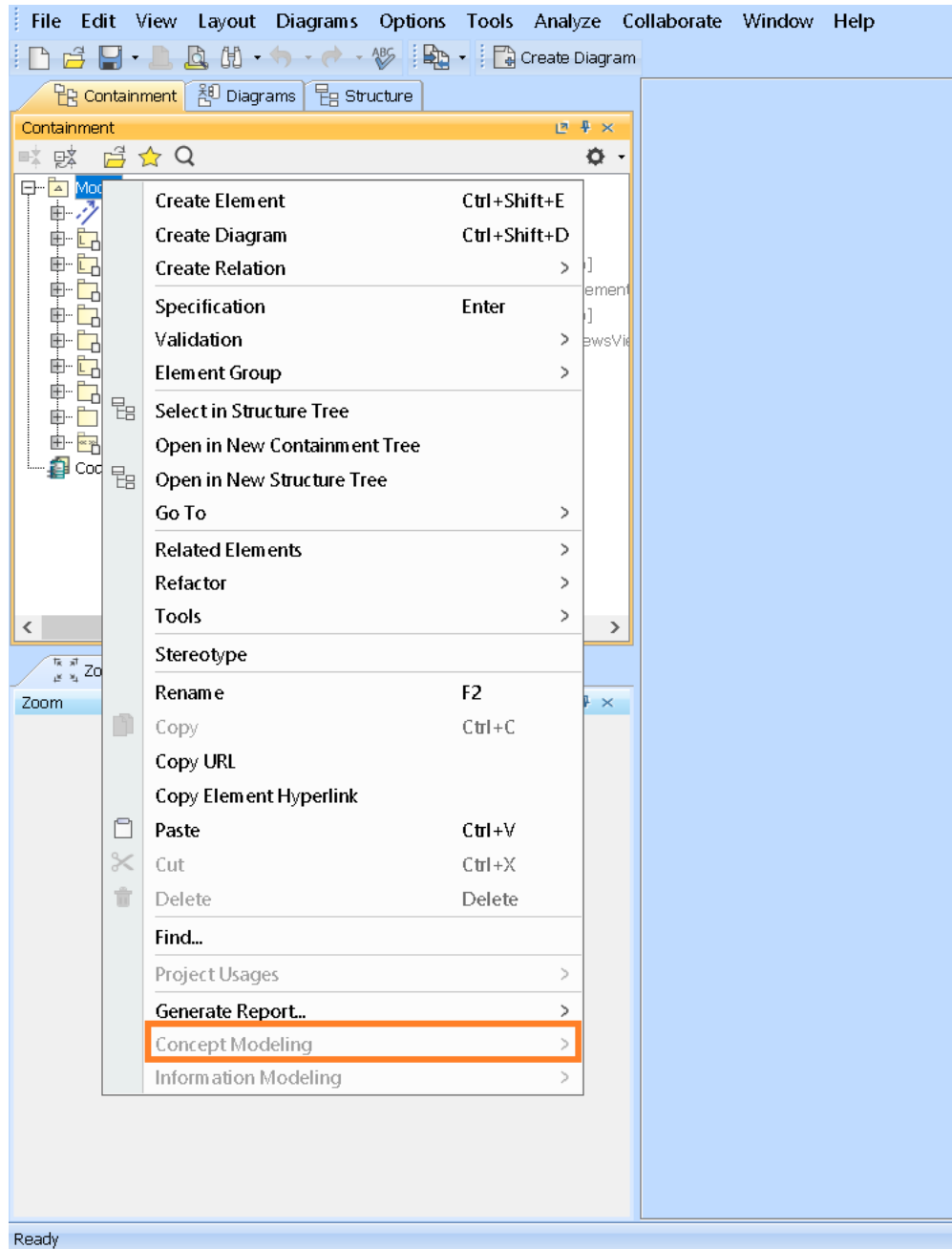


# Using Concept Modeling Capabilities with non-CCM projects

MagicDraw allows you to enable all the functionalities of Cameo Concept Modeler (CCM) plugin when you are working in a non-CCM project by adding the **Concept Modeling Profile** to your non-CCM project using the **Project Usages** dialog.

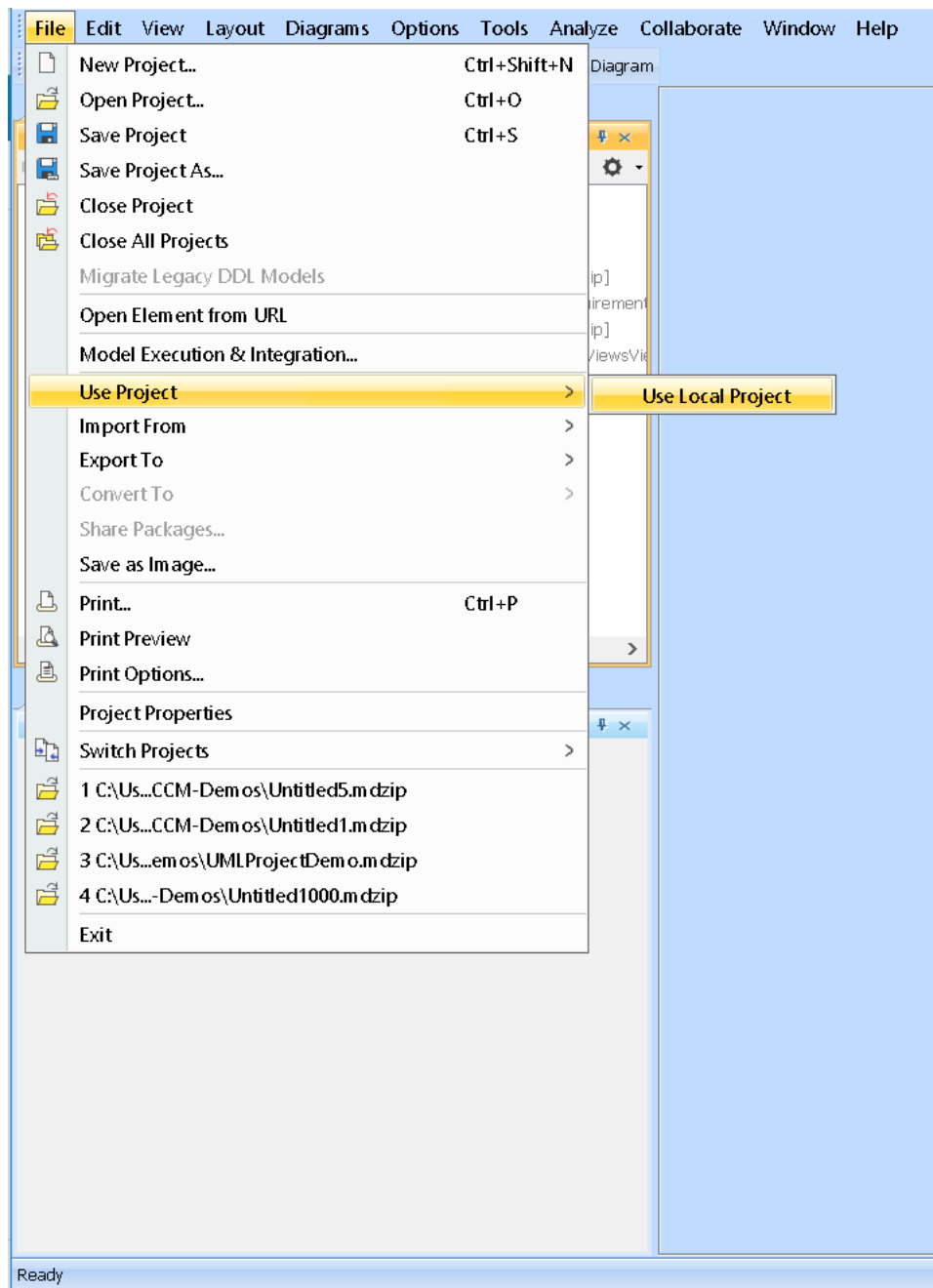
When working with a non-CCM project, e.g. a SysML project, you cannot select the **Concept Modeling** option.



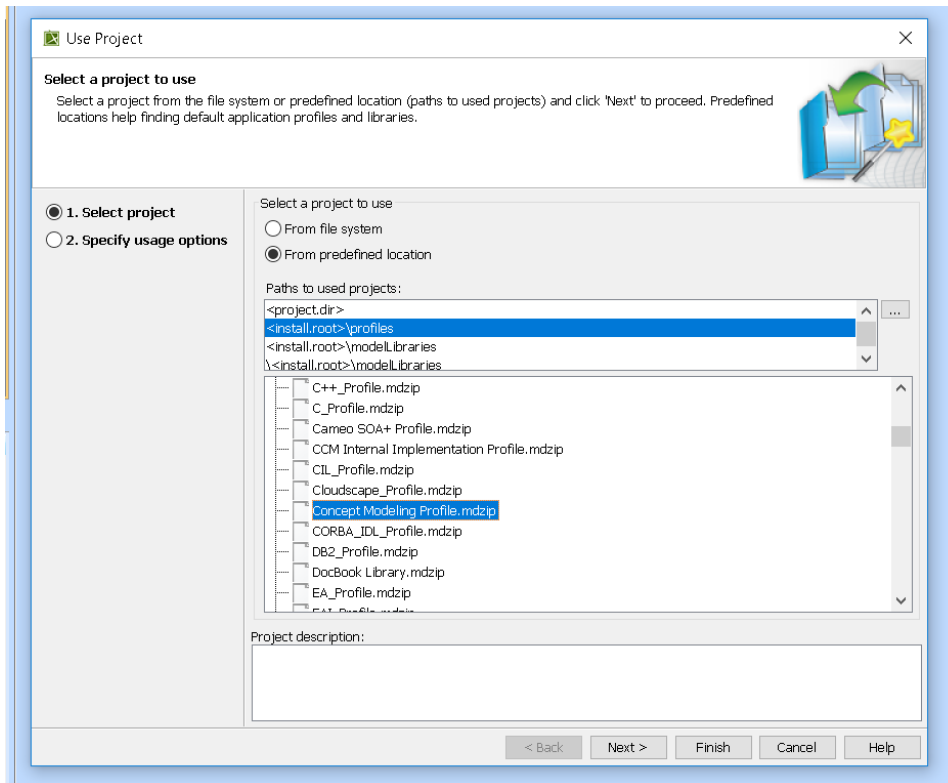
The **Concept Modeling** option is grayed out.

To add the **Concept Modeling** profile using **Project Usages**

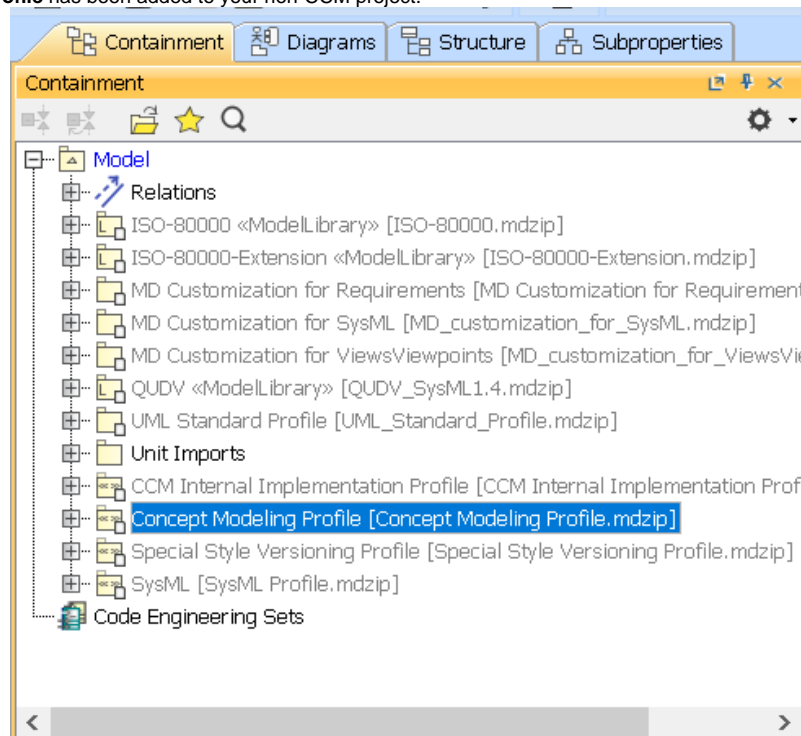
1. If you have already installed the CCM plugin, click **File > Use Project > Use Local Project**.



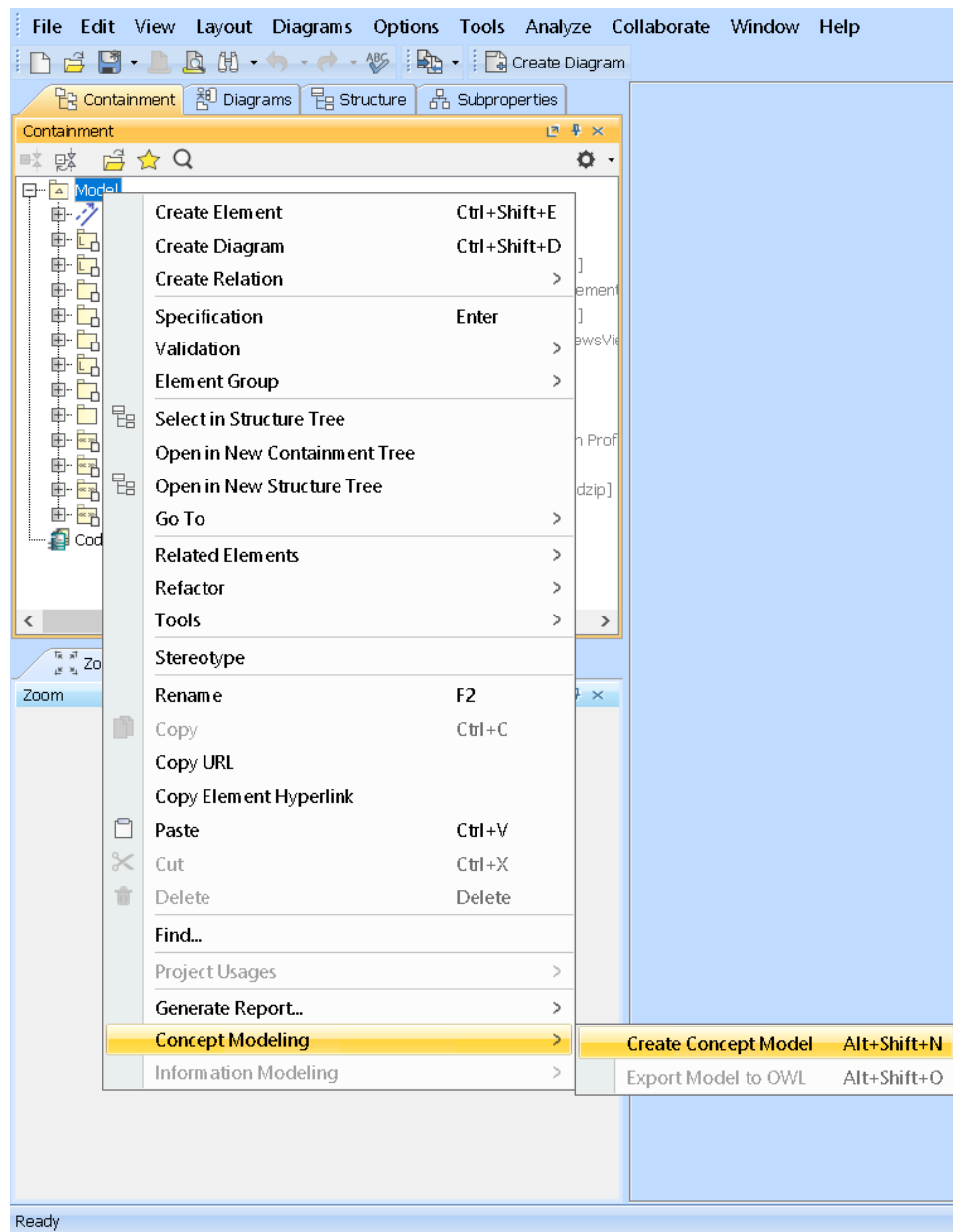
2. Select the options as shown below.



3. Click **Next**.
4. Select the **Read Only** option. Click **Finish**.
5. The **Concept Modeling Profile** has been added to your non-CCM project.



6. You can now choose the **Concept Modeling** option and create concept models.



You can now choose the **Concept Modeling** option, create a Concept Model, and benefit from all the CCM functionalities.

#### Related Pages

- [Usage](#)