

Project options

You can customize a simulation project, e.g., animation, simulation framework, and simulation engines through project options. When you save the project, those project options will also be saved. In addition, you can restore those options to default values with the **Reset to Defaults** button.

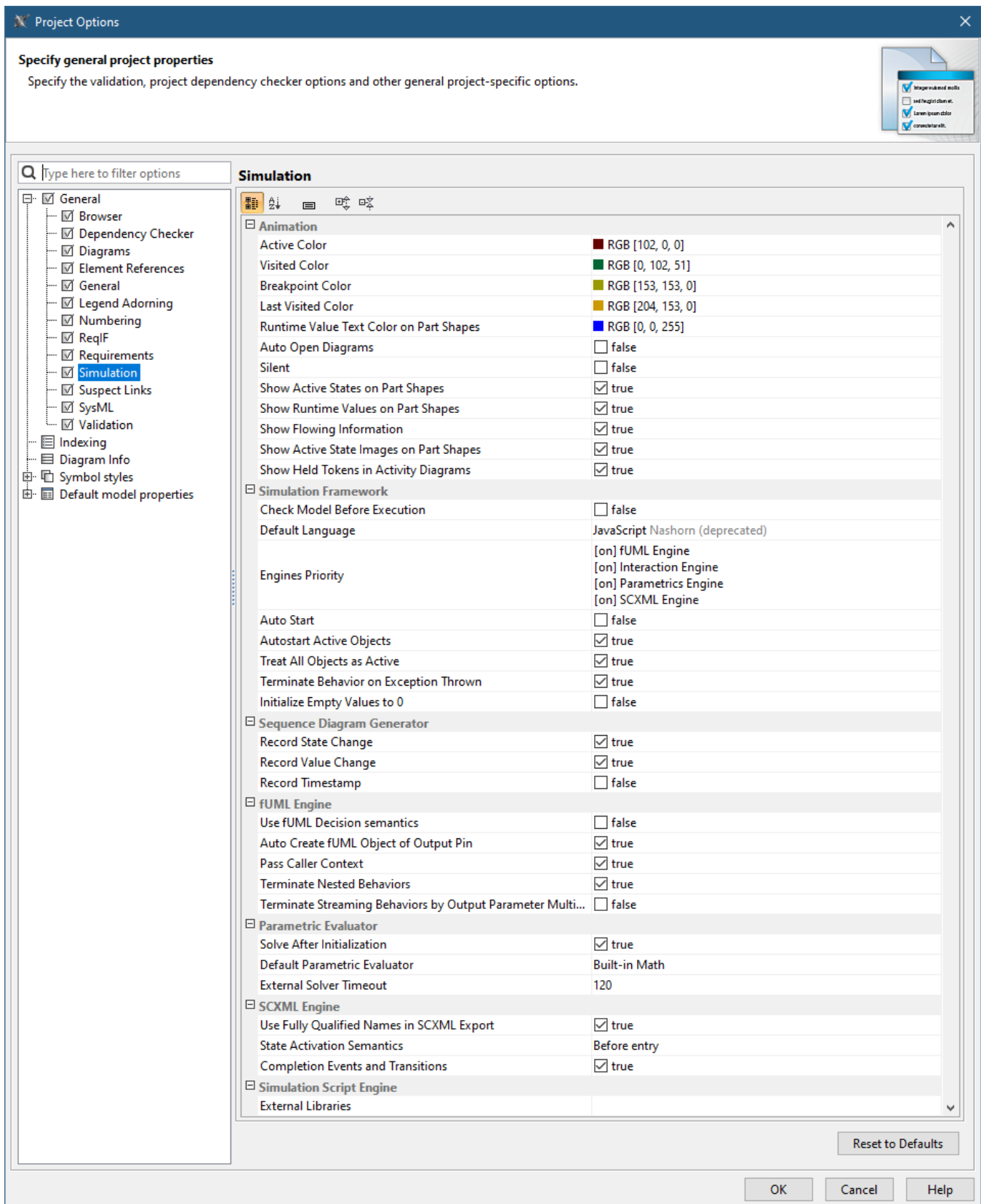
To customize project options

1. Open a simulation project.
2. On the main menu, click **Options** and select **Project**. The **Project Options** dialog opens.
3. On the left pane, click **General > Simulation**.



Note

The **Options > Project** command will be available only if one or more projects are open.



The Simulation Project Options dialog.

Groups of the project options are as follows:

- **Animation**

Customize animations of the simulation: colors of annotated elements, auto open diagrams, and silent options. See also [customizing animation](#).

- **Simulation Framework**
Customize general Behaviors of the simulation. See also [validation and verification](#) and [integration with external Evaluators](#).
- **Sequence Diagram Generator**
Record the Sequence diagram generator. See also [recording simulation as a Sequence diagram](#).
- **fUML Engine**
Customize Behaviors of Activity simulation. See also [Activity simulation engine](#).
- **Parametric Evaluator**
Customize Behaviors of Parametric simulation. See also [integration with external Evaluators](#) and [specifying the language for the expression](#).
- **SCXML Engine**
Customize Behaviors of State Machine simulation. See also [completion Events and Transitions](#) and [State activation semantics](#).
- **Simulation Script Engine**
Select JAR file(s) and load them to the script engine.