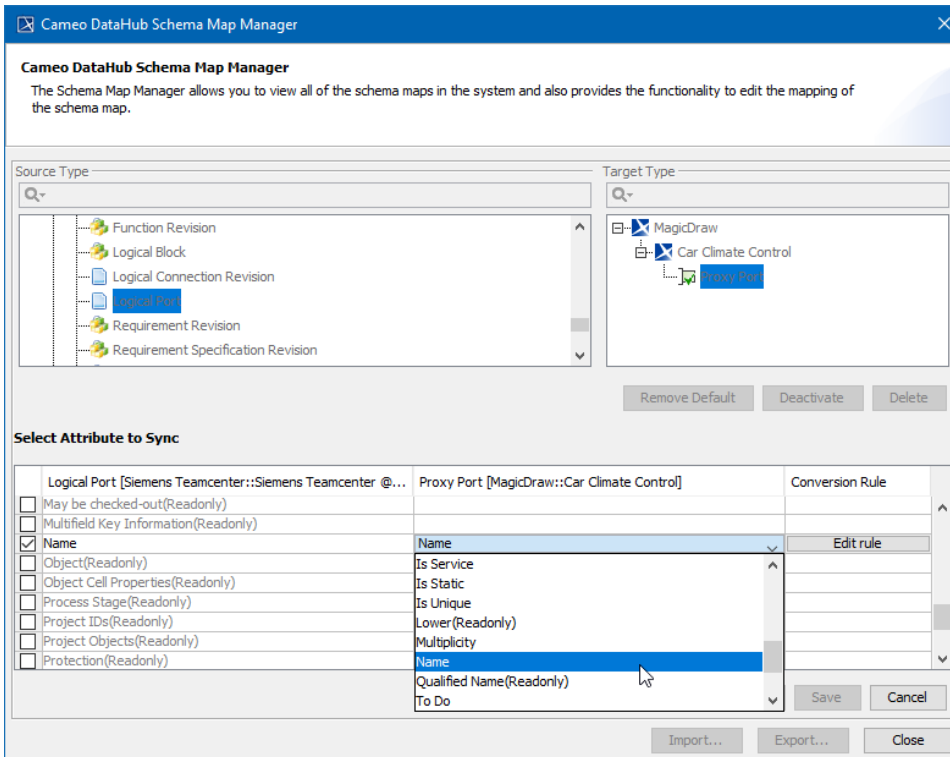


# Mapping element properties

Usually elements and their properties are mapped when [importing](#) them to a modeling tool or [exporting](#) to Teamcenter. However, you can change the mapping schema for the properties of the elements that are already mapped. The mapping schema changes are applied to the whole project scope.

To change the mapping of element properties

1. Start your modeling tool and open the project in which you want to change the mapping of element properties.
2. In the main menu, select **Tools > DataHub > Schema Map Manager**. The **Cameo DataHub Schema Map Manager** dialog opens.
3. In the **Source Type** area of the dialog, select the source element type the properties of which you want to map.
4. In the **Target Type** area, select the target element type the source type is mapped to. The **Select Attribute to Sync** area displays the target element type properties that can be mapped.
5. Click the **Edit** button at the bottom of the dialog.
6. On the left side of the **Select Attribute to Sync** area, find the source type property you want to map.
7. From the drop-down list on the right side of the **Select Attribute to Sync** area, select the target type property you want to map the source type property to.



8. Click the **Save** button.
9. Close the **Cameo DataHub Schema Map Manager** dialog.

## Applying new mapping schema

After changing the mapping of element properties, [synchronize](#) your project again for the new mapping schema to take effect.

### Related pages

- [Importing data](#)
- [Exporting data](#)
- [Default data mapping](#)
- [Customizing or creating data mapping rules](#)