

# Connecting to Teamcenter server

Every time before you start working with Magic Teamcenter Connector, you have to connect to the Teamcenter server as described below.

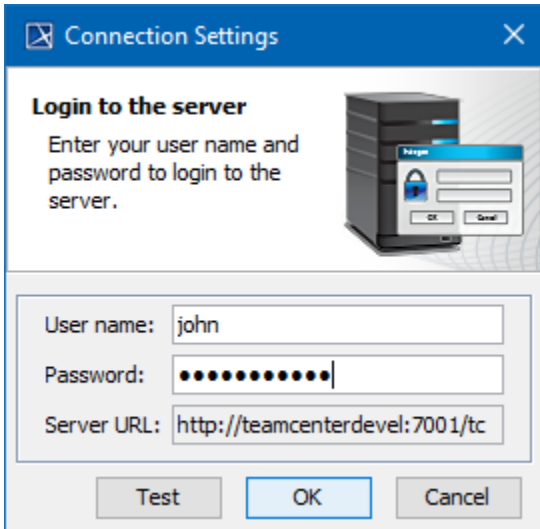


## Connecting for the first time

If you are going to connect to the Teamcenter server for the first time, first [configure the Magic Teamcenter Connector](#) in a modeling tool.

To connect to the Teamcenter server

1. In a modeling tool, create a SysML project or open an existing one.
2. In the main menu, go to **File > Siemens Teamcenter PLM > Show Active Workspace Panel**. The **Connection Settings** dialog opens.



3. Enter your user name and password in the appropriate boxes of the dialog. Use the same user name that you specified when configuring Magic Teamcenter Connector.
4. Click **OK**.

When you log in to the server, the Active Workspace panel opens allowing you to browse the Teamcenter repository, and [import](#) or [export](#) selected items.

## Related pages

- [Importing data](#)
- [Exporting data](#)
- [Data mapping](#)
- [Managing project files](#)