

Installing Web Application Platform on Linux with GUI

On this page

- [Installation for production use](#)
- [Installation for testing purposes](#)
- [Changing Web Application Platform property values](#)

The content of this page is intended for system administrators. Here you can learn how to install and configure Web Application Platform with Cameo Collaborator and Resource Manager plugins used with Teamwork Cloud.



Installation prerequisites and other important information

To install the Web Application Platform with plugins, you need to:

- Have a working instance of [Teamwork Cloud](#).
- If you intend to install the Cameo Collaborator for Teamwork Cloud application, make sure that the [FlexNet license server](#) is installed beforehand.
- Download the `Web_App_Platform_<version number>_unix.sh` file.

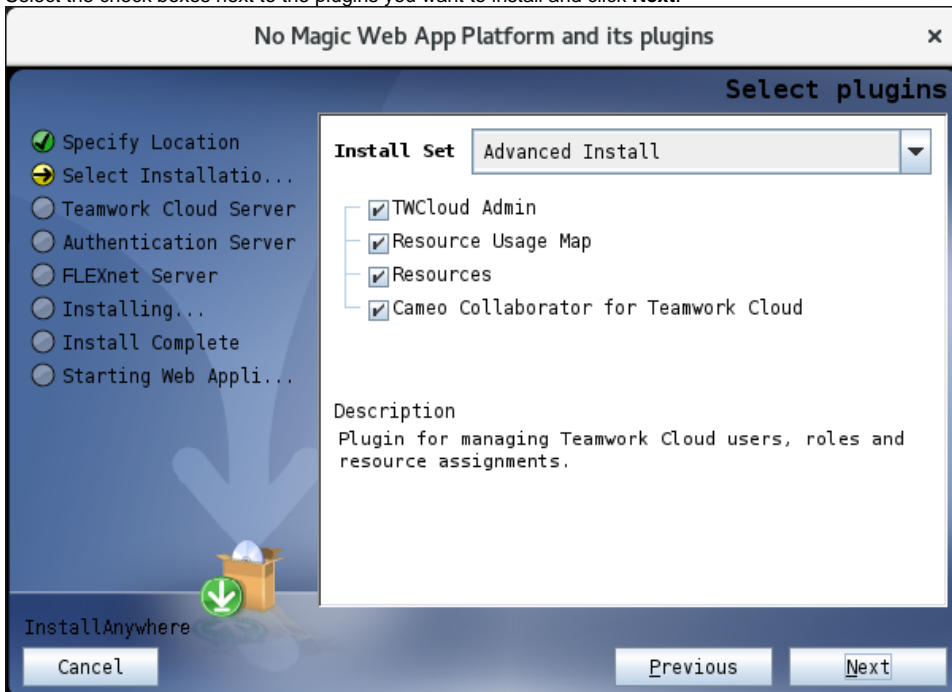
Before starting the installation, you should know the following:

- We recommend installing Web Application Platform and Teamwork Cloud on different machines.
- Before installing Web Application Platform, make sure you know Teamwork Cloud, Authentication server and FLEXnet server data, such as the hostname (or IP address) and port. You will need to enter this data during installation.
- After installing Web Application Platform, it is recommended to disable the web container (e.g., Apache Tomcat) on the machine where Teamwork Cloud is installed.

Installation for production use

To install the Web Application Platform for production use

1. Run the `Web_App_Platform_<version number>_unix.sh` file as administrator to start the installation wizard.
2. Specify the location where you want to install the Web Application Platform in one of the following ways:
 - Use the default location suggested in the **Where would you like to install?** box.
 - Click **Choose** and select a location on your machine.
3. Click **Next**.
4. Select the **Advanced Install** radio button and click **Next**.
5. Select the check boxes next to the plugins you want to install and click **Next**.



**Tip**

Click the plugin name to read its description on the bottom of the installation wizard or the read the plugin documentation listed below:

- [TWCloud Admin](#)
- [Resource Usage Map](#)
- [Resources](#)
- [Cameo Collaborator for Teamwork Cloud](#)

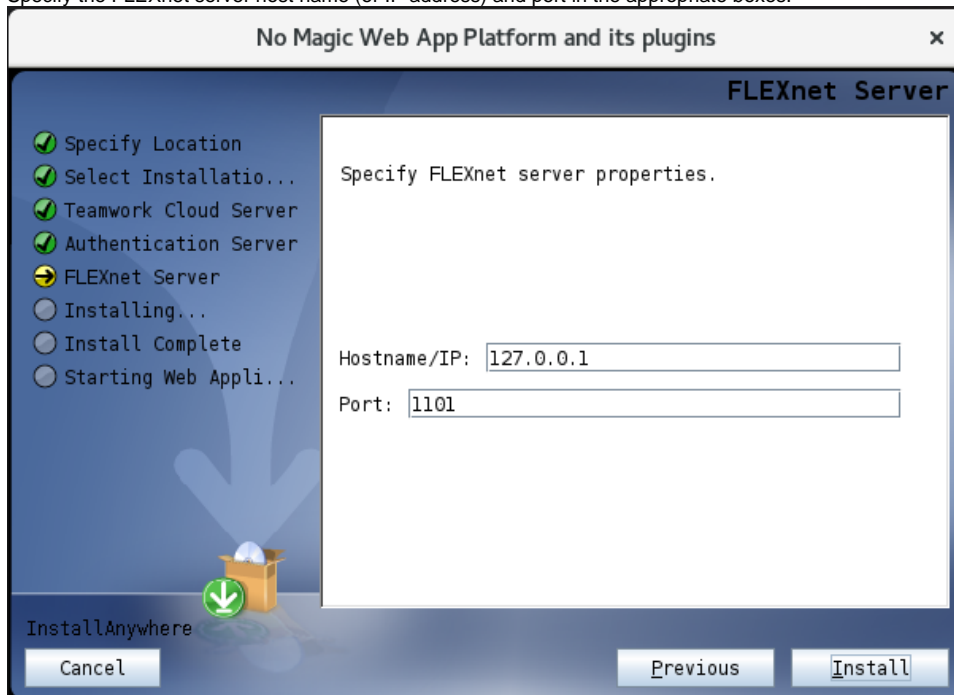
6. Specify the Teamwork Cloud host name (or IP address), rest API port, and client API port in the appropriate boxes.
7. If your Teamwork Cloud instance does not use SSL certificates, clear the **SSL** check box. Otherwise, leave the checkbox selected.

The screenshot shows the 'Teamwork Cloud Server' configuration window. On the left, a list of steps includes 'Specify Location', 'Select Installatio...', 'Teamwork Cloud Server' (highlighted with a yellow arrow), 'Authentication Server', 'FLEXnet Server', 'Installing...', 'Install Complete', and 'Starting Web Appli...'. The main area is titled 'Specify Teamwork Cloud server properties.' and contains three text input fields: 'Hostname/IP:' with the value '127.0.0.1', 'REST port:' with the value '8111', and 'TWC client port:' with the value '3579'. Below these fields is a checked checkbox labeled 'SSL'. At the bottom, there are 'Cancel', 'Previous', and 'Next' buttons. A green arrow icon points down towards the 'Next' button.

8. Click **Next**.
9. Specify the Authentication server host name (or IP address), port, and the password to be used by the authentication client (the **Client secret**) in the appropriate boxes.
10. If your Authentication server instance does not use SSL certificates, clear the **SSL** check box. Otherwise, leave the checkbox selected.

The screenshot shows the 'Authentication Server' configuration window. On the left, the list of steps includes 'Specify Location', 'Select Installatio...', 'Teamwork Cloud Server', 'Authentication Server' (highlighted with a yellow arrow), 'FLEXnet Server', 'Installing...', 'Install Complete', and 'Starting Web Appli...'. The main area is titled 'Specify Authentication server properties.' and contains an important note: 'IMPORTANT: Make sure you update the "authentication.redirect.uri.whitelist" property in the authserver.properties file.' Below this note are three text input fields: 'Hostname/IP:' with the value '127.0.0.1', 'Port:' with the value '8555', and 'Client secret:' with the value 'CHANGE_ME'. Below these fields is a checked checkbox labeled 'SSL'. At the bottom, there are 'Cancel', 'Previous', and 'Next' buttons. A green arrow icon points down towards the 'Next' button.

11. Click **Next**.
12. Specify the FLEXnet server host name (or IP address) and port in the appropriate boxes.



13. Click **Install**.
14. When you get the notification that Web Application Platform is successfully installed, click **Next**.
15. If you do not want to start Web Application Platform after exiting the installation wizard, clear the **Start Web Application Platform as service** checkbox. Otherwise, leave the checkbox selected.
16. Click **Done**.
17. When the installation is finished, update the **authentication.redirect.uri.whitelist** property in the *authserver.properties* file by adding the Web Application Platform address *http(s)://<domain_name>:<port>/webapp* as its value.
18. [Apply the Cameo Collaborator for Teamwork Cloud license](#).

Web Application Platform is now installed with the selected plugins and started if you choose this option in step 15. If you need to start the Web Application Platform manually, click [here](#) to learn how to do it. To access Web Application Platform, open a web browser and go to *http(s)://<domain_name>:<port>/webapp/resources*. By default, the Web Application Platform uses the port 8443.

Installation for testing purposes

If you want to install the Web Application Platform for testing purposes only, you have to install it on the same machine as Teamwork Cloud and Authentication servers. You can do it in two different ways:

- Install Teamwork Cloud. Web Application platform with the Resources, TWCloud Admin, and Cameo Collaborator web apps will be installed together with Teamwork Cloud.



Testing Cameo Collaborator

To check if Cameo Collaborator is installed together with Teamwork Cloud, go to the *<install_root>\WebAppPlatform\webapps\web app* directory. If the *collaborator* folder is in this directory, Cameo Collaborator is installed and you can test it after [applying the Cameo Collaborator license](#).

- Run the *Web_App_Platform_<version number>_unix.sh* file and choose the Quick Install option.

This section explains how to install the Web Application Platform using the executive file (the second option described above). It installs the platform using default property values. You can [change](#) these values later if needed.



Read before starting!

- If you want to install the Web Application Platform only for testing purposes (**Quick Install** option), you have to install it on the same machine where Teamwork Cloud and Authentication servers are installed.
- After installing Web Application Platform, it is recommended to disable the web container (e.g., Apache Tomcat) that was installed together with Teamwork Cloud.

To install the Web Application Platform for testing purposes

1. [Stop Web Application Platform](#) on the machine where Teamwork Cloud is running.
2. Run the `Web_App_Platform_<version number>_unix.sh` file to start the installation wizard.
3. Specify the location where you want to install the Web Application Platform in one of the following ways:
 - Use the default location suggested in the **Where would you like to install?** box.
 - Click **Choose** and select a location on your machine.
4. Click **Next**.
5. Select the **Quick Install** radio button and click **Next**.
6. When you get the notification that Web Application Platform is successfully installed, click **Next**.
7. If you want do not want to start Web Application Platform after exiting the installation wizard, clear the **Start Web Application Platform as service** check box.
8. Click **Done**.
9. When the installation is finished, update the `authentication.redirect.uri.whitelist` property in the `authserver.properties` file by adding the Web Application Platform address `http(s)://<domain_name>:<port>/webapp` as its value.

Web Application Platform is now installed with Cameo Collaborator, Resources and TWCloud Admin plugins. If you need to start the Web Application Platform manually, click [here](#) to learn how to do it. To access Web Application Platform, open a web browser and go to `http(s)://<domain_name>:<port>/webapp/resources`. By default, the Web Application Platform uses the port 8443.

Changing Web Application Platform property values

After installing the Web Application Platform, you can change it's property values in the `webappplatform.properties` file. Click [here](#), to learn more about each property.

To change Web Application Platform property values

1. Go to the `<wap_installation_directory>\apache-tomcat\shared\conf` directory.
2. Open the `webappplatform.properties` file.
3. Change the desired property values.
4. Save and close the file.
5. Restart the Web Application Platform.

Related pages

- [Installing Web Application Platform on Windows](#)
- [Installing Web Application Platform manually](#)

Scripts for upgrading Java and Tomcat in the Linux environment

- **Java:** [upgrade_jdk_webapp.sh](#)
- **Tomcat:** [upgrade_tomcat_webapp.sh](#)