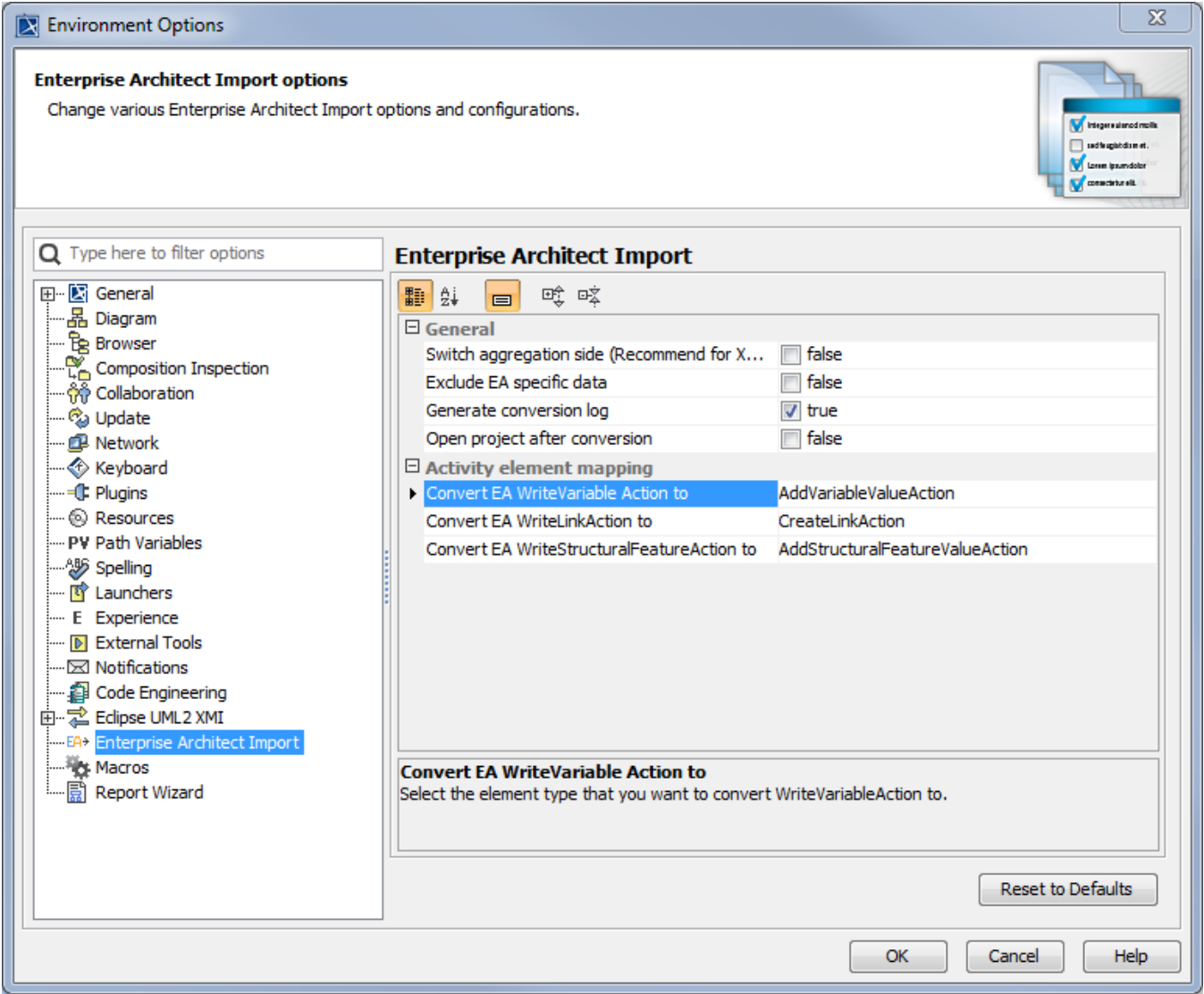


# Conversion options

On this page

- [General](#)
- [Activity element mapping option](#)

In addition to the options that you have in the **Import Enterprise Architect File** dialog, several other conversion options exist in the MagicDraw **Environment Options** dialog.



The EA options in the Environment Options dialog.

The transformation options are classified into two groups: General and Activity element mapping.

## General

The options available in the **General** group are the same as those in the **Import Enterprise Architect Files** dialog.

## Activity element mapping option

The Activity element mapping group provides options to convert the EA elements to other element types. The following table shows the Activity Element Mapping options.

Property name	Function
Convert EA WriteVariableAction to	To convert EA WriteVariableAction to either AddVariableValueAction or RemoveVariableValueAction.

Convert EA WriteLinkAction to	To convert EA WriteLinkAction to either CreateLinkAction or DestroyLinkAction.
Convert EA WriteStructuralFeatureAction to	To convert EA WriteStructuralFeatureAction to either AddStructuralFeatureValueAction or RemoveStructuralFeatureValueAction.

To view the other Enterprise Architect Import options in the **Environment Options** dialog

---

1. Click **Options > Environment** on the MagicDraw main menu to open the **Environment Options** dialog.
2. Select **Enterprise Architect Import** from the tree menu on the left-hand side of the dialog.

#### Related page

- [Conversion options](#)