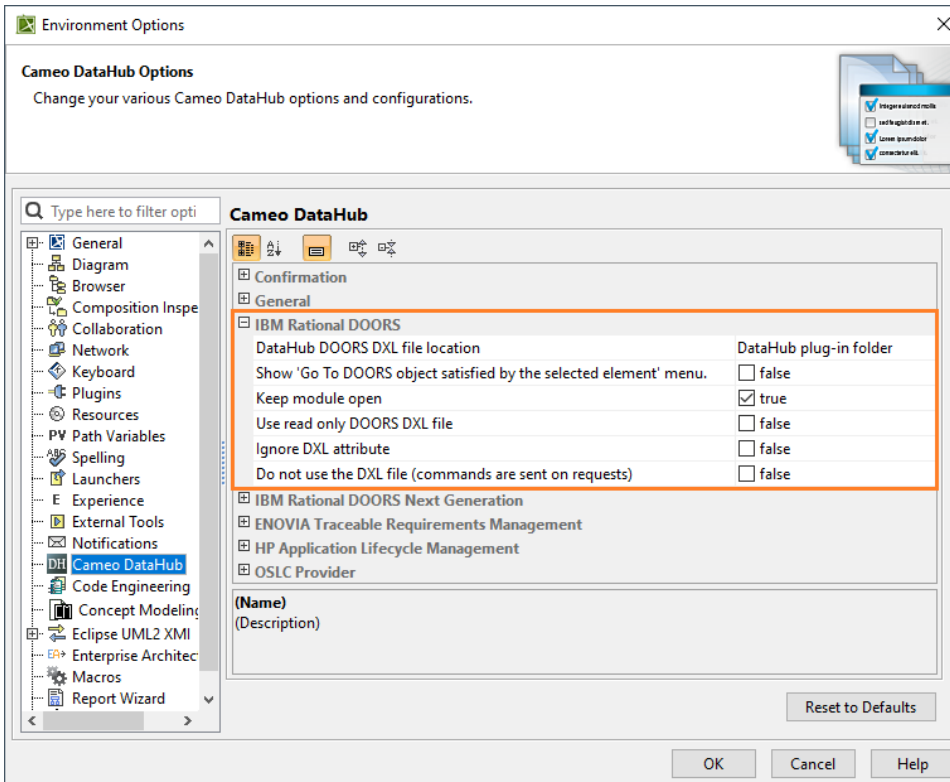


IBM Rational DOORS

This section explains the **IBM Rational DOORS** setting in the **Cameo DataHub Options** dialog.

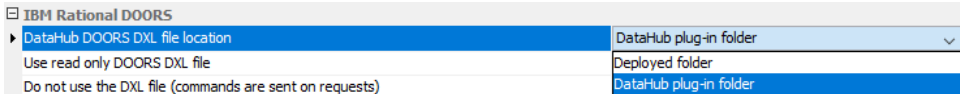
To configure the **IBM Rational DOORS** setting


1. Open the **Cameo DataHub Options** dialog.



2. Go to the **IBM Rational DOORS** group and select any of the options.

The following table explains the **IBM Rational DOORS** options in the **Cameo DataHub Options** dialog.

Option	Function
DataHub DOORS DXL file location	<p>For DOORS integration, DataHub provides options to configure how DXL script is used. There are two options of the DOORS DXL file locations as follows:</p> <ul style="list-style-type: none"> Deployed folder For each DXL request, DataHub will look for a DXL command stored in the DOORS addins folder. The DXL script file will be available after you have completed driver deployment for DOORS. DataHub plug-in folder For each DXL request, DataHub will look for a DXL command stored in the DataHub plugin folder. The DXL script file will be available by default.  <p>Options of the DataHub DOORS DXL file locations.</p>
Show 'Go To DOORS object satisfied by the selected element' menu	<p>If true, enables the Go To DOORS object satisfied by the selected element menu.</p>

Keep module open	If true , leaves the DOORS module open.
Use read only DOORS DXL file	If true , opens the DOORS module in read-only mode.
Ignore DXL attribute	If true , ignores the DXL attributes whose value is populated from the DXL script.
Do not use the DXL file (commands are sent on requests)	<p>If true, sends each DXL request directly to DOORS without using the DXL script file.</p> <div>  Note If the configuration of DXL commands from the script file is restricted with specific security settings that limit the access to the selected folders at DataHub DOORS DXL file location on some machines, you can select the Do not use the DXL file (commands are sent on requests) option to solve this problem. </div>