

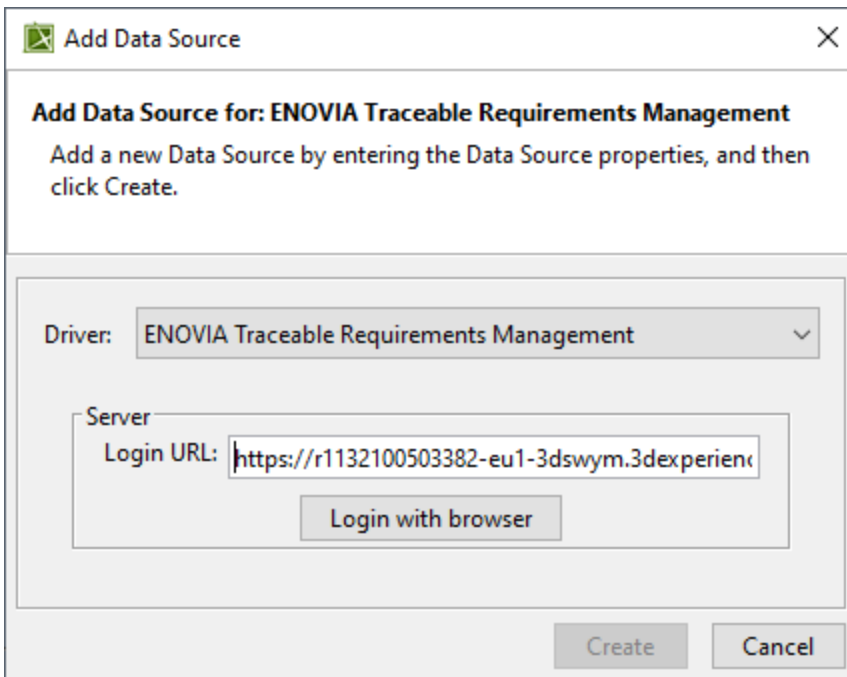
Adding Data Sources for ENOVIA TRM

The latest application supported by Cameo DataHub is ENOVIA Traceable Requirement Management (TRM). TRM is the requirement management tool on the 3DEXPERIENCE platform. All data copy and synchronization features of Cameo DataHub that work with DOORS and CSV files will also be available for TRM Data Sources. In addition, SAML is also supported for passing authorization credentials to the platform.

Furthermore, DataHub enhances the TRM connection by applying the login with the embedded browser in place of the simple login form. Being the new authentication technique, this login method allows connecting to both TRMs that are deployed on Premises and Cloud.

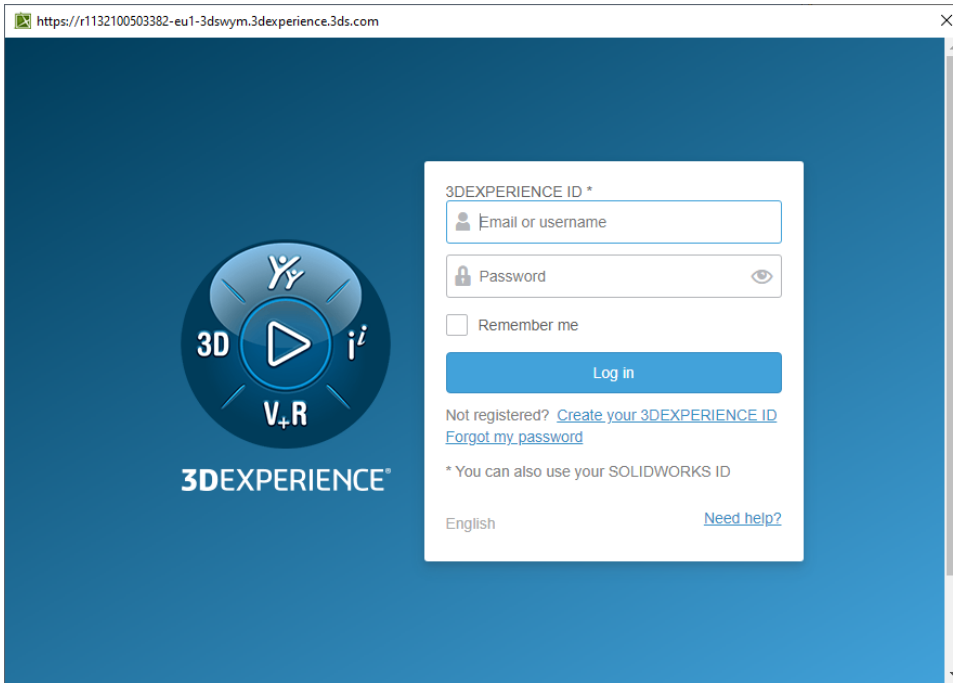
To add an ENOVIA TRM Data Source

1. On the DataHub Explorer tab, click **<Add Data Source>**. The **Add Data Source** dialog opens.
2. From the **Driver** list, choose **ENOVIA Traceable Requirements Management**.
3. Enter the address of the 3DEXPERIENCE/3DSpace (you can copy it from a web browser after you have logged on to the platform) and click **Login with browser**.



The screenshot shows a dialog box titled "Add Data Source" with a close button (X) in the top right corner. Inside the dialog, there is a section titled "Add Data Source for: ENOVIA Traceable Requirements Management" with the instruction "Add a new Data Source by entering the Data Source properties, and then click Create." Below this, there is a "Driver:" dropdown menu with "ENOVIA Traceable Requirements Management" selected. Underneath the dropdown, there is a "Server" section containing a "Login URL:" text box with the value "https://r1132100503382-eu1-3dswym.3dexperien". Below the text box is a button labeled "Login with browser". At the bottom right of the dialog are two buttons: "Create" and "Cancel".

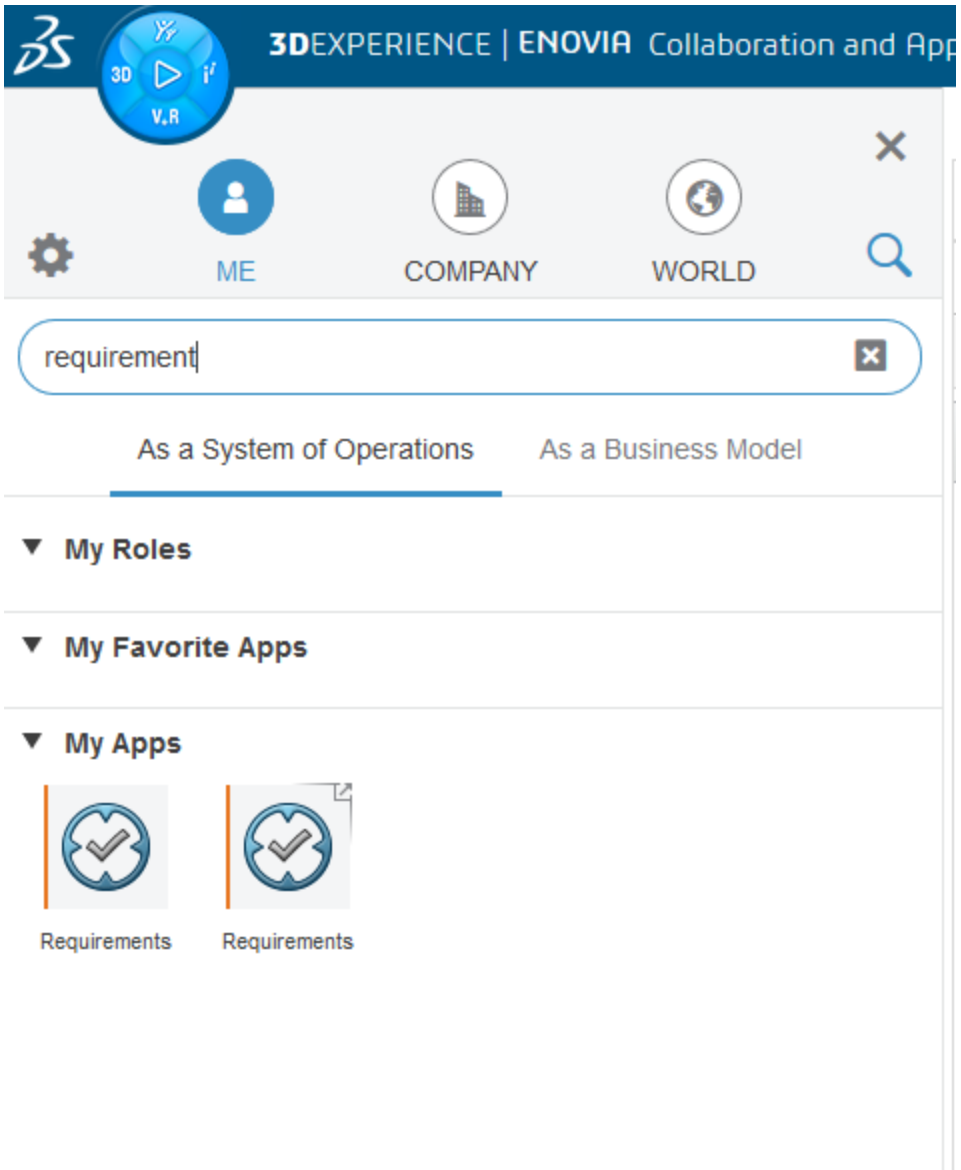
4. The TRM login authentication of the embedded browser appears. Log on through the embedded browser shown in the login page.



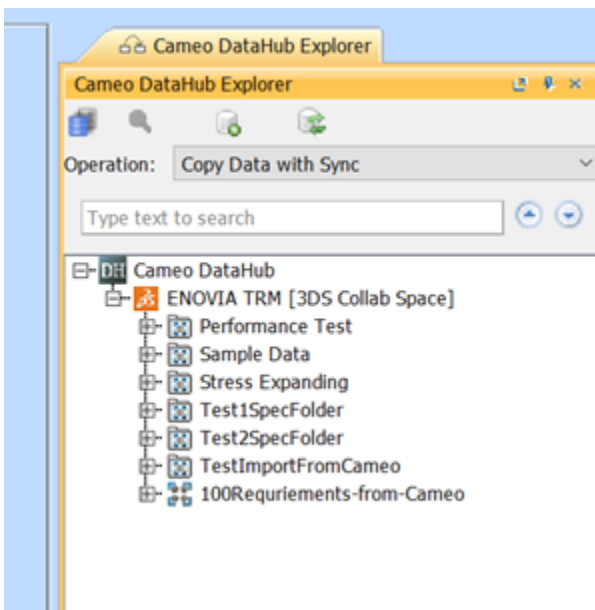
The screenshot shows a web browser window with the address bar displaying `https://r1132100503382-eu1-3dswym.3dexperience.3ds.com`. The page has a dark blue background. On the left, there is a circular logo with '3D' on the left, 'i' on the right, and 'V+R' at the bottom, with a play button icon in the center. Below the logo is the text '3DEXPERIENCE'. On the right, there is a white login form. The form contains the following elements: a label '3DEXPERIENCE ID *', a text input field with a user icon and the placeholder 'Email or username', a password input field with a lock icon and the placeholder 'Password', a checkbox labeled 'Remember me', a blue 'Log in' button, a link 'Not registered? [Create your 3DEXPERIENCE ID](#)', a link '[Forgot my password](#)', a note '* You can also use your SOLIDWORKS ID', the text 'English', and a link '[Need help?](#)'.

 For more information regarding logging in and logging out of 3DEXPERIENCE platform, see [Authentication with 3DEXPERIENCE platform](#).

5. After the login is done, call up the **Requirements** application (ENOVIA Traceable Requirements Management Power View).



- When the **Requirements** application is loaded, the embedded browser will be automatically closed, and DataHub will add the TRM Data Source to DataHub Explorer.

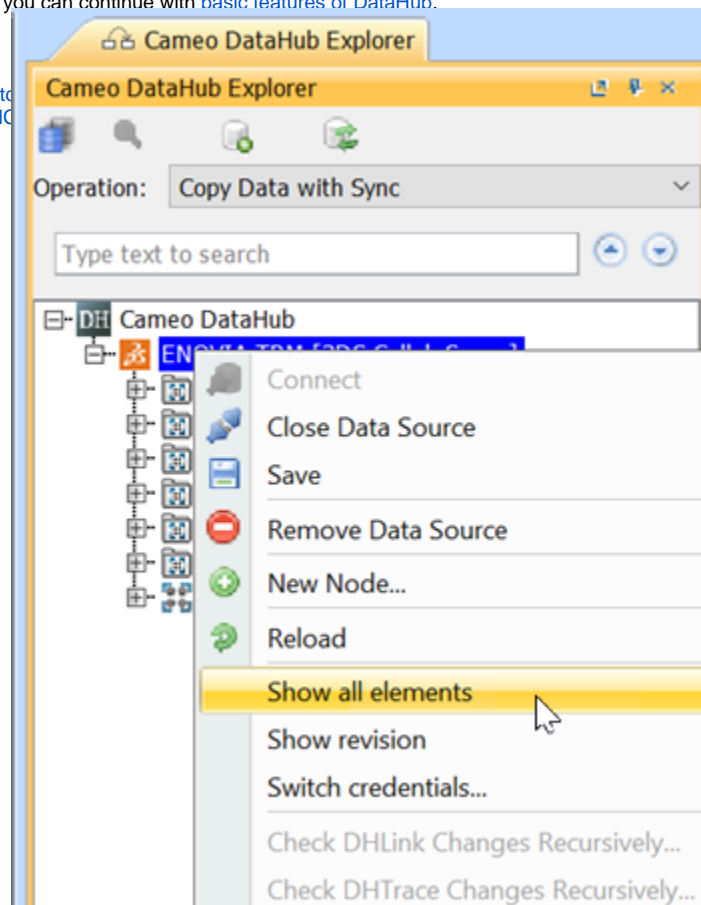


Note
By default, the TRM tree may show only the owned Requirements that you have created. To see the full list of Requirements, right-click the TRM Data Source node and select **Show all elements**.

When the TRM Data Source is connected, you can continue with [basic features of DataHub](#).

Related page

- [Mapping source and target types to](#)
- [Authentication with 3DEXPERIENCE](#)



The Show all elements command for displaying the full list of Requirements.