

Installing TWCloud using the installer file on Windows

The installer file includes both Teamwork Cloud (TWCloud) and Teamwork Cloud Admin (TWCloud Admin) in its installation package. Once the installation completes, you will have both TWCloud and TWCloud Admin installed on your machine.

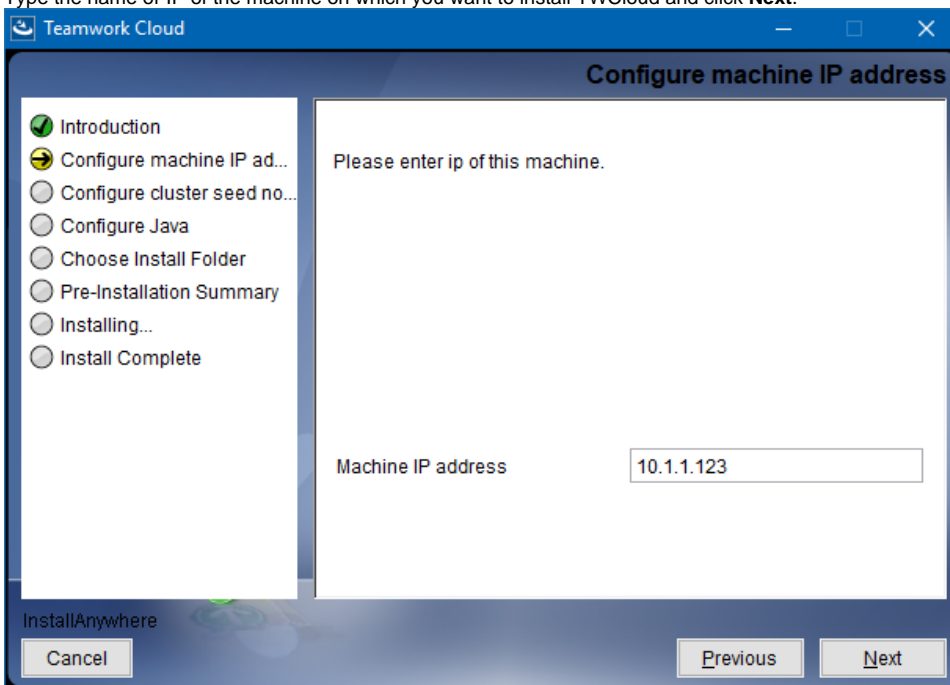


Warning

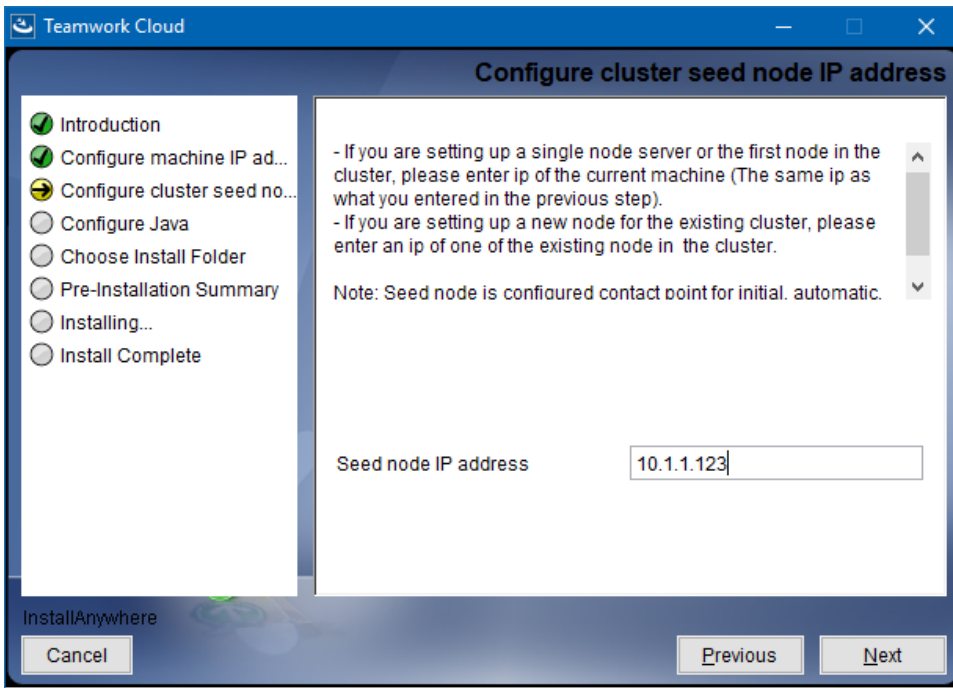
If the installation path contains any of the following characters, like '[', ']', '(', ')', '!', '@', '#', '\$', '%', '&', '}', '+', '=', or ';' the installation procedure cannot be completed successfully and the login page will not load. If, for example, the installation path is `\\TeamworkCloud`, which does not contain any of the special characters, the installation will not fail.

To install TWCloud by using the installer file on Windows

1. Download the `twcloud_<version_number>_installer_win64.exe` file.
2. Right click on the downloaded installer and **Run as administrator**. The **Introduction** section will open. Click **Next**.
3. Type the name or IP of the machine on which you want to install TWCloud and click **Next**.

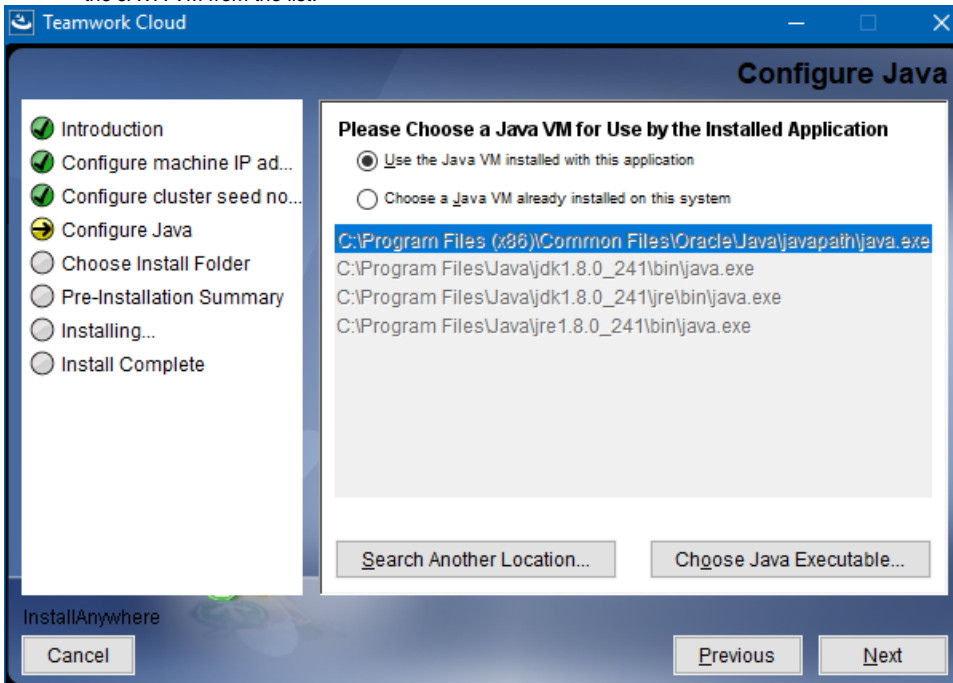


4. Enter the node IP. If your machine is a single node server or the first node in the cluster, enter the IP of your machine.

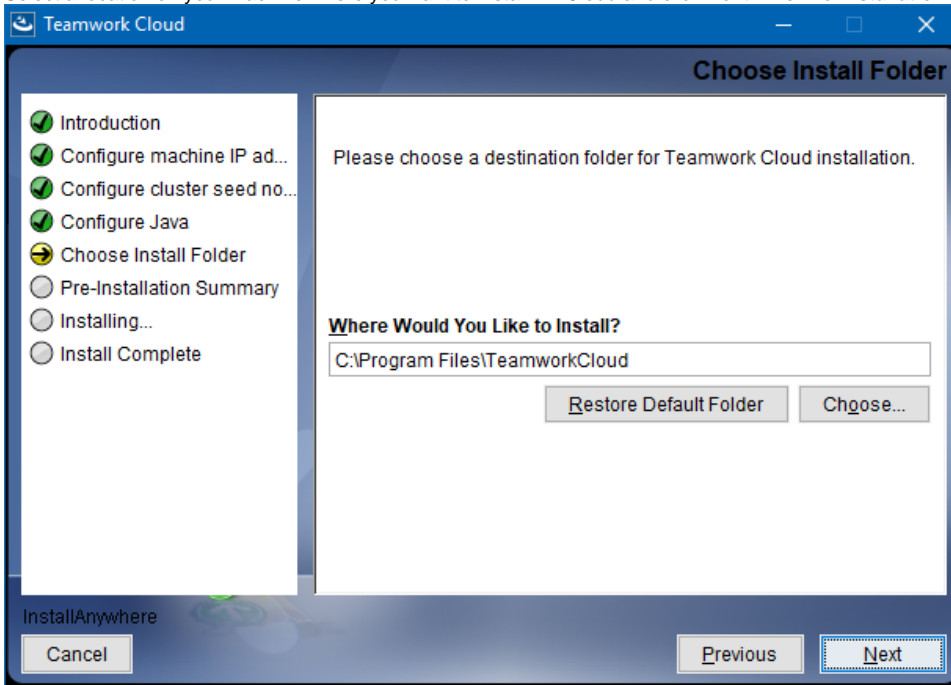


5. You will be allowed to select a Java VM. Do one of the following and click **Next**.

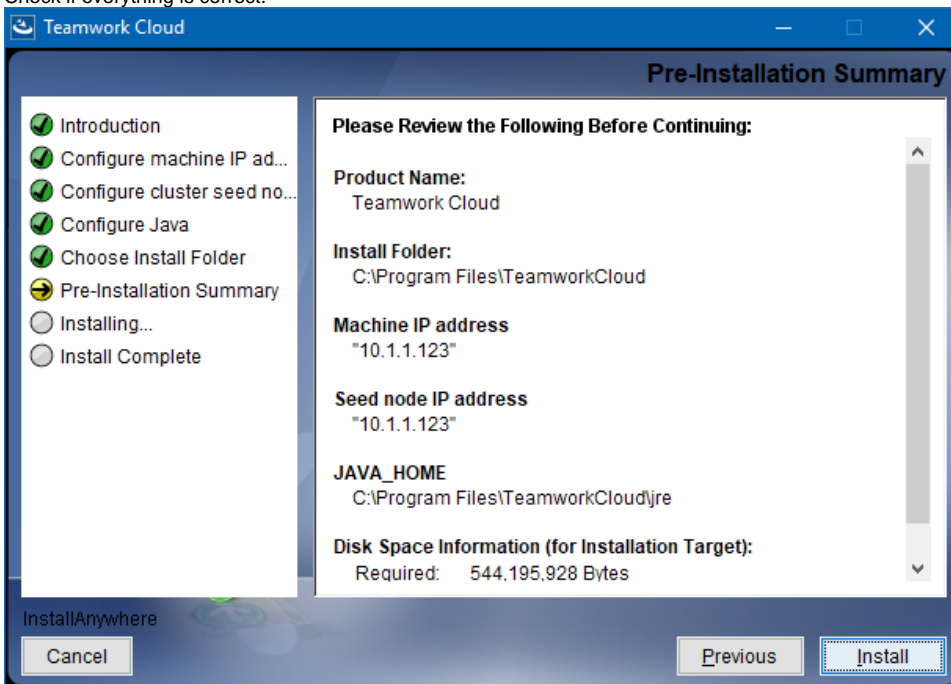
- If you want to use the Java VM provided by Teamwork Cloud, select **Use the Java VM installed with this application** (by default).
- If you have already had a JAVA VM installed on your machine, select **Choose a Java VM already installed on this system** and choose the JAVA VM from the list.



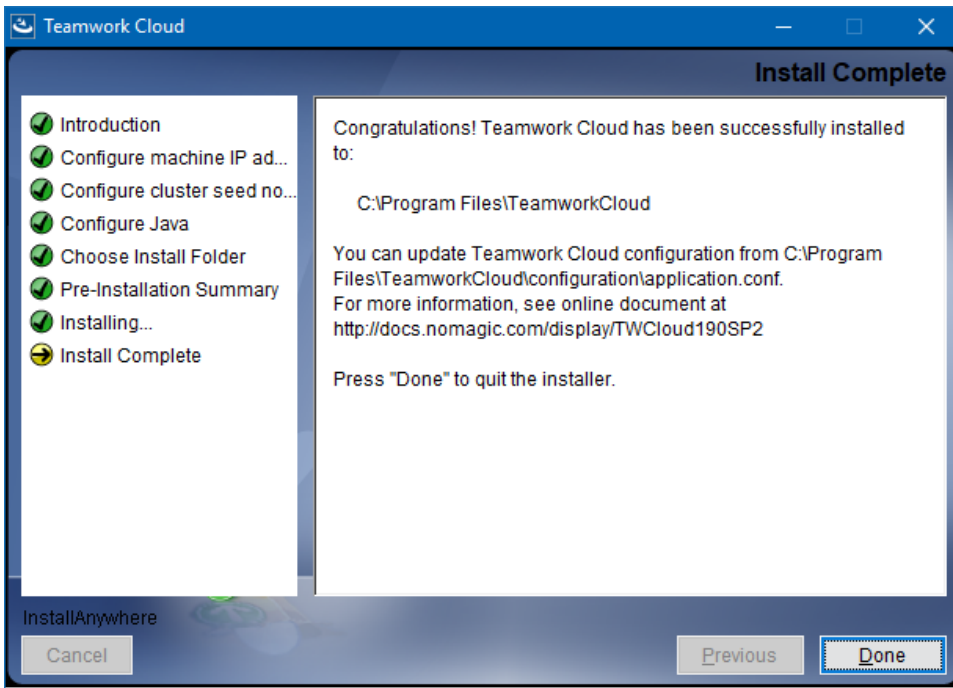
6. Select a location on your machine where you want to install TWCloud and click **Next**. The **Pre-Installation Summary** section will open.



7. Check if everything is correct.



8. Click **Install**. The installer will install TWCloud on your machine.
9. Upon successful installation, click **Done** to close the installation window.



10. Open the Task Manager and start the following services:

- Authserver service
- Teamwork Cloud service
- WebApp service

11. Check if the system is working. You should be able to access Teamwork Cloud via <https://FQDN:8443/webapp/>.

Post-Install Configuration



The installer has now created the preliminary configuration. If your system is still not operational and you cannot use Teamwork Cloud, check the configuration parameters as described below.

1. Edit the configuration file: `C:\Program Files\TeamworkCloud\configuration\application.conf`. Search for **seeds =**, located under the section for the persistence Cassandra section, and replace: **localhost** with: **ip_address_of_cassandra_node**. Search for **url =**, located in the **esi.auth** section. Enter the IP address or FQDN (if accessing via FQDN) of your server.
2. If you are accessing Teamwork Cloud Admin via its FQDN, edit the configuration file: `C:\Program Files\TeamworkCloud\AuthServer\config\authserver.properties`. Search for **server.public.host** and replace the IP address with the FQDN. Search for **authentication.redirect.uri.whitelist**, and append the following to the entry, <https://FQDN:8443/webapp/>.
3. Edit the configuration file for TWCloud Admin: `\TeamworkCloud\WebAppPlatform\shared\conf\webappplatform.properties`.
 - **twc.admin.username** - Set it to the username of a local account with Administrator privileges (default is Administrator).
 - **twc.admin.password** - Set it to the password corresponding to the Administrator user (default is Administrator).
 - If you changed the **pswd** field in `C:\Program Files\TeamworkCloud\configuration\application.conf` from the default, you must modify this file accordingly. Search for **authentication.client.secret** and replace the **CHANGE_ME** value with the same value as that in **application.conf**.
4. Please create a an entry in `C:\Windows\System32\drivers\etc\hosts` containing the local IP address and the FQDN of your machine, if accessing via FQDN. For example, if your IP address is 10.1.1.123 and your FQDN is *mymachine.mydomain.local*, it would be in the form:

```
10.1.1.123      mymachine.mydomain.local
```

5. Open an administrative command prompt and issue the following commands in order to create service dependencies:

```
sc config authserver depend= teamworkcloud
sc config webapp depend= teamworkcloud
```

What's next?

[Starting TWCloud on Windows](#)