

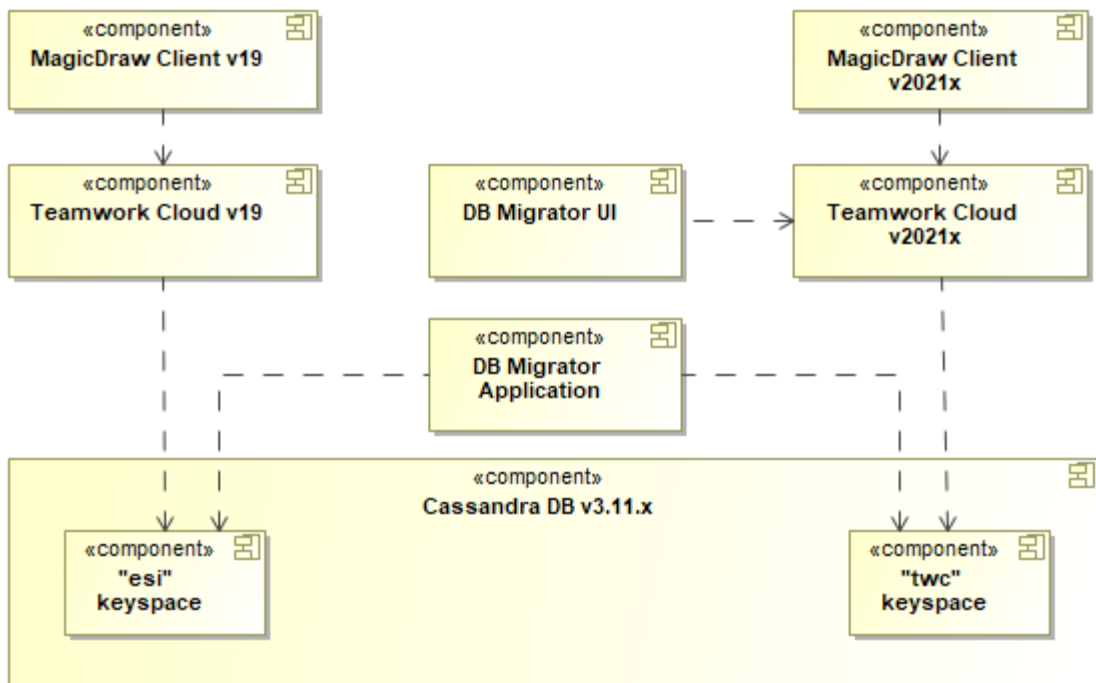
Migrating database

After upgrading Magic Collaboration Studio to a new version, you have to migrate its database as well. The database migration tools support incremental migration, which means that selected resources are migrated version by version. During migration, new resources and partially migrated resources are still accessible in the source database, therefore users can work with them avoiding downtime. To learn more about different approaches you can use to migrate the database, see [Migration strategies](#).

For database migration, two migration tools are used:

- **The command-line migration tool** (to be deployed on the source database server). Upon initial launch, this tool creates a new database schema and migrates all non-model data (users, roles, etc.).
- **The UI migration tool** (to be deployed on any machine with GUI support). The UI migration tool provides visual migration control and is used to migrate all resources.

The following figure illustrates how these migration tools work.



This schema displays how database migration tools work.



Important

- It is highly recommended not to work with the upgraded version of Magic Collaboration Studio before initial database migration, except for setting up a license with the default Administrator user.



Migration prerequisites

To migrate the database

1. On the source database server, download and extract the `migrationtool_<version_number>_no_install.zip`.
2. Run the `migrationtool_<version_number>_no_install/MigrationTool/migrator` for Linux (if you are working on Windows, run the `migrationtool_<version_number>_no_install/MigrationTool/migrator.bat` file).



Command-line migration tool

- Before starting this wizard, you must create a user with the following permissions in the Target Work Cloud key space and migrates all non-model data (users, roles, etc.). If non-model data is changed in the source database between different resource migration iterations. e.g., new users are created or new roles are assigned, these changes are migrated to the target database after each resource migration. If non-model data is manually
3. Download and extract migrationtool <version_number> ui-win.zip or ui-linux.zip (For Windows, run the migrationtool <version_number> ui-win.zip)
 4. Run the migrationtool <version_number> ui-linux/migrationtool ui/migrator for Linux (For Windows, run the migrationtool <version_number> ui-win/migrationtool ui/migrator.bat file)
- The source database version must be 19.0 SP3 or 19.0 SP4.

You can also run the files from your desktop machine which has access to Magic Collaboration Studio.

- For more information, see [Migrating data to version 19.0 SP3](#) or [Migrating data to version 19.0 SP4](#).
5. When the resource migration wizard opens, enter the user name, password, and server name of the target version of Magic Collaboration Studio and the Configure Server permission is required for migration.

To migrate the database, you need to have the Configure Server permission or the Server Administrator role in the target version of Magic Collaboration Studio.

- The Magic Collaboration Studio 2021x license must be applied before migrating.

If a license is not applied, the migrator cannot establish a connection with Magic Collaboration Studio.

1. Login to TWC 2021x

2. Migrate Resources

User name:

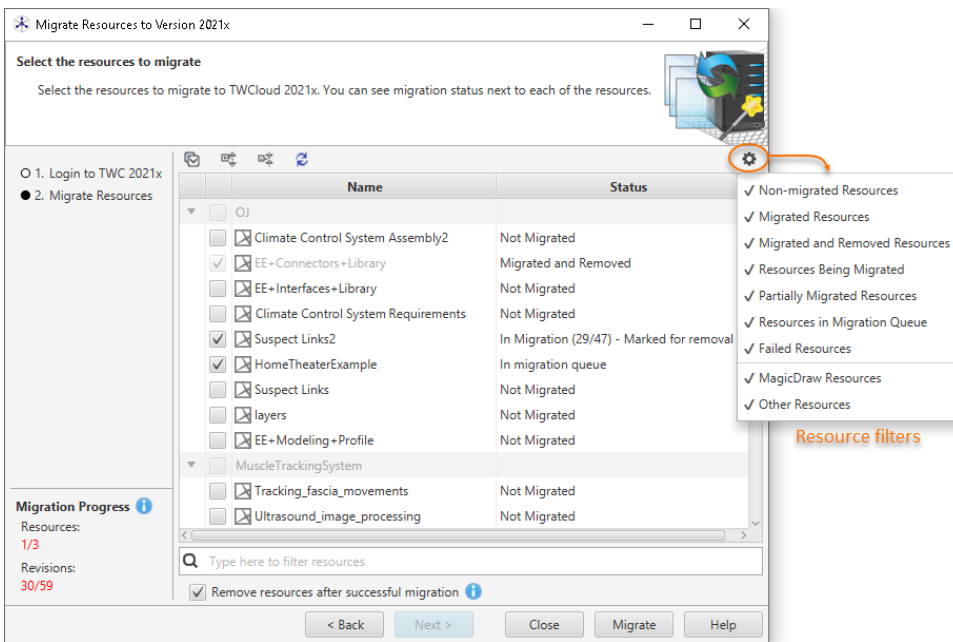
Password:

Server name:

☒ Use secured Connection (SSL)

< Back Next > Close Migrate Help

6. Select the resources you want to migrate.



Migration statuses

On the left side of the resource migration wizard, you can see the migration status of each resource. Migration statuses can be the following:

7. Do one of the following:
 - **Not Migrated** - the resource has never been selected for migration.
 - **Clear the Remove resources after successful migration check-box** to migrate all versions of the selected resources to the target database, but leave them available in the source database as well. All new resource versions created in the source database after migration can be migrated during the next iteration.
- Important**
If you choose the migration option where the **Remove resources after successful migration** check-box is not selected, the migrated resources will not be visible in the target database. However, users will be able to continue working with them in the source database.
8. Click the **Migrate** button.
 9. Once the resources are migrated, close the resource migration wizard.
 10. If you chose the incremental migration approach (see [Migration strategies](#)), repeat steps 3 to 8 for every following migration iteration.
 - **In migration queue** - the resource is marked for migration and is waiting in the migration queue.
 - **Failed** - resource migration failed. You can look for the reason of the failure in the migration tool log files. The migration of failed resources is re-attempted during the next migration iteration.

To filter resources by their status or type, click  as shown in the figure above.