

# Offline modeling

The Teamwork Cloud server supports offline modeling by allowing you to:

- Work with the project (read/edit) when a connection to the server is not available.
- Save intermediate changes locally (privately), and commit changes to the server when required.
- Save time by saving changes locally, which is much faster than committing directly to the server.

In an offline project, you can:

- Edit elements locked by a current user.
- Edit element symbols of elements locked by a current user.
- Create new elements/diagrams in the model.
- Review a project structure (used projects), project options, and styles.
- Save changes locally.
- Use a local project (if permissions allow).

When a connection is established, you can commit and/or update project changes, and lock or unlock project elements.

You should save the online project locally to make it an offline project.

To save an online project locally

1. Open a server project.
2. From the main menu, select one of the following:
  - **Collaborate > Saves Changes Locally / Make available offline.**
  - **File > Save Project.**



## Not a local copy of a server project

This is **not** a local copy of a server project! All user locks and changes are saved within the project, so the offline project can be committed to the server later.



## Offline project location

Offline projects are saved in the restricted folder of the user home directory, e.g. `<disk_name>\Users\<user_name>\AppData\Local\`.

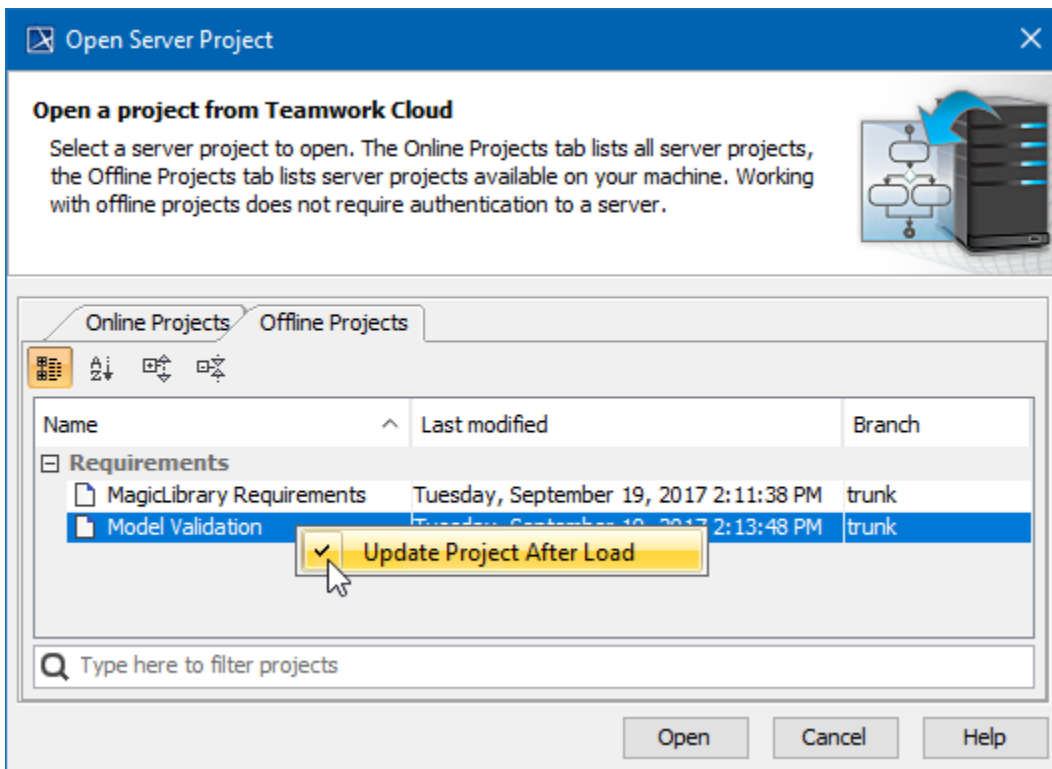
`<modeling_tool_name>\<modeling_tool_version>\restricted`. These projects are saved as multiple files in different folders, unlike the regular .mdzip files.

You can only open offline projects through the modeling tool.

To open an offline project

1. From the **Collaborate** menu, select either **Open Server Project** (or press Ctrl+Shift+O), or **Projects**.
2. In the open dialog, click the **Offline Projects** tab and select the offline project to open.

You can open the project as it is saved locally (without checking for the latest updates) or open the project and update it automatically from the server, if a connection is available. To include updates, right-click the selected project and select **Update Project After Load** for each project you want to update when loading.



**The selection to update is persistent**  
 Keep in mind that if you select to update the project after loading it is persistent and remains selected after reloading the project.

In the title bar, you can see information about a project opened from TWCloud. This information allows you to distinguish Online from Offline projects:

#### Related pages

If you open the Online project, the title bar will show:

- [Committing changes to Teamwork Cloud](#)
- [Locking model for edit](#)
- [Unlocking model](#)
- [Modeling tool name and version,](#)
  - Project name,
  - Project trunk or branch,
  - Project version,
  - Server name.

**MagicDraw 19.0 - Alarm system/trunk #1 [10.2.2.47:3579]**

If you open the Offline project, the title bar will show:

- Project name,
- Project trunk or branch,
- Project version,
- Server name,
- Last user who saved the project,
- Available Offline.

**MagicDraw 19.0 - Alarm system #1 [10.2.2.47:3579, Saved by User: Administrator] Available Offline**