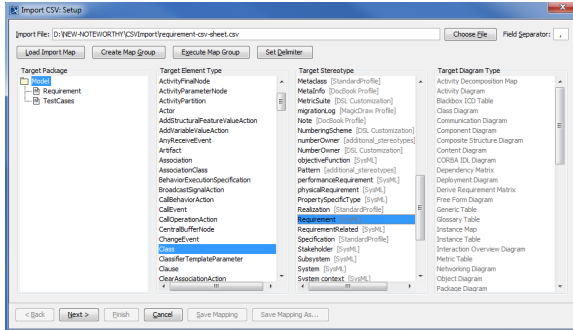


Importing requirements

Now that we have our packages – Requirement and TestCases, we can add some requirements to the container package just created.

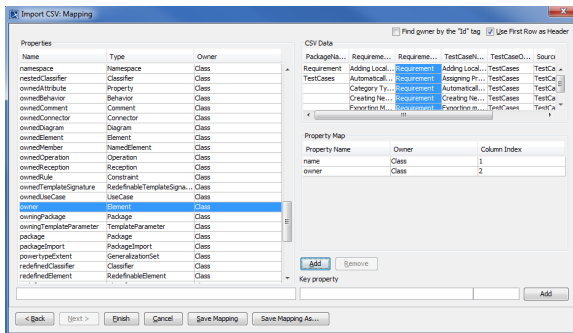
To import requirements

1. Click **File > Import From > Import CSV** to start the wizard interface, see figure below.



2. Click **Choose File** to browse and select your CSV file.
3. Select the target package **Requirement**.
4. Select a target element type of **Class** and a stereotype of **Requirement**.

5. Click **Next >**. The **Import CSV: Mapping** dialog will open, see figure below.



6. Map the **RequirementName** column from the CSV file and name from the **Properties** list.
7. Keep the name property from the **Properties** list selected, and also keep the **RequirementName** column from CSV data source selected, then click the **Add** button beside the Key Property textboxes. The **Key Property** textboxes should populate as shown in figure above.
8. Map **RequirementOwner** from the CSV file and owner from the **key property** list.
9. Select name as the **key property** from the **Key property** drop-down.

Finish

10. Click . Your MagicDraw **Containment tree** should show the imported requirements as shown in figure below.

