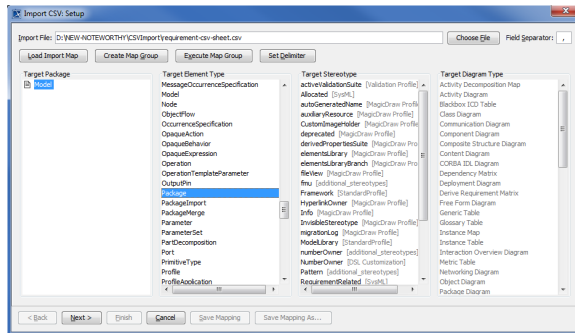


Importing a package

Before importing the requirements, first we must create a holder package to serve as the requirements container.

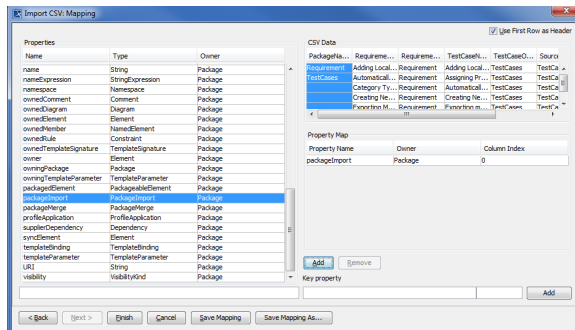
To import a package

1. Create a new blank SysML project in MagicDraw from **File > New Project**, and then choose SysML Project from the Systems Engineering group.
2. Name your project and select the location to save it, and then click **OK**.



3. Click **File > Import From > Import CSV** to open the wizard interface, see figure below.

4. Click **Choose File** to browse and select your CSV file.
5. Select a **Target Package** from the **Target Package** column.
6. Select a **Target Element Type** **Package**.



7. Click **Next >**. The **Import CSV: Setup** dialog will open, see figure below.
8. Select **packageName** from the CSV file and select name from the **Properties** list, and then click **Add** to map them, see figure above.
9. Keep the **name** property from the **Properties** list selected, and also keep the **packageName**

column from CSV data source selected, then click the **Add** button beside the **Key Property** textboxes. The **Key Property** textboxes should populate as shown in figure above.

10. Click **Finish**. You can see the imported packages are shown in the MagicDraw **Containment tree**, see figure below.

