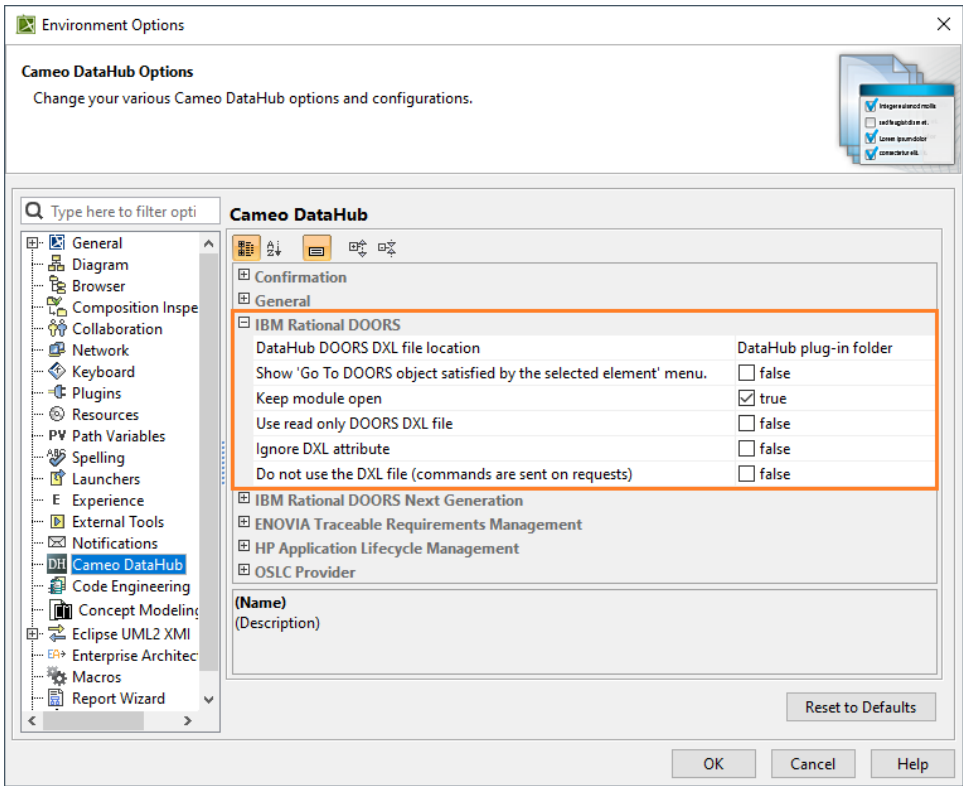


# IBM Rational DOORS

This section explains the **IBM Rational DOORS** setting in the **Cameo DataHub Options** dialog.

To configure the **IBM Rational DOORS** setting


1. Open the **Cameo DataHub Options** dialog.



2. Go to the **IBM Rational DOORS** group and select any of the options.

The following table explains the **IBM Rational DOORS** options in the **Cameo DataHub Options** dialog.

Option	Function
<b>DataHub DOORS DXL file location</b>	<p>For DOORS integration, DataHub provides options to configure how DXL script is used. There are two options of the DOORS DXL file locations as follows:</p> <ul style="list-style-type: none"><li>• <b>Deployed folder</b> For each DXL request, DataHub will look for a DXL command stored in the DOORS <b>addins</b> folder. The DXL script file will be available after you have completed <a href="#">driver deployment</a> for DOORS.</li><li>• <b>DataHub plug-in folder</b> For each DXL request, DataHub will look for a DXL command stored in the DataHub <b>plugin</b> folder. The DXL script file will be available by default.</li></ul> <div>This is a screenshot of the 'IBM Rational DOORS' group in the 'Cameo DataHub Options' dialog. The 'DataHub DOORS DXL file location' option is selected, and its dropdown menu is open, showing three choices: 'DataHub plug-in folder' (selected), 'Deployed folder', and 'DataHub plug-in folder'.</div> <p>Options of the DataHub DOORS DXL file locations.</p>
<b>Show 'Go To DOORS object satisfied by the selected element' menu</b>	If true, enables the <b>Go To DOORS object satisfied by the selected element</b> menu.

<b>Keep module open</b>	If <b>true</b> , leaves the DOORS module open.
<b>Use read only DOORS DXL file</b>	If <b>true</b> , opens the DOORS module in read-only mode.
<b>Ignore DXL attribute</b>	If <b>true</b> , ignores the DXL attributes whose value is populated from the DXL script.
<b>Do not use the DXL file (commands are sent on requests)</b>	<p>If <b>true</b>, sends each DXL request directly to DOORS without using the DXL script file.</p> <div>  <b>Note</b>            If the configuration of DXL commands from the script file is restricted with specific security settings that limit the access to the selected folders at <b>DataHub DOORS DXL file location</b> on some machines, you can select the <b>Do not use the DXL file (commands are sent on requests)</b> option to solve this problem.         </div>