

Driver deployment

DataHub supports driver deployment for the DOORS client. This enables the DOORS application to activate its DataHub menu items and also allows DataHub to create DOORS Data Sources.

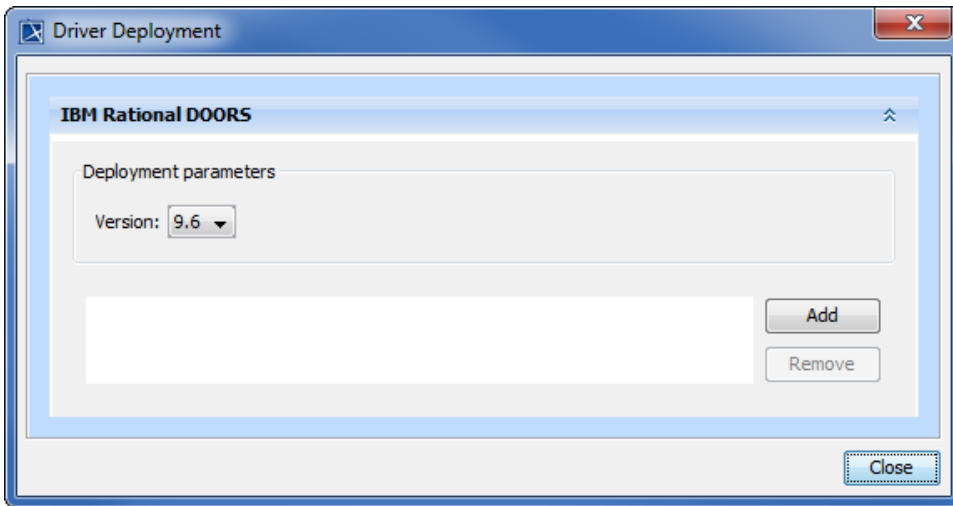



Note

- Driver deployment copies the DXL script file into the DOORS **addin** folder and updates the registry for DOORS to recognize the **addin** path. Therefore, you must run MagicDraw or Cameo products as an administrator to allow these operations during driver deployment.
- You must close the DOORS application before driver deployment since folders are write-protected when the application is active.

To deploy the DOORS driver in DataHub

1. From the MagicDraw® main menu, click **Tools > Datahub > Driver Deployment**. The **Driver Deployment** dialog appears.



2. Select the DOORS version you would like to add and then click .
3. A browse dialog opens. You must navigate to the DOORS installation directory to load the driver.