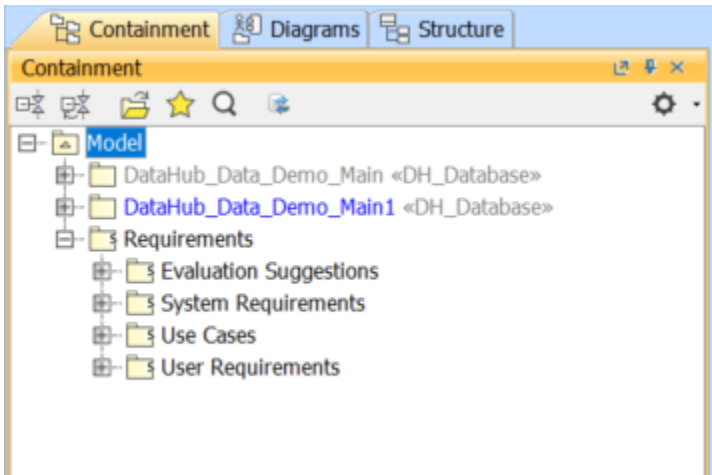


# Splitting part of a synchronized model as a used project

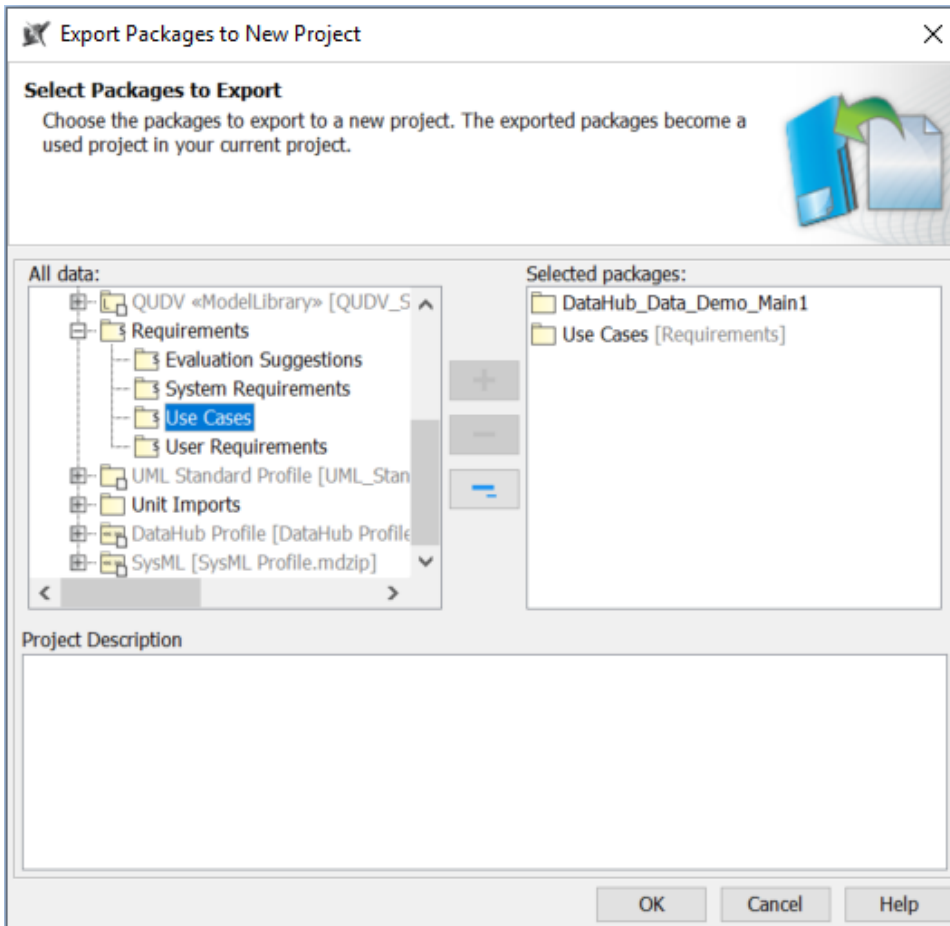
When the synchronized data are quite large, and you want to cut part of them into another separate project, you can export both model data and DataHub database that include the synchronization information to the new project.

To split part of a synchronized model as a used project

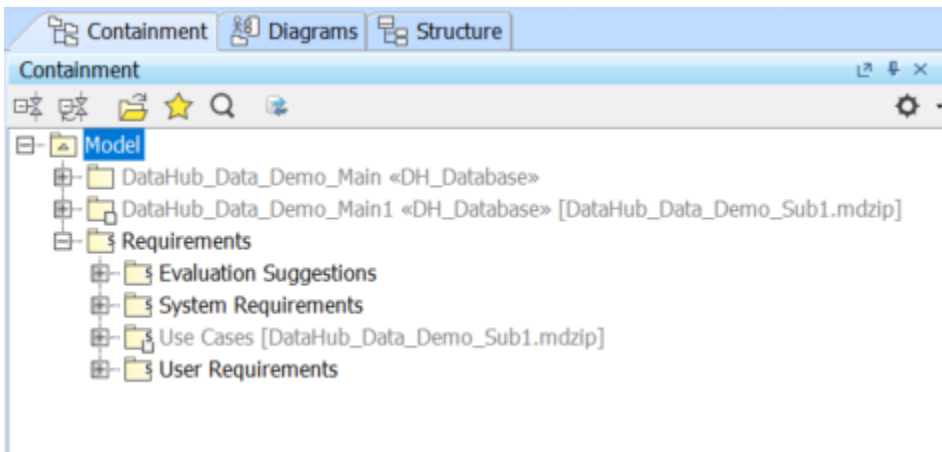
1. Select the **DataHub\_Data\_<project>** element. Copy and paste it into the same location under the **Model** element in the Containment tree. You will get **DataHub\_Data\_<project>1**.



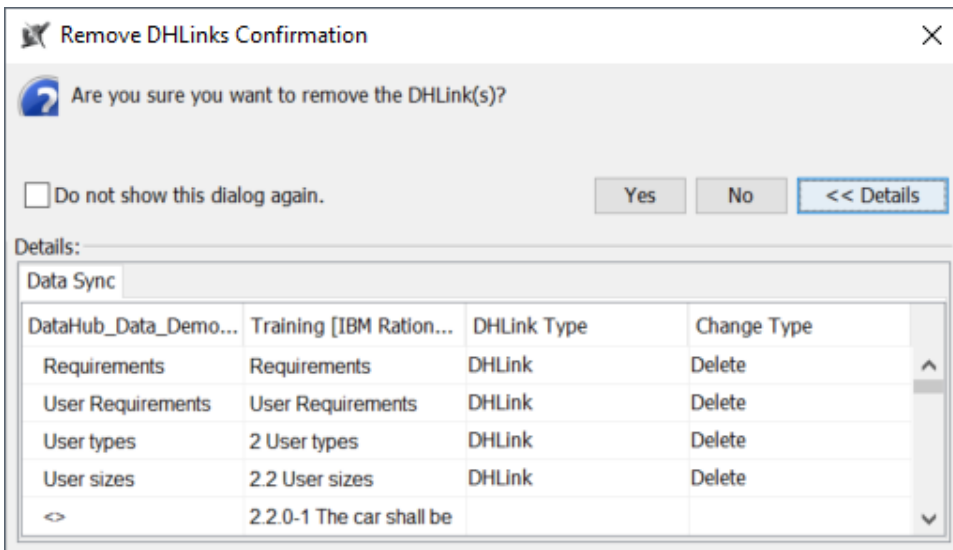
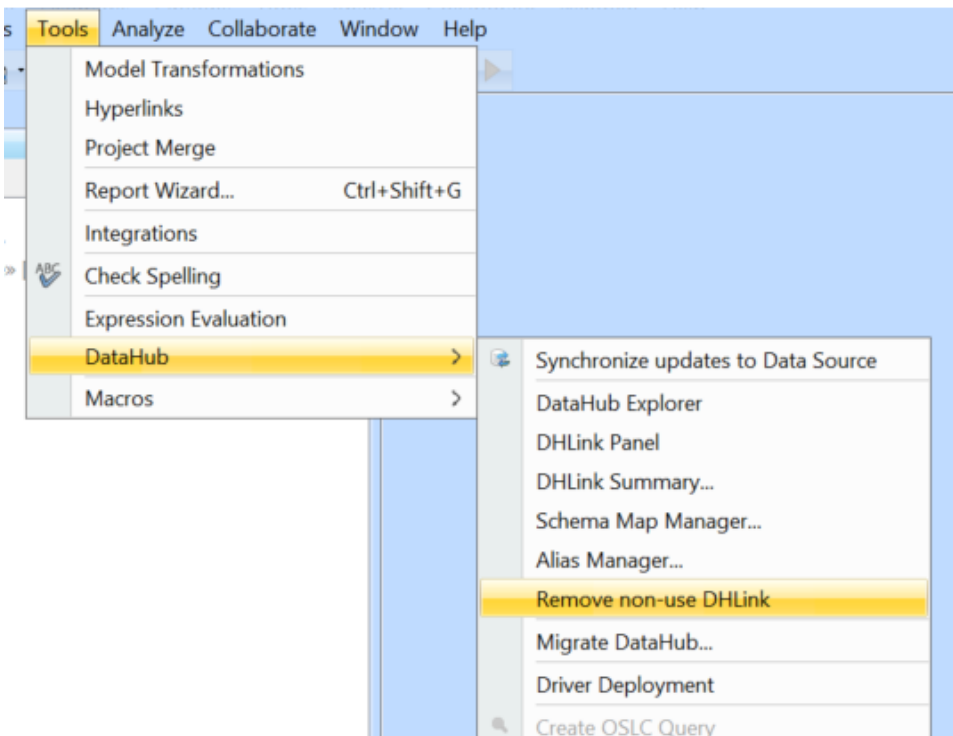
2. On the main menu, click **File > Export To > Project Usage**. The **Export Packages to New Project dialog** appears. Select the Package you want to export and choose **DataHub\_Data\_<project>1**.



3. Type a new project file name and click **Save**. You will see the selected data are saved to the new project file.



4. On the main menu, click **Tools > DataHub > Remove non-use DHLINK**. The confirmation dialog appears. Select **Yes**.



The DHLinks for the elements that were exported to the used project will be removed from DataHub\_Data of the main project.



#### Note

- When you export the used project, the full DataHub\_Data will be copied.
- Since the **Remove non-use DHLink** operation affects only the main project, you need to run this operation with the used project too. To remove the non-use DHLinks (the links that belong to the main project) from the used project, you must open the used project and select the **Remove non-use DHLink** command.