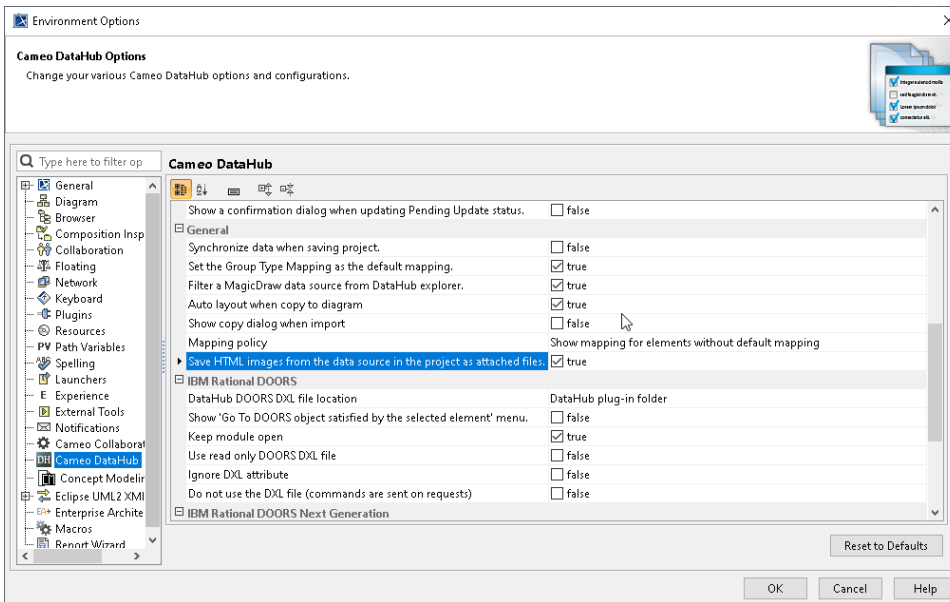


# HTML images, RTF, and OLE support

Cameo DataHub supports HTML image tags as attached files, text style in rich-text files (RTF), and image and other objects (such as Embedded Excel spreadsheet and Words files) in object linking and embedding (OLE).

To enable HTML image support from a data source in a project as an attached file

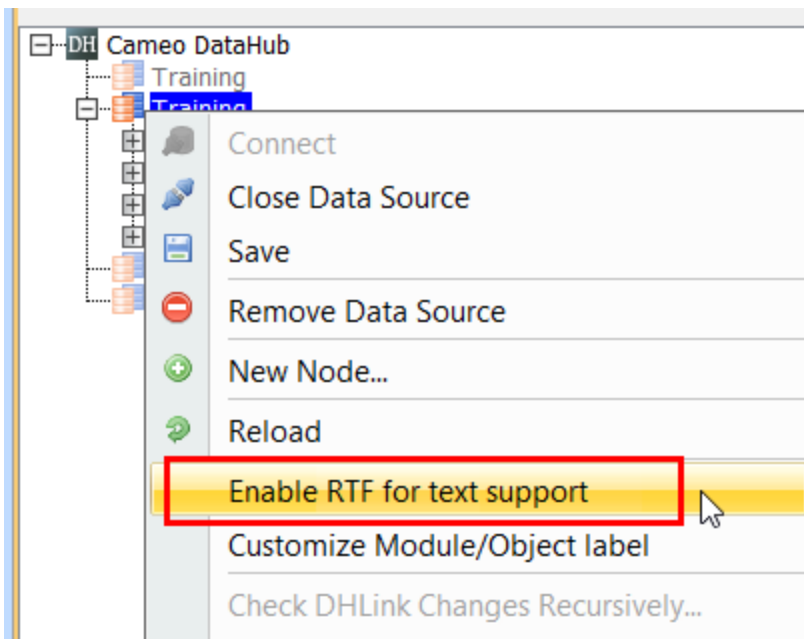
1. On the main menu, click **Options > Environment**. The **Environment Options** dialog opens.
2. In the left pane, select **Cameo DataHub**. Under the **General** group, set the **Save HTML images from the data source in the project as attached files** option to **true**, as shown below:



3. Click **OK** to close the **Environment Options** dialog.

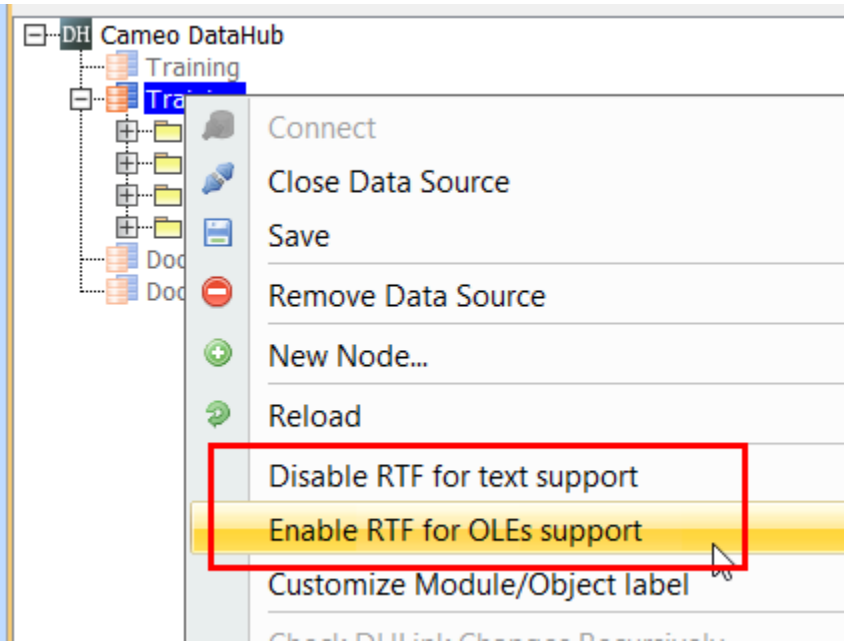
To enable RTF text support

- Right-click the DOORS Data Source and select **Enable RTF for text support**, shown below:



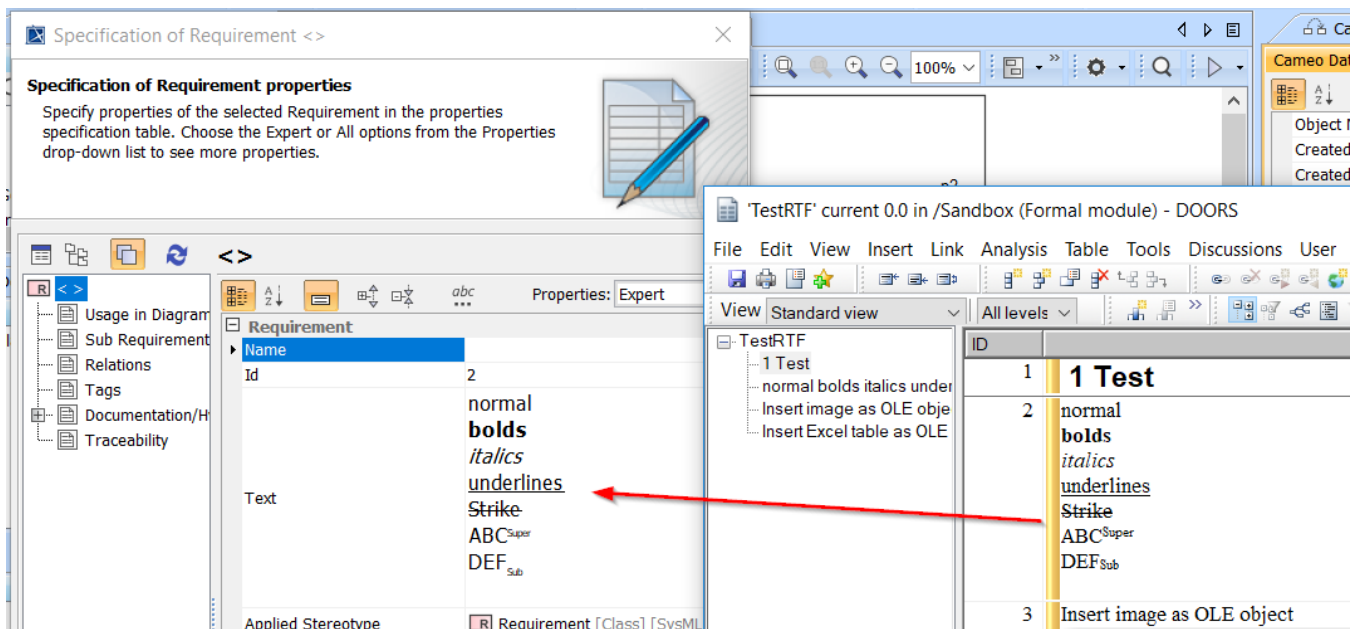
To enable RTF and OLE support for text style and image

- 1. Right-click the DOORS Data Source and select **Enable RTF for text support**.
- 2. Right-click the DOORS Data Source again and select **Enable RTF for OLEs support**.



RTF and OLE command	Function
Enable RTF for text support	Allows support of text styles in RTF when copying data from DOORS to MagicDraw.
Disable RTF for text support  (available after selecting <b>Enable RTF for text support</b> )	Suspends RTF and OLE support.
Enable RTF for OLEs support  (available after selecting <b>Enable RTF for text support</b> )	Copies text styles and images as OLE objects from DOORS to MagicDraw. <div><div><div><div>!</div><div>Note</div></div><div>This function may take longer to complete the copying process, depending on the amount of data.</div></div></div>

If you selected only **Enable RTF for text support**, but did not select **Enable RTF for OLEs support** after right-clicking the DOORS Data Source for the second time, copying elements (e.g., Requirements) from DOORS to MagicDraw will include only text styles (e.g., bold, italic, underline, strikethrough, superscript, and subscript). However, any image in the data will not be copied.



Text styles in RTF is copied from DOORS to MagicDraw when enabling RTF for text support.

the Expert or All options from the Properties drop-down list to see more properties.

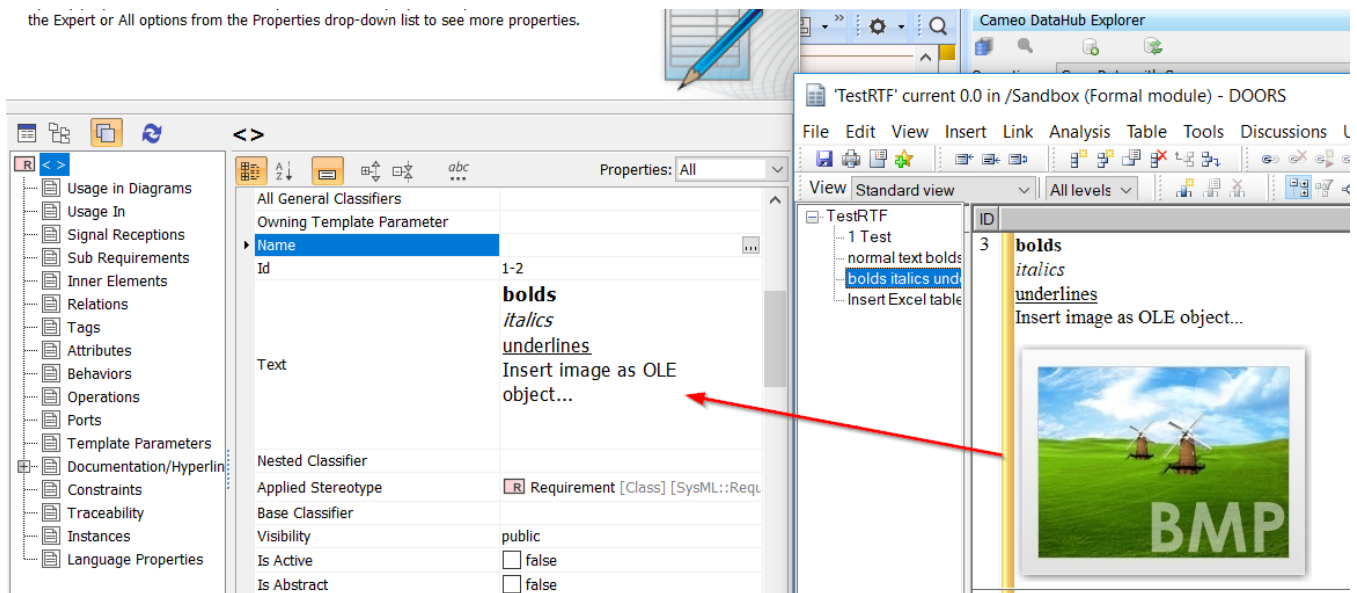
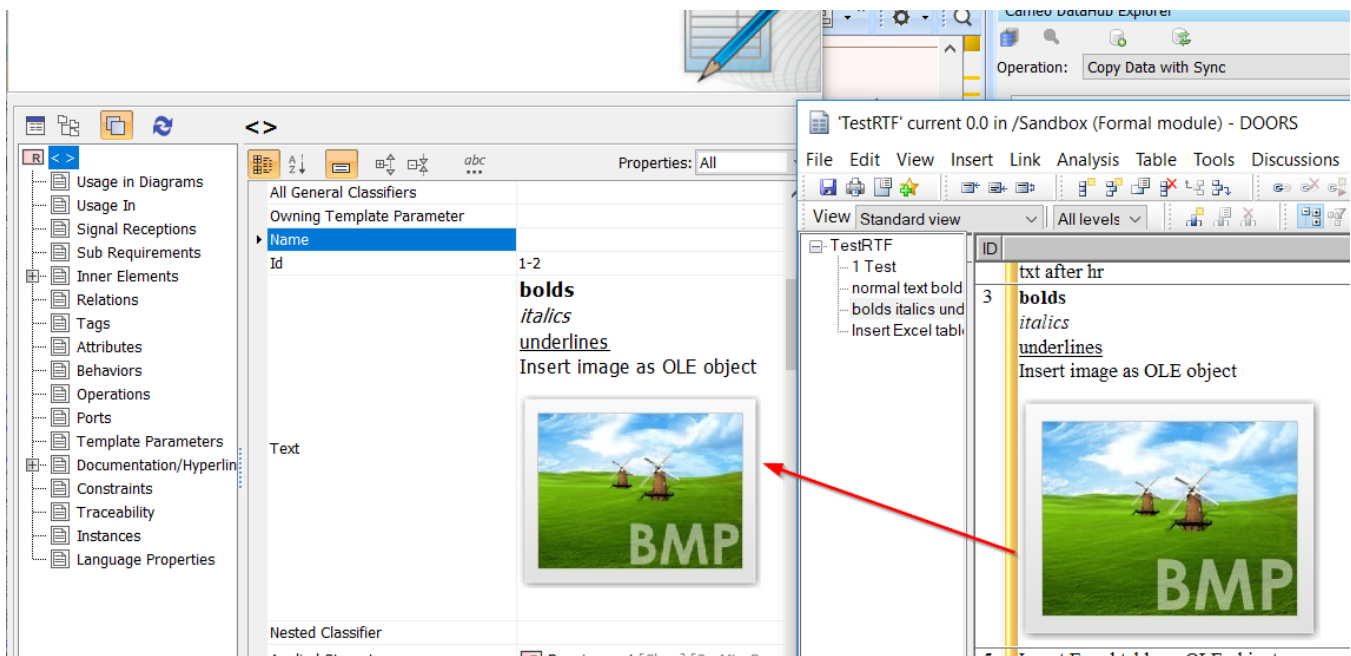


Image in RTF is not copied from DOORS to MagicDraw when selecting only the Enable RTF for text support command.

If you selected **Enable RTF for text support** and then select **Enable RTF for OLEs support** after right-clicking the DOORS Data Source for the second time, copying elements (e.g., Requirements) from DOORS to MagicDraw will include both text styles and image as an OLE object.



RTF text styles and image as an OLE object are copied from DOORS to MagicDraw.

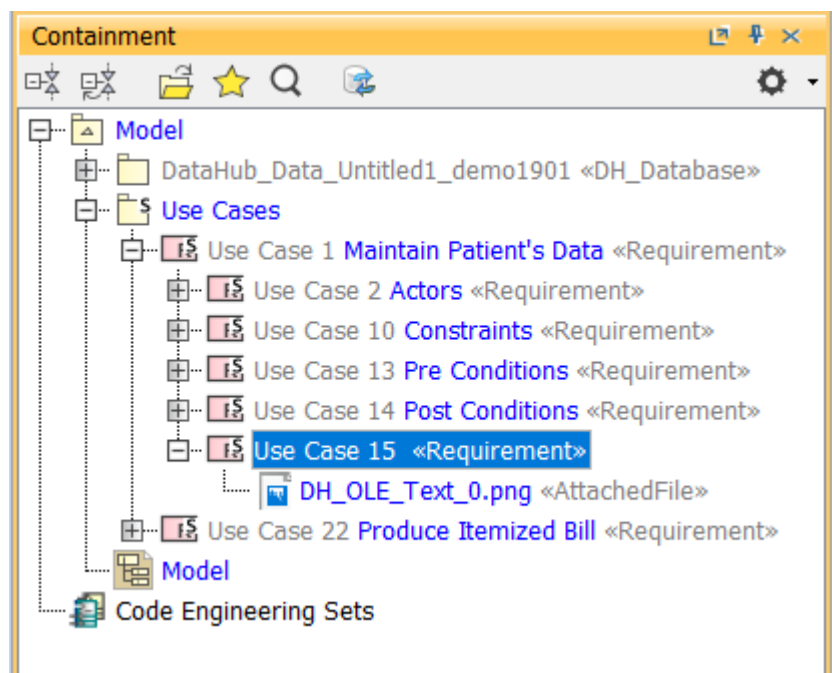


Image as OLE object is copied from DOORS to MagicDraw as an AttachedFile element under the copied element in the Containment tree.



#### Note

Due to the different compatibility of image types between MagicDraw and DOORS, image types are converted during synchronization between the tools.

- Synchronizing to MagicDraw: Image is converted to PNG.
- Synchronizing to DOORS: Image is converted to BMP.



#### Note

- Enabling RTF and OLE support affects all child modules under the DOORS Data Source. If you want to disable RTF and OLE support, right-click the DOORS Data Source and select **Disable RTF for text support**.
- A DOORS object that contains a WMF image is set as read-only to avoid conversion to BMP, which will result in the loss of functionality for the vector image.
- A DOORS object that contains any other OLE object besides an image is set as read-only because DataHub does not support OLE objects.
- In most cases, the OLE content (e.g., embedded Excel table or Word) is converted to an image and synchronized to MagicDraw.