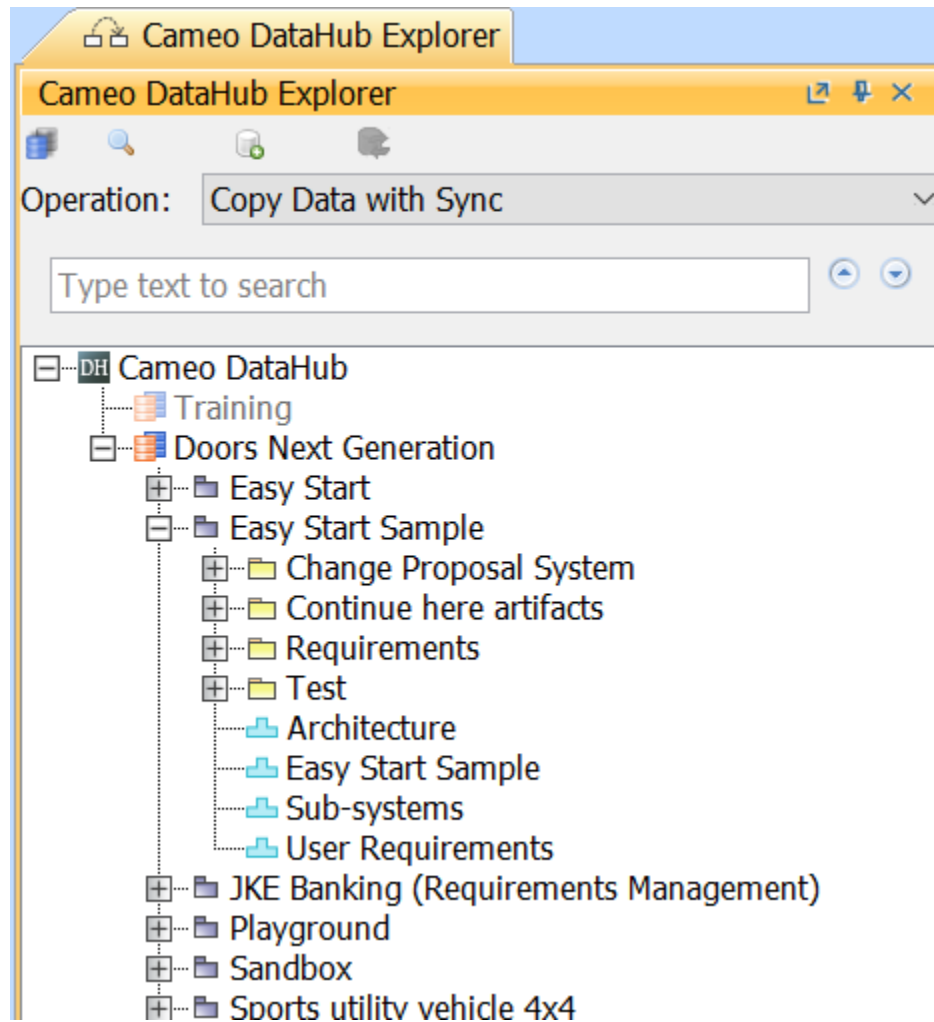


Opening Components as Data Sources

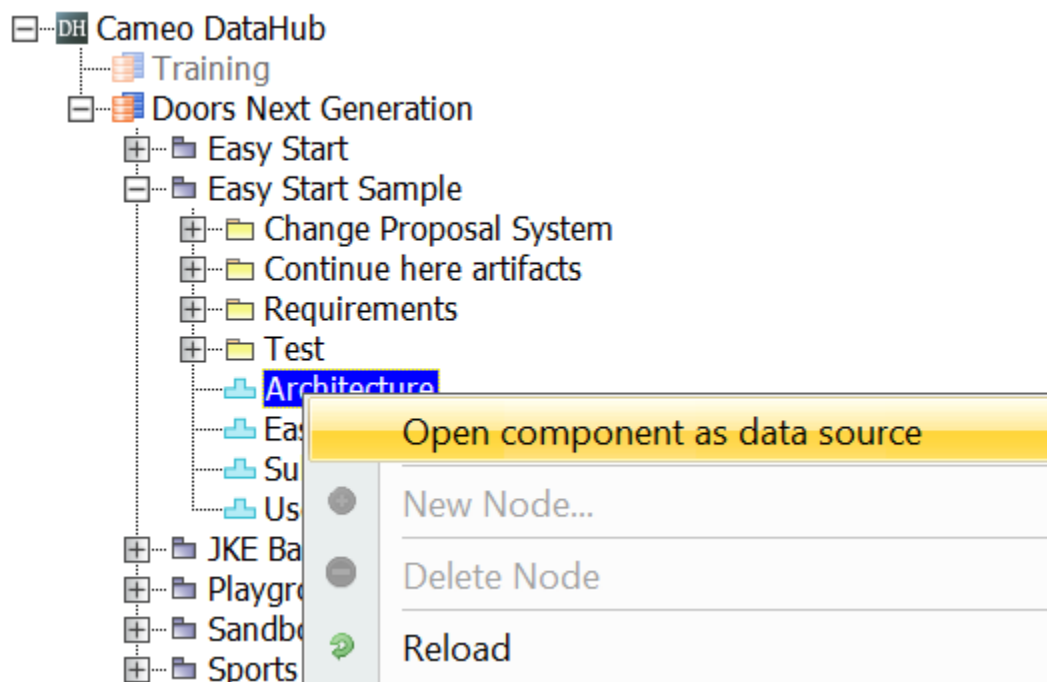
DataHub in this version still shows artifacts along with dummy Components, thus DataHub work from previous versions will not be affected.



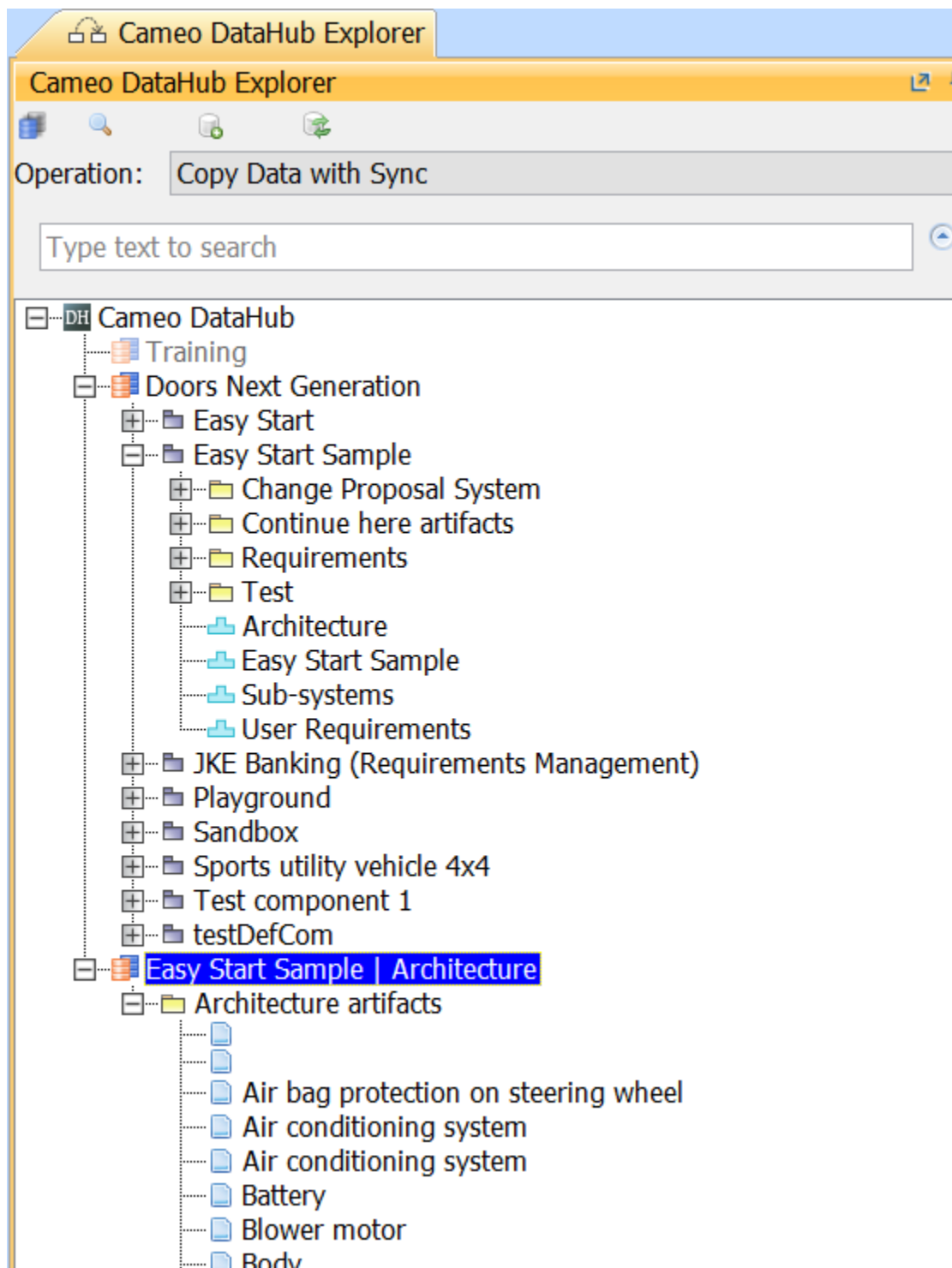
Dummy Components (in blue) shown with artifacts.

To open a Component as a new Data Source

- Right-click any dummy Component (in blue) and choose **Open component as data source**. DataHub will create a new Data Source and show those artifacts. This Data Source will always be connected with the selected Component newly open.



The Open component as data source command to connect the Data Source to the selected Component newly open.



The newly created Data Source (highlighted) from the newly open Architecture Component.