
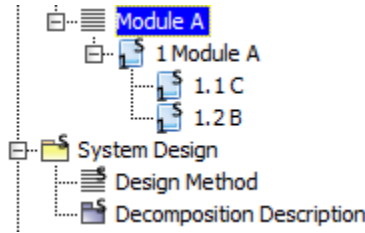


One-way synchronization

Synchronization updates data from one end of a DHLink to another. With one-way synchronization, data flows in only one direction. With two-way synchronization, you can either synchronize data from the source to the target or from the target to the source. Nodes that are selected for one-way synchronization have the  icons.



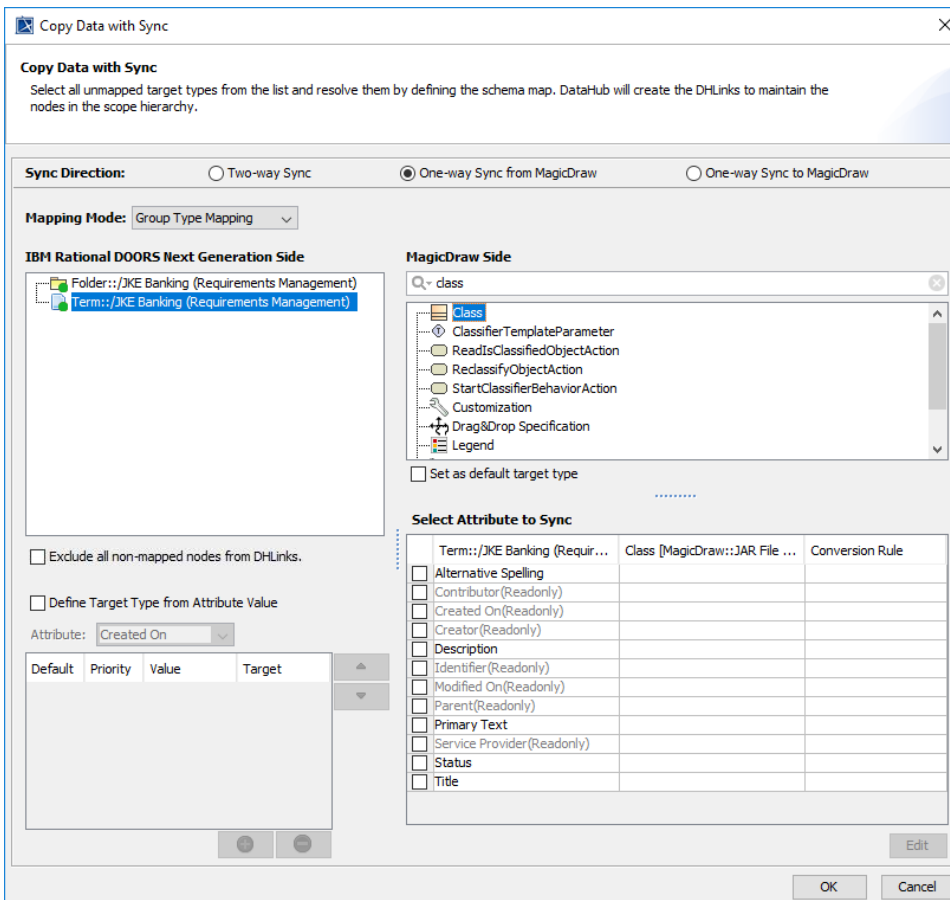
Nodes selected for one-way synchronization in the MagicDraw Containment tree.

One-way synchronization updates data only in the direction specified in the **Sync Direction** option. For example, if the synchronization direction is from the source to the target, DataHub will synchronize updates that come from the source to the target data.

If there are no changes in the source data, a message saying there are no changes to synchronize appears.

To copy data with one-way synchronization

1. Drag a source node to a target node. The **Copy Data with Sync** dialog appears, depending on what you have selected in the **Operation** drop-down list. From the **Mapping Mode** drop-down list, choose either **Group Type Mapping** or **Individual Type Mapping**.



Copy Data with Sync

Select all unmapped target types from the list and resolve them by defining the schema map. DataHub will create the DHLinks to maintain the nodes in the scope hierarchy.

Sync Direction: ☐ Two-way Sync ☒ One-way Sync from MagicDraw ☐ One-way Sync to MagicDraw

Mapping Mode: Group Type Mapping

IBM Rational DOORS Next Generation Side

- Folder::/JKE Banking (Requirements Management)
- Term::/JKE Banking (Requirements Management)

MagicDraw Side

Q= class

- Class
- ClassifierTemplateParameter
- ReadIsClassifiedObjectAction
- ReclassifyObjectAction
- StartClassifierBehaviorAction
- Customization
- Drag&Drop Specification
- Legend

☐ Set as default target type

Select Attribute to Sync

Term::/JKE Banking (Requir...	Class [MagicDraw::JAR File ...	Conversion Rule
<input type="checkbox"/> Alternative Spelling		
<input type="checkbox"/> Contributor(ReadOnly)		
<input type="checkbox"/> Created On(ReadOnly)		
<input type="checkbox"/> Creator(ReadOnly)		
<input type="checkbox"/> Description		
<input type="checkbox"/> Identifier(ReadOnly)		
<input type="checkbox"/> Modified On(ReadOnly)		
<input type="checkbox"/> Parent(ReadOnly)		
<input type="checkbox"/> Primary Text		
<input type="checkbox"/> Service Provider(ReadOnly)		
<input type="checkbox"/> Status		
<input type="checkbox"/> Title		

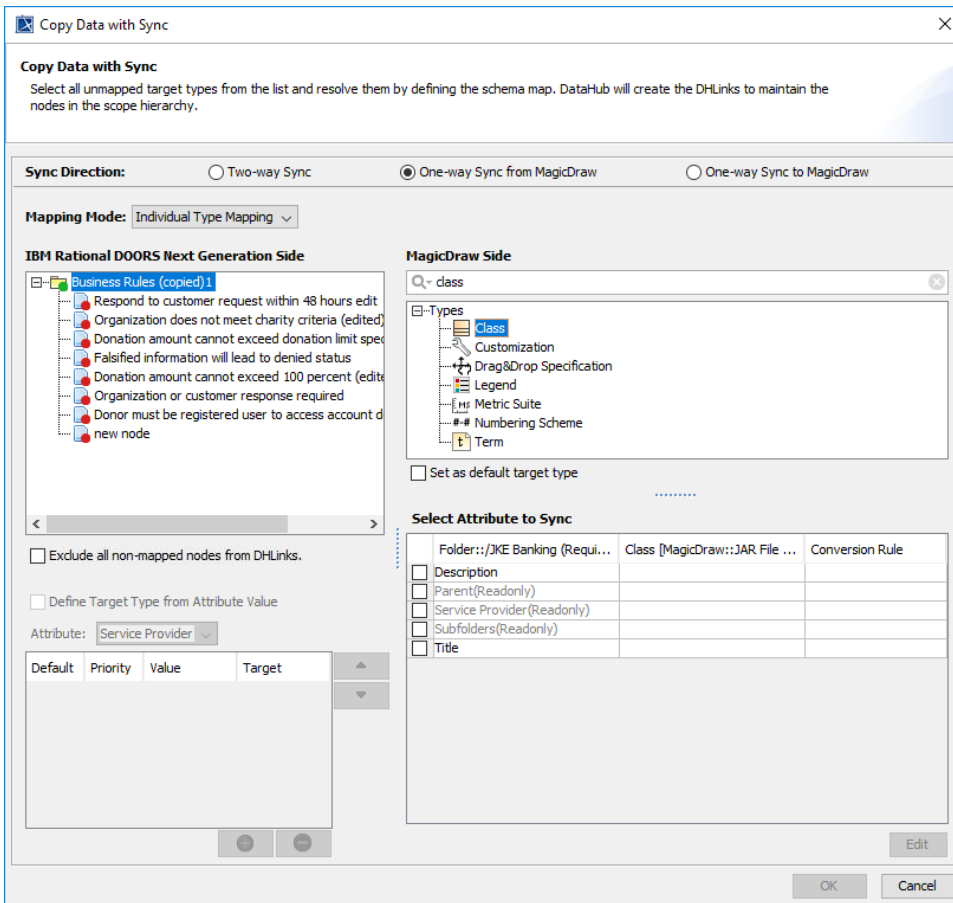
☐ Exclude all non-mapped nodes from DHLinks.

☐ Define Target Type from Attribute Value

Attribute: Created On

Default	Priority	Value	Target

OK Cancel



2. From the **Sync Direction** option, choose the direction of data synchronization. The selected synchronization direction will apply to all nodes to copy. Available options for data synchronization direction are **Two-way Sync**, **One-way Sync to MagicDraw**, and **One-way Sync from MagicDraw**.
3. [Complete the schema mapping](#) then click **OK** to start copying data.

To apply one-way or two-way synchronization direction to any existing relations

1. Double-click the root node of the DHTlink hierarchy or right-click it and select **Properties**. The Cameo DataHub **DHTlink** panel opens.
2. Right-click the relation that you want to apply one-way synchronization to and select **Change Direction**.
3. Select the synchronization direction that you want. The selected synchronization direction will recursively apply to all child nodes.

