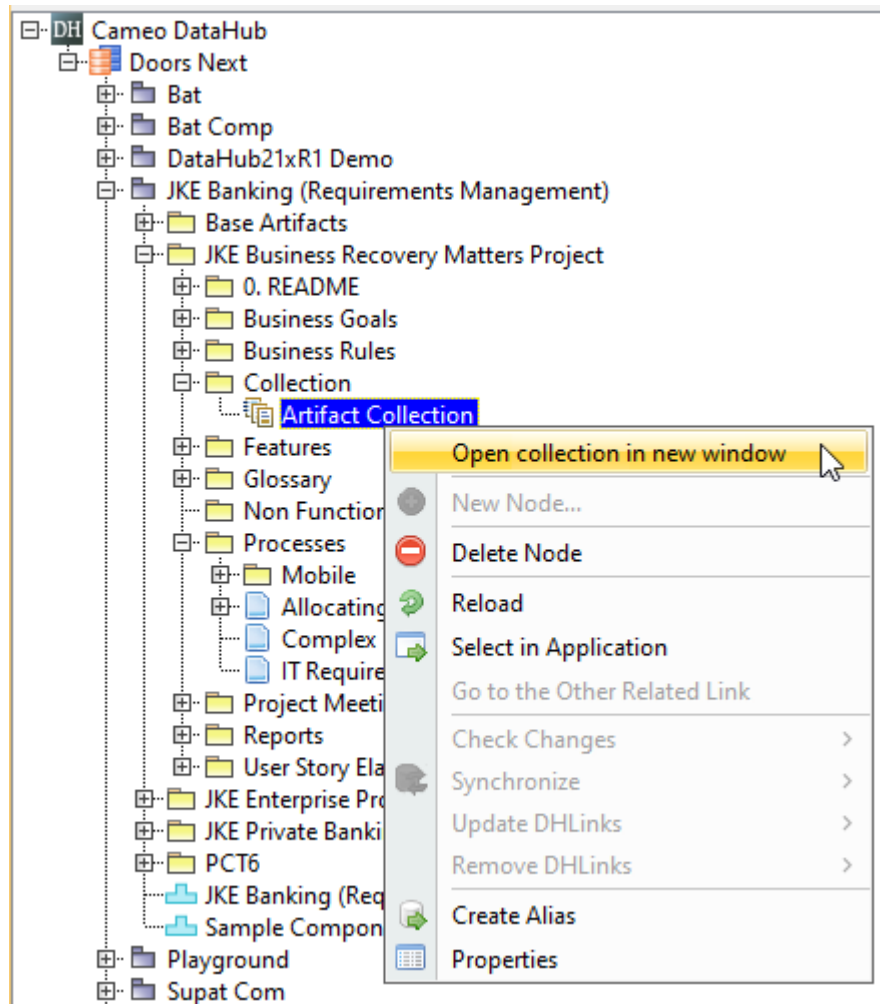


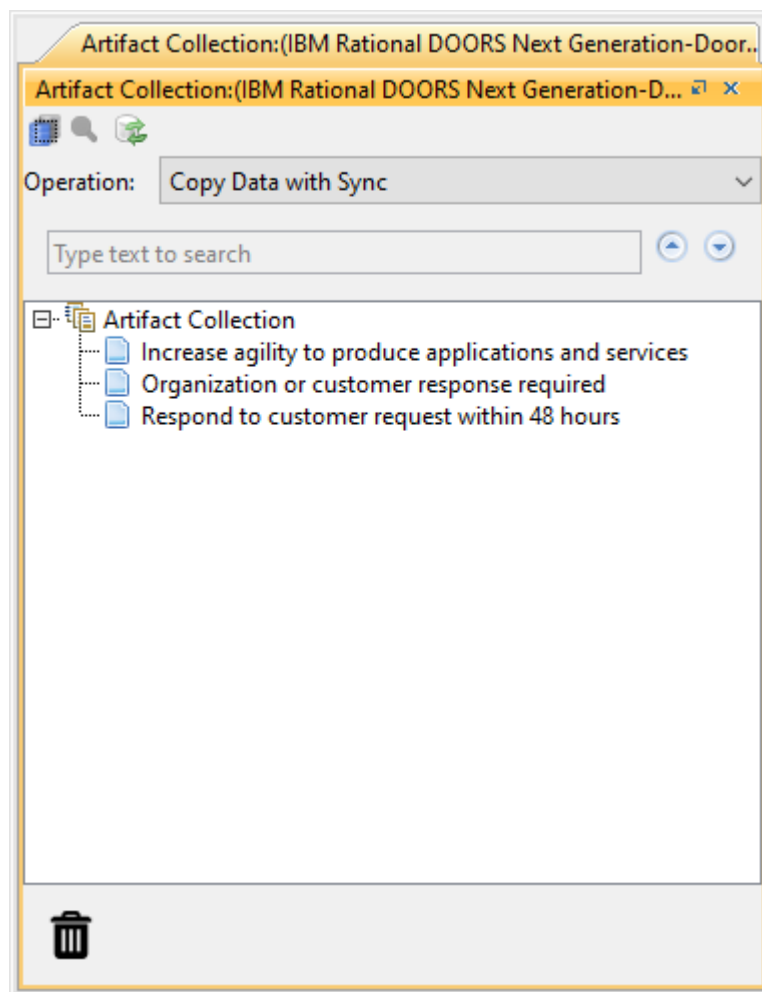
# Collection node in DOORS Next Generation

To open a Collection artifact in a new tab

- Right-click a Collection element in DataHub Explorer and select **Open collection in new window**.



The Open collection in new window command.



An open DOORS Next Generation Collection artifact tab in DataHub Explorer.

The new Collection artifact tab that shows items of the Collection artifact will open in DataHub Explorer.