

Advanced cases of properties visibility

There are two methods of displaying stereotype properties that have not yet been applied:

- **Profile application.** Properties will be visible only when the owning package of an element has a corresponding profile application.
- **Another stereotype and / or metaclass.** Properties will be visible only when:
 - Another stereotype is already applied to an element.
 - An element's metaclass is one of the metaclasses extended by the stereotype.

To make the visibility of stereotype properties dependent on a corresponding profile application

1. Open the customization element [Specification window](#).
2. Click to change the **Show Properties When Not Applied** property to *true*.
3. Click to change the **Show Properties When Not Applied Limited By Profile Application** property to *true*.

To make the visibility stereotype properties dependent on another stereotype or a metaclass

1. Open the customization element [Specification window](#).
2. Click to change the **Show Properties When Not Applied** property value to *true*.
3. Click the **Show Properties When Not Applied Limited By Element Type** property and then select a stereotype or a metaclass.



You can select more than one value.

Case Study

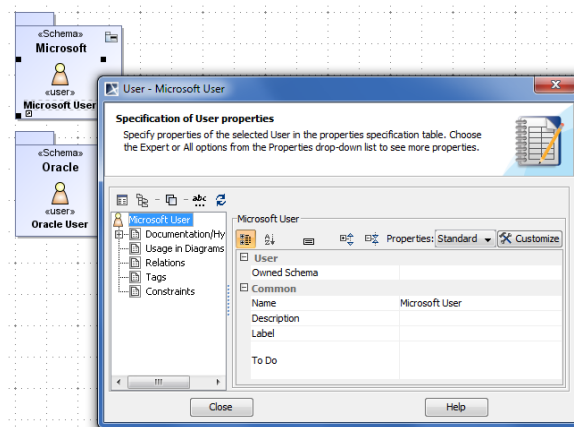
Let's analyze the customization element of the «OraUser» stereotype in the *Oracle Customization* profile (*Oracle_Profile.mdzip*). This profile belongs to the *Cameo Data Modeler* plugin and can be used for database modeling.

If the «User» stereotype is selected as the **Show Properties When Not Applied Limited By Element Type** property value, properties of the «OraUser» stereotype will be visible only for elements that have the «User» stereotype applied.

If the **Show Properties When Not Applied Limited By Profile Application** property value is set to *true*, properties of the «OraUser» stereotype will be visible only for elements whose owning package has the *Oracle Customization* profile application, such as elements inside the Oracle schema.

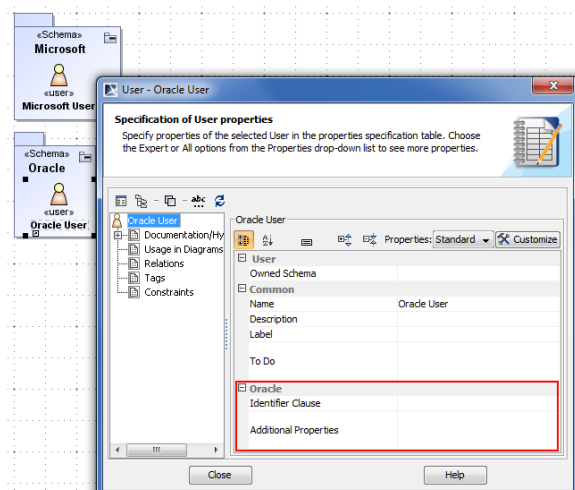
Related Pages

- [Creating Customization Data](#)
- [Using Customization Data](#)
- [Customizing Specification Window](#)



Specification window of user that is NOT INSIDE Oracle schema

In conclusion, Oracle-specific properties will be visible only for users inside the Oracle schema.



Specification window of user that is INSIDE Oracle schema