

Creating new projects from templates



This functionality is available in Standard, Professional, Architect, and Enterprise editions.

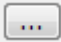
By default, the following templates are available in the **New Project** dialog: C++, CORBA IDL, Guide to UML Diagrams Project, Java, Metamodeling, RUP, Use Case modeling, and WAE.

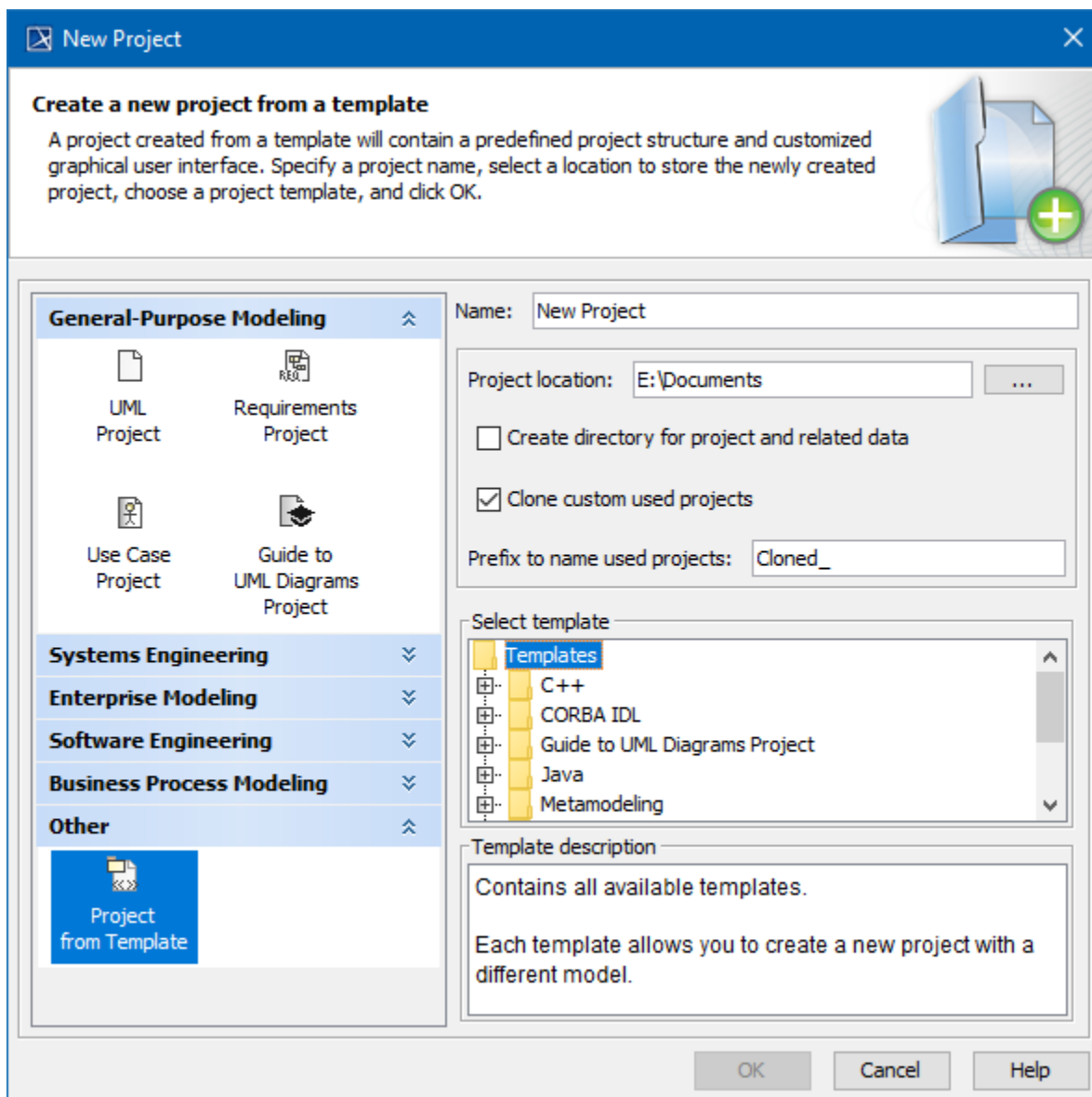
A new project created from the template will contain specific structure, model elements, and stereotypes that were predefined in the template. As of version 17.0.3, when creating a new project from the template, you can select to clone the custom used projects that exist in the template.

To create a new project from template

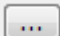
1. Do one of the following:
 - From the **File** menu, select **New Project**.
 - On the main toolbar, click the **New Project** button.
 - Press Ctrl + Shift + N.


In all cases, the **New Project** dialog opens.

2. Expand the **Other** group and select the **Project from Template** icon.
3. Specify the new project name in the **Name** box.
4. Click the  button to select the location in your file system to store the new project.
5. Select the template from the templates tree and click **OK**.



The following table provides descriptions of the **New Project** dialog with the *Project from Template* icon selected under the **Other** category.

Element name	Type	Description
Other	Category	Select the Other category to see the list of the available templates.
Project from Template	Icon	Select the Project from Template icon to create a new project from a template.
Name	Text box	Type the name of the new project to create from a template.
Project location	Text box	Click the  button to select a new project location. The Select Location dialog opens.
Create directory for project and related data	Check box	Click the check box to create a new folder for the new project. The folder name will be the same as the specified project name.

Clone custom used projects	Check box	Click to clone used projects from template project. In the new project from template, the copies of the used projects will be created.
Prefix to name used projects	Text box	<p>Type the prefix for the name of each cloned used project. The default value is <i>Cloned_</i>. For example, if a used project of the template project is named <i>Requirements</i>, then the name of the cloned used project in the newly created project is <i>Cloned_Requirements</i>.</p> <div>  The text box is available only if the Clone custom used projects check box is selected. </div>
Select template	List	Select template from the list. The list represents the folders and files that are located in <MagicDraw installation folder>\templates.
Template description	Text area	The predefined template description is displayed. Note that this field is not editable.

You can also import the desired template into your project. Select **File > Import From > Another Project** for this.

Related pages

- [Exporting projects as templates](#)
- [Creating custom project templates](#)