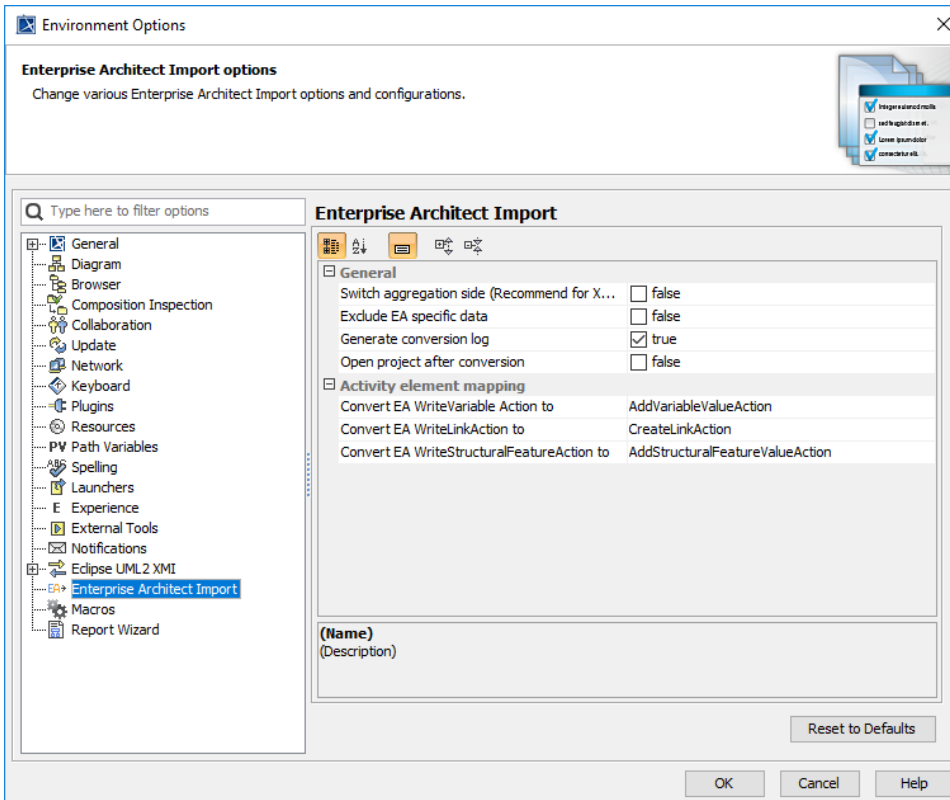


# Customizing the conversion options

In addition to the options that you have in the **Import Enterprise Architect File** dialog, several other conversion options exist in the modeling tool, and you can specify it in the **Environment Options dialog**.

To customize Enterprise Architect Import options in the **Environment Options** dialog

1. On the main menu, click **Options > Environment** to open the **Environment Options** dialog.
2. In the options group list, select **Enterprise Architect Import**.



3. The transformation options are classified into two groups: **General** and **Activity element mapping**:
  - Options in the **General** group are the same as those in the **Import Enterprise Architect Files** dialog.
  - The **Activity element mapping** group provides options to convert the EA elements to other element types as it is described in the following table:

Option	Description
Convert EA WriteVariableAction to	To convert EA WriteVariableAction to either AddVariableValueAction or RemoveVariableValueAction.
Convert EA WriteLinkAction to	To convert EA WriteLinkAction to either CreateLinkAction or DestroyLinkAction.
Convert EA WriteStructuralFeatureAction to	To convert EA WriteStructuralFeatureAction to either AddStructuralFeatureValueAction or RemoveStructuralFeatureValueAction.