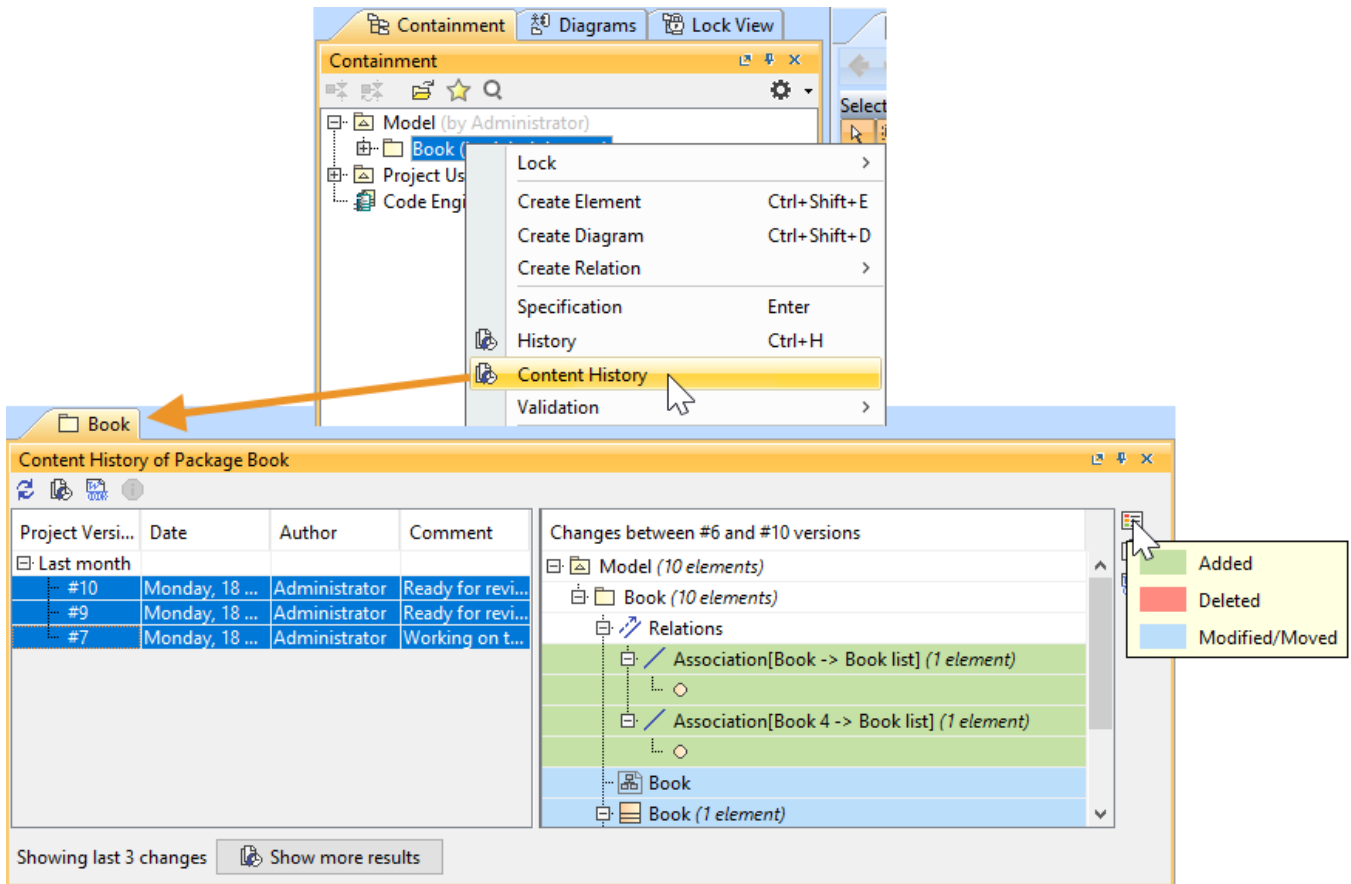


# Reviewing content history

You can view changes in the model in a particular scope at the element level; that is, a selected package or a classifier element (a composed element). The ability to see the history of a selected **Block**, **Requirement**, or another composed element is a big benefit for system engineers.



History of element changes in the scope of a *Book* package.


In the history review panel, you can see various details about the changes between selected versions, such as the list of elements that was changed, when changes were made, and who made changes. Different colors describe if a particular model element is added, deleted or modified. You can also export the content history of changes to a report in a *docx* format.



## Changing the default Show more results value

By default, only 3 project versions are loaded when clicking the **Show more results** button; however, you can change this default value by adding an argument to the properties file of the modeling tool (see instructions below):

1. Go to `<modeling tool installation directory>/bin` and open the properties file of your modeling tool.
2. Do one of the following:

- Enter the `-Dcontent.history.versions` Java argument and define the maximum number of project versions to be loaded, e.g., `-Dcontent.history.versions=10`.
1. From the shortcut menu, select **Content History**. The history review panel opens, where you can analyze changes between selected server project versions.
  2. To see differences between server project versions:
    - Double click the project version to see differences between the selected version and the earlier one.
    - Select the list of versions and click the  button.
  3. Save and close the file.




## Stopping collecting changes

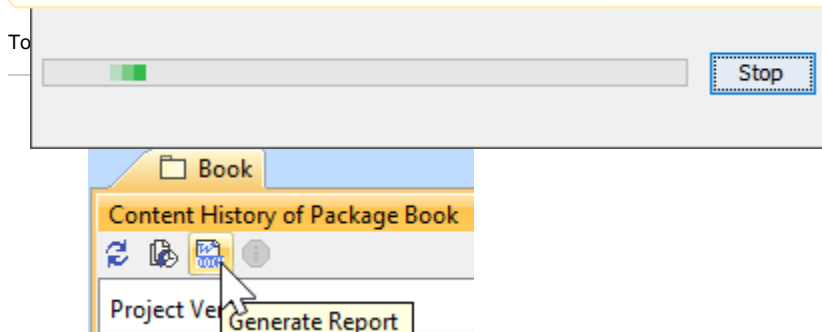
To display version properties

1. Open the **Content History** panel as described above.
2. Select the project version.

If retrieving the content history takes too much time, you can click the **Stop** button to complete reviewing changes through versions of the selected composed element.

3. In the panel's toolbar, click the  button or right-click the selected version and select the **Version Properties** command.

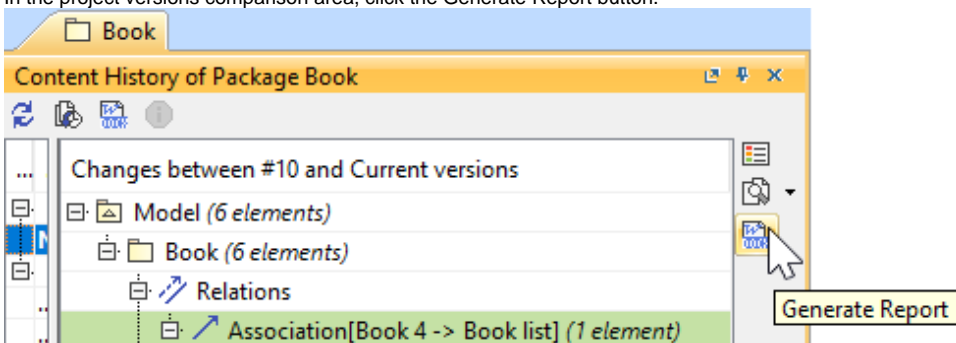
The button is disabled if either no version or multiple versions are selected.



3. The **Save As** dialog opens to specify the location of a report file.

To generate a project Comparison report (Differences report)

1. Open the **Content History** panel.
2. In the project versions comparison area, click the Generate Report button.



3. The **Save As** dialog opens to specify the location of a report file.

In a Differences report you can find project scope and element scope:

#### Related pages

- Project scope – name, version, the number of elements and diagrams in the compared project versions.
- Element scope – name, path and element type of the particular model element that was chosen as a content history scope.
- [Analyzing comparison results](#)
- [Reviewing model history](#)
- [Reviewing historical aspects of the Euplifer](#)
- [Reviewing element history and inspecting changes](#)

This Differences report compares the project only includes changes from the chosen model element scope and not the entire model. These changes are included in the sections **Diagram Differences**, **Model Differences**, and **Changes by Type** of the report.