

Cloning projects

You can clone the latest version of your server project as a separate project or the latest version of a project branch as a separate branch. The cloned project can be used as a "template" to create a new project or as an independent base for new development. IDs of a cloned project and elements are reset automatically. Project permissions are reset as well; the project is available only for the user who has cloned the project. All references to used projects (if there are any) are maintained.



- You can only clone either the latest version of a project or the latest version of a project branch.

To clone a project or a branch

- You need at least double the amount of memory to clone a project in comparison to opening a project.

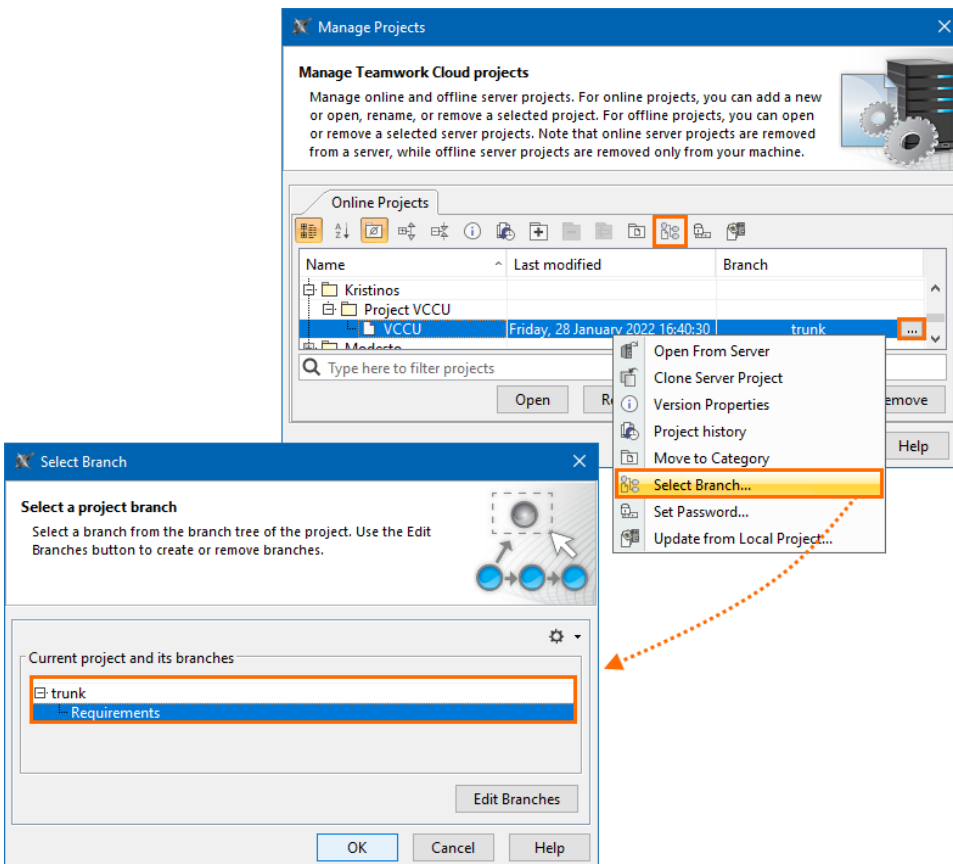
- On the main menu, click **Collaborate > Projects**. The **Manage Projects** dialog opens.
- To clone a project, select the project you want to clone.



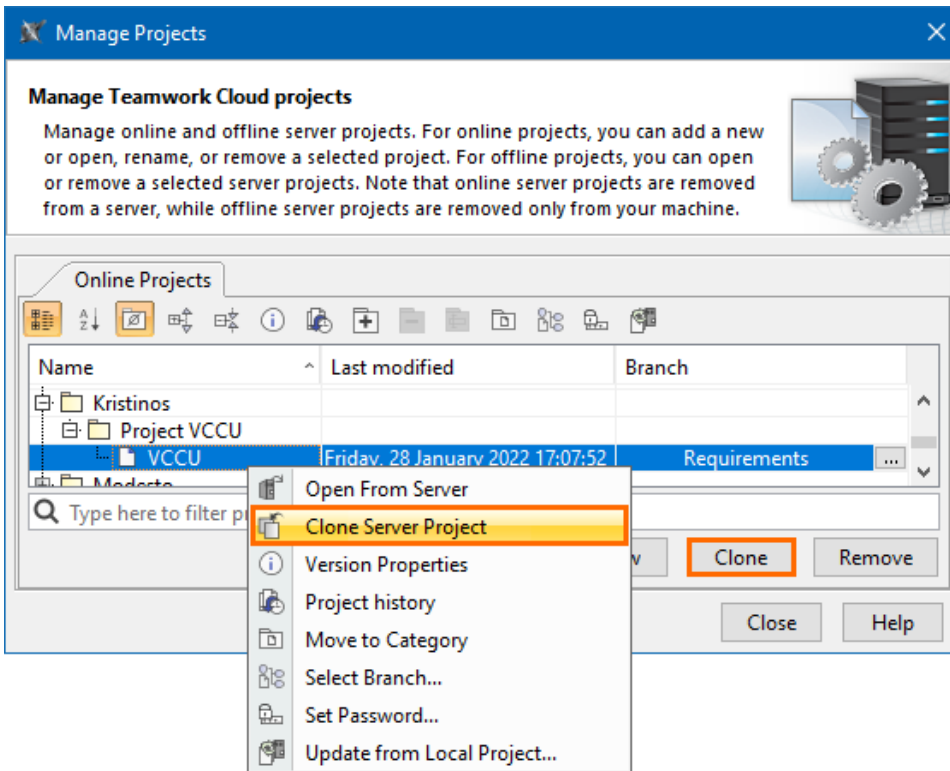
You can use the search bar to filter used projects faster by name.

- (Optional) To clone a branch of a chosen project, select the project and do one of the following:

- Click the **Select Branch** button.
- Click the three dots button in the **Branch** section.
- Right-click the project and select **Select Branch**.
Select the branch you want to clone in the **Select Branch** dialog and click **OK**.



- To clone the selected project or branch, do one of the following:
 - Click the **Clone** button.
 - Right-click the project and select **Clone Server Project**.



5. The **Clone Server Project** dialog opens, wherein you need to type the name of the cloned project, select a category to save the project and/or add a comment. Click **More**, if you want to add a tag for the project.

6. (Optional) To clone with used projects, click **More** , select the **Used Projects** tab and check the **Clone Used Projects** check box. You can change the names of the cloned used projects in the **New Name** section once the **Clone Used Projects** check box is selected.

Clone Server Project

Create a copy of server project

Enter a name for the new project, specify the project category and click Clone to copy the selected project version in Teamwork Cloud. Add a comment to represent the first version of the new project.

Name:
VCCU1

Category:
Project VCCU


Comment:

Version Tags Used Projects


☒ Clone Used Projects

| Name on Server | New Name |
|----------------|------------|
| Use Cases | Use Cases1 |

Less Clone Cancel Help

 Cloned used projects do not include package permissions, hidden packages, and code engineering sets.

7. Click **Clone** when you are done.
8. Close the **Manage Projects** dialog.

 Before using the cloned project with Teamwork Cloud web applications, [commit the newly cloned project to the server](#).

Related pages

- [Adding projects to Teamwork Cloud](#)