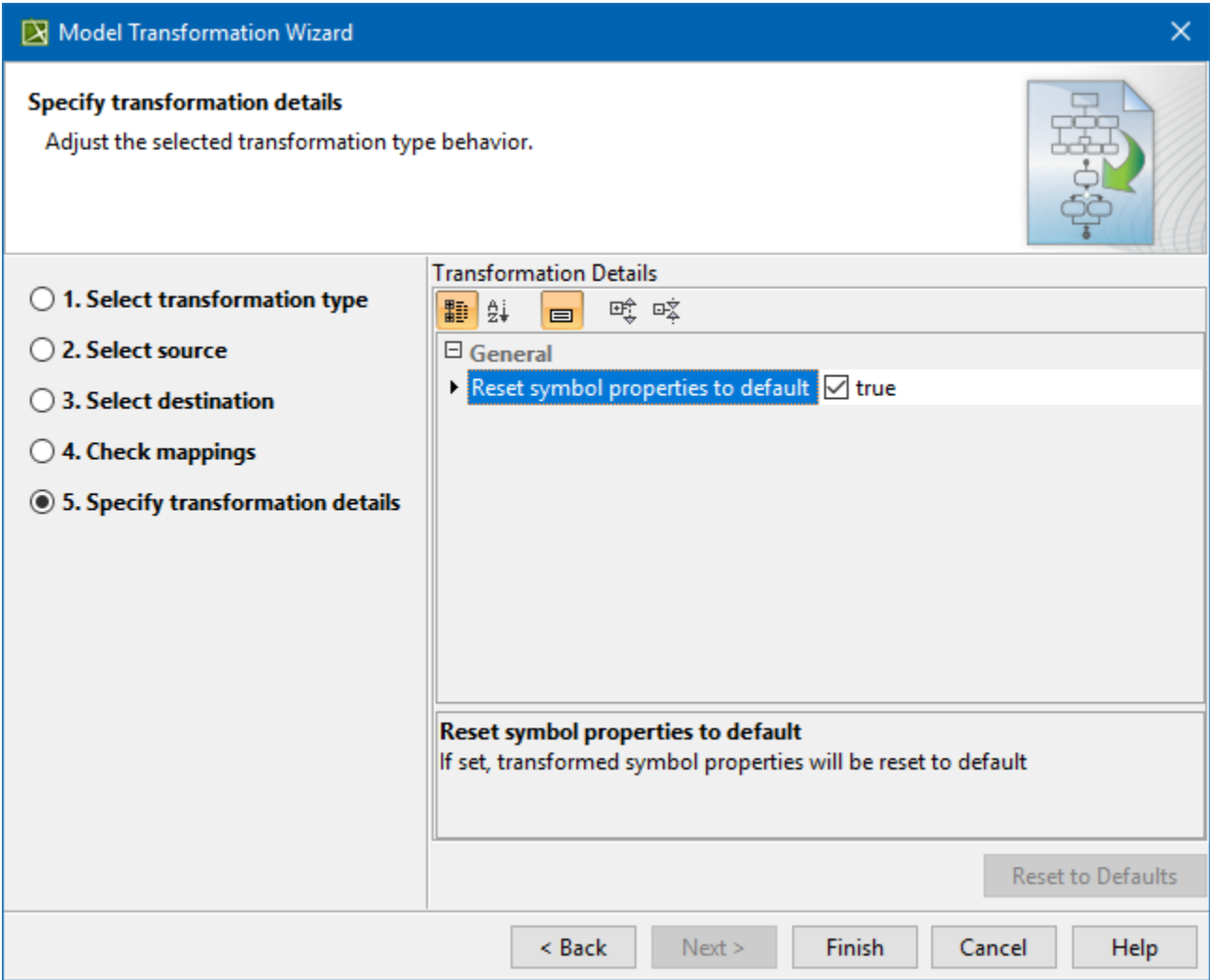


Setting custom transformation properties

The **Transformation Details** panel displays the various properties of a specific transformation, selected in the first step of the **Model Transformation Wizard**. Each transformation type has its own set of options, which govern functionality of that transformation.



To change the transformation properties to the default values, click **Reset to Defaults**.

The following operations are available in the **Specify transformation details** window:

Button	Function
Back	Return to the previous dialog box.
Finish	Finish the transformation configuration. The Model Transformations Wizard exits and the transformation results appear in the project.