

FAQs

On this page

- [Generating an output report document from Report Wizard](#)
- [Adding a new report template](#)
- [Removing a template](#)
- [Modifying a template file](#)
- [Adding Report Data into the template](#)
- [Removing Report Data from the template](#)
- [Setting the default viewer option for the report file](#)
- [Changing an output image format](#)
- [Changing an empty value configuration](#)
- [Adding a new variable](#)
- [Deleting a variable](#)
- [Modifying a variable](#)
- [Selecting a package for report generation](#)
- [Generating a normal text output format](#)
- [Calculating formulas on exported XLSX file](#)

Generating an output report document from Report Wizard

To generate an output report document from Report Wizard

1. On the **Tools** menu, click **Report Wizard**. The **Report Wizard** dialog will open.
2. Select the template or create a new one. Click **Next**.
3. Specify Report Data and add information for the variables. Click **Next**.
4. Select the document scope from the corresponding packages. Click **Next**.
5. Select the output location, images format, and text for blank fields.
6. Click **Generate**.

Adding a new report template

To add a new report template

1. On the **Tools** menu, click **Report Wizard**. The **Report Wizard** dialog will open.
2. Click **New**. The **New** dialog will open.
3. Enter the template name and description. Click the  button to specify the template file location.
4. Click **Create**.



Once a new template has been created, Report Wizard will add a folder with the entered template name and save the selected template in this folder.

Removing a template

To remove a template

1. On the **Tools** menu, click **Report Wizard**. The **Report Wizard** dialog will open.
2. Select a template from the list and click **Delete**.



Once removed, the selected template with its folder and reports cannot be recovered.

Modifying a template file

To modify a template file

1. On the **Tools** menu, click **Report Wizard**. The **Report Wizard** dialog will open.
2. Select a template from the list and click **Open**. The default editor and a template file for editing will open.
3. Modify the template and perform the save command in the editor.



A different editor will be used for each template format. For example, MS Word could be used for *.rtf template modification, or Macromedia Dreamweaver could be used for *.html template editing.

Adding Report Data into the template

To add **Report Data** into the template

1. On the **Tools** menu, click **Report Wizard**. The **Report Wizard** dialog will open.
2. Select a template or create a new one. Click **Next**. The **Select Report Data** pane will appear.
3. Click **New**. The **New** dialog will appear.
4. Enter the Report Data **name** and **description**. Click **Create**. A new **Report Data** will be created. In the next step, you may add new fields or delete the existing ones.

Removing Report Data from the template

To remove **Report Data** from the template

1. On the **Tools** menu, click **Report Wizard**. The **Report Wizard** dialog will open.
2. Select a template or create a new one. Click **Next**. The **Select Report Data** pane will appear.
3. Select the **Report Data** from the list and click **Delete**.

Setting the default viewer option for the report file

To set the default viewer option for the report file

1. On the **Tools** menu, click **Report Wizard**. The **Report Wizard** dialog will open.
2. Select a template and **Report Data** and specify the variables and package scope. Click the **Next** button to proceed.
3. At the last wizard step, select the **Display in viewer** after generating report check box. The report output will be displayed in the default editor or browser.

Changing an output image format

To change an output image format

1. On the **Tools** menu, click **Report Wizard**. The **Report Wizard** dialog will open.
2. Select a template and **Report Data** and specify the variables and package scope. Click the **Next** button to proceed.
3. At the last wizard step, select the output image format from the **Report Image Format** box.



The supported image formats include:

*.PNG and *.JPG

Changing an empty value configuration

for all supported report templates.

To change an empty value configuration

for **HTML**, **XML** and **Text** report templates.

1. On the **Tools** menu, click **Report Wizard**. The **Report Wizard** dialog will open.
2. Select a template and **Report Data** and specify the variables and package scope each time. Click the **Next** button to proceed.
3. At the last wizard step, select an option for output on blank fields:

for **RTF**, **OOXML** and **Text** report templates

- Select **Display empty value** or **Display value as**, and select **NA** or
- Enter the text to represent other than null value when the template query fields return empty.

Adding a new variable

To add a new variable

1. On the **Tools** menu, click **Report Wizard**. The **Report Wizard** dialog will open.
2. Select a template and **Report Data**. Click the **Next** button to proceed.
3. Click the **New** button when the **Variable** pane opens. The **Variables** dialog will open.
4. Enter the name of a new variable and its value (the value can be modified later after the variable has been created).
5. Click **Create**.

Deleting a variable

To delete a variable

1. On the **Tools** menu, click **Report Wizard**. The **Report Wizard** dialog will open.
2. Select a template and **Report Data**. Click the **Next** button to proceed.
3. Select a field and click **Delete** when the **Variable** step opens.

 You cannot recover any deleted **Report Data**.

Modifying a variable


To modify a variable

1. On the **Tools** menu, click **Report Wizard**. The **Report Wizard** dialog will open.
2. Select a template and **Report Data**. Click the **Next** button to proceed with the steps.
3. Select a field and modify its value when the **Variable** step opens. The value can be modified in the properties list or in the **Field Value** box below the properties list.

Selecting a package for report generation

To select a package for report generation

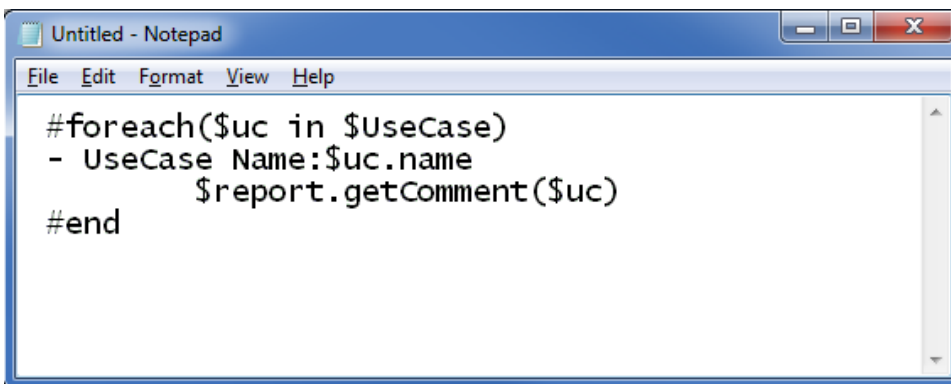
1. On the **Tools** menu, click **Report Wizard**. The **Report Wizard** dialog will open.
2. Select a template and **Report Data** and specify the variables. Click the **Next** button to proceed.
3. The package tree will open. Select the package of the project and click the **Add** button to add the elements from the package to the report.

 Clicking the **Add** button will add only the selected element, not its children, to the report scope. In order to include all children, click the **Add Recursively** button instead.

Generating a normal text output format

To generate a normal text output format

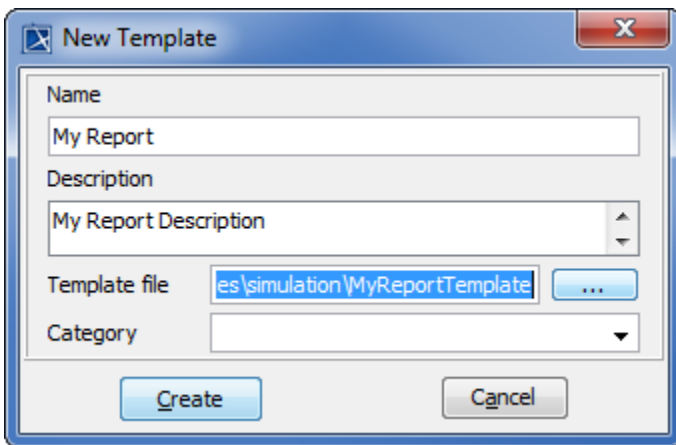
1. Create the MagicDraw query in the text file using the text editor, see the figure below.



```
#foreach($uc in $UseCase)
- UseCase Name:$uc.name
  $report.getComment($uc)
#end
```

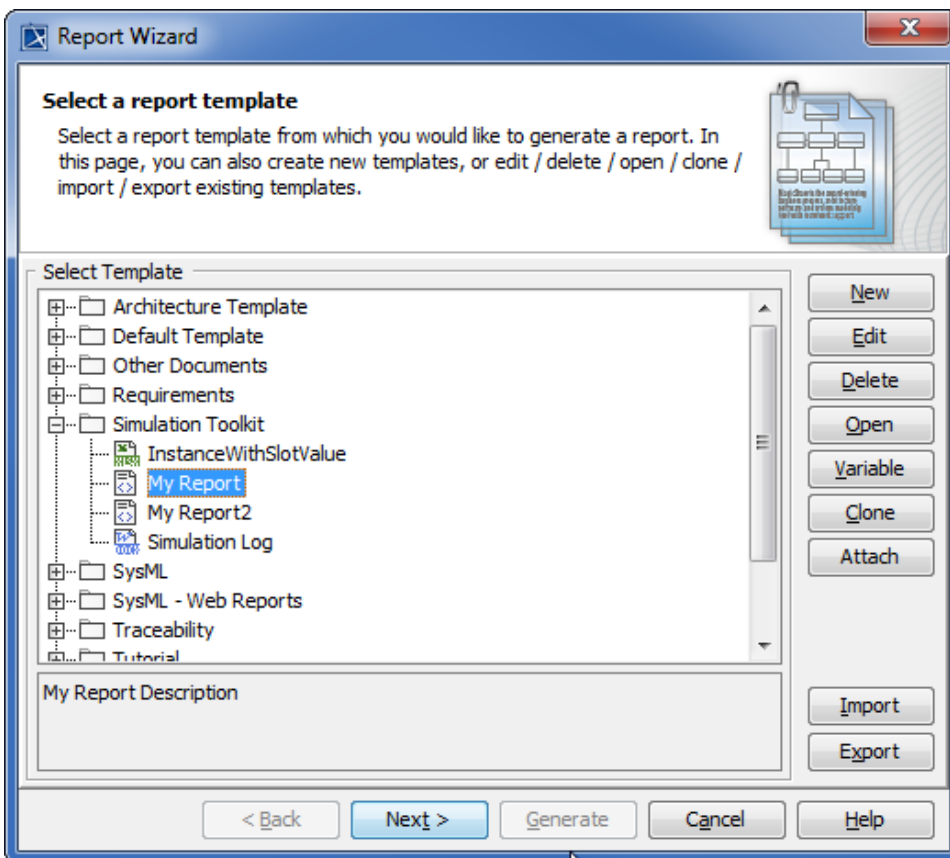
Entering Query in the Normal Text Template.

2. Create a new template in the **Report Wizard** dialog through the **New Template** dialog; see figure below.

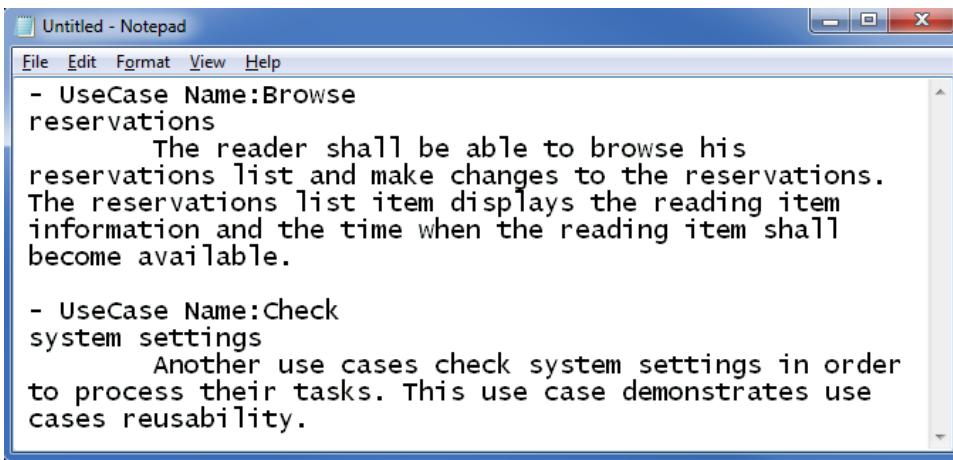


Creating New Text Template.

3. Select Text Template, see the first figure below, and generate the output report; see the second figure below.



Selecting Text Template to Generate Report Output.



Text Output Report.

Calculating formulas on exported XLSX file

If formulas are used in a template file, Excel will not automatically calculate them when the file is opened. It is caused by a limitation of the Velocity language, as the engine is not designed to work with Excel files. See the options below for fixing this issue.

To calculate formulas on exported XLSX file

-
- A single formula is calculated when the text field is double-clicked.
 - Search and Replace triggers the formula's recalculation. Press Ctrl+H, search for "=" and replace it with any symbol that is not used in the file, e. g., "[". Then, after replacing the symbols back, all formulas are recalculated.