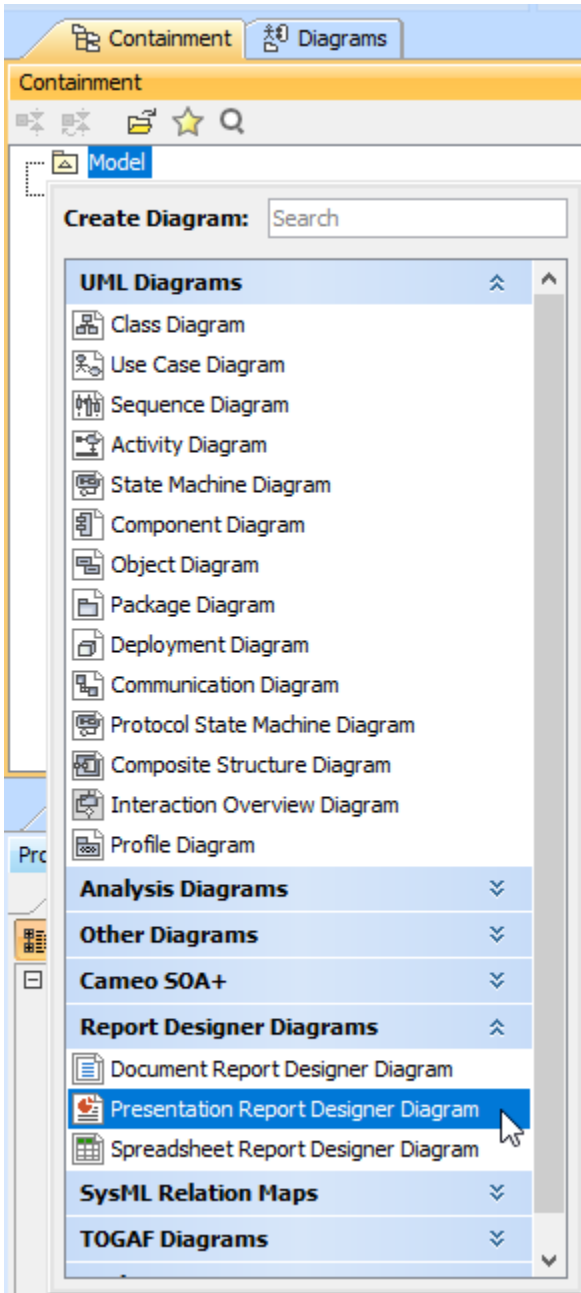


# Presentation Report Designer diagram

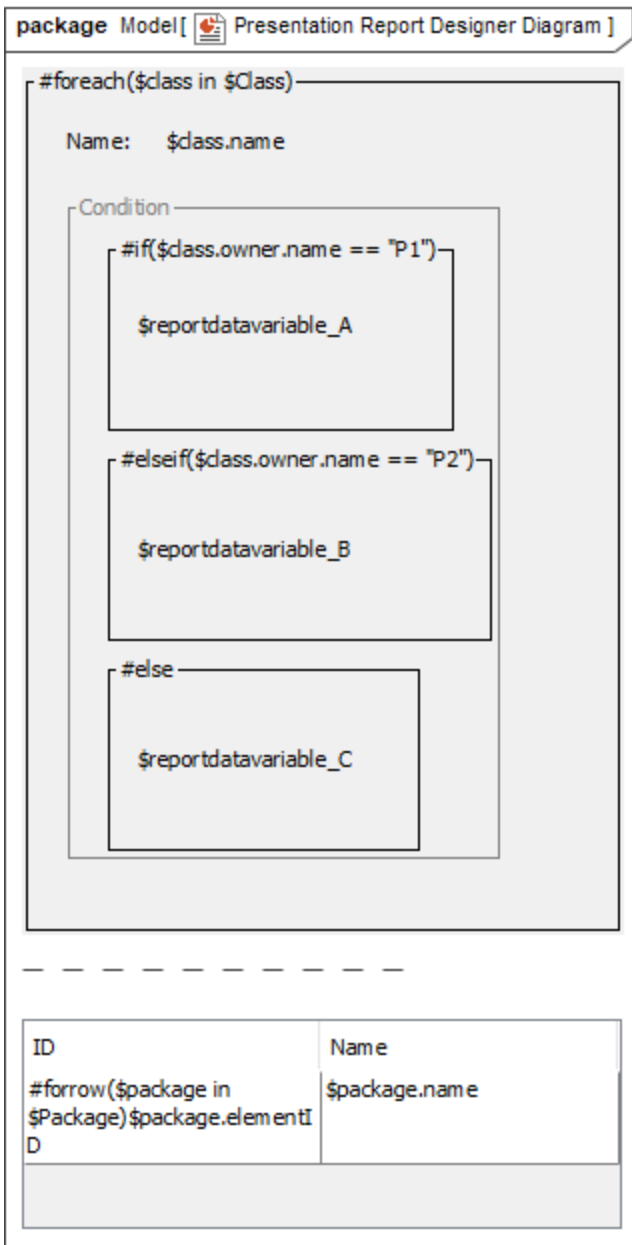
In this section, you will learn how to create the Presentation Report Designer diagram and generate it to a PPTX template that you can add in Report Wizard for generating reports later.

To create the Presentation Report Designer diagram and generate it to a PPTX template

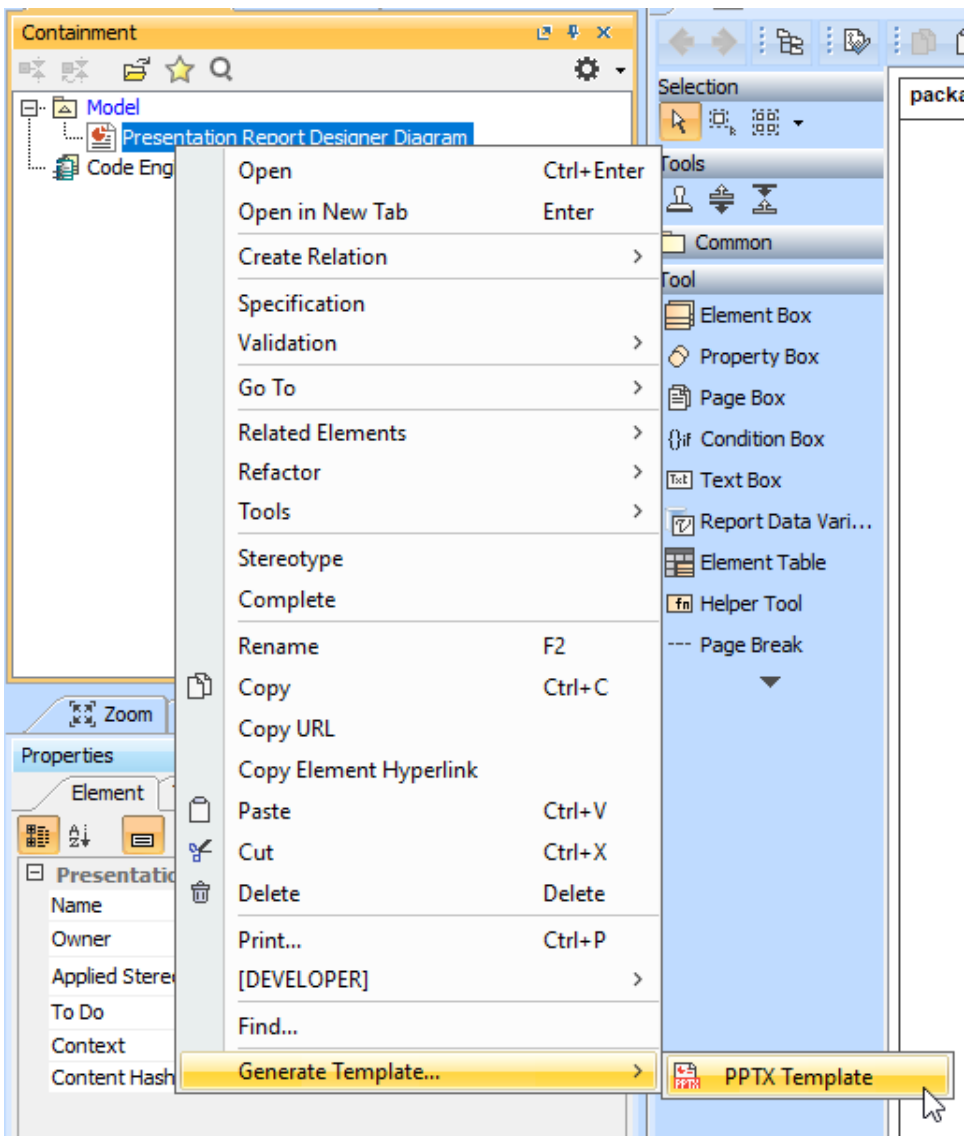
1. Right-click a Package in the Containment tree and select **Report Designer Diagrams > Presentation Report Designer Diagram**.



2. Create diagram elements in the working area of the diagram and specify values.
3. Arrange diagram elements as needed.



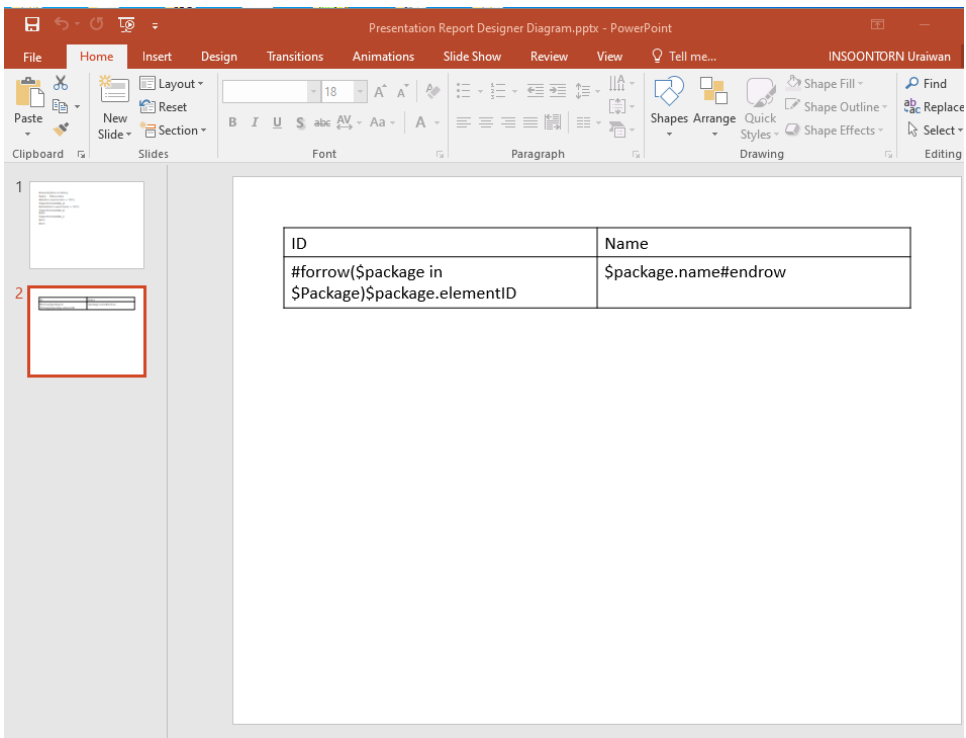
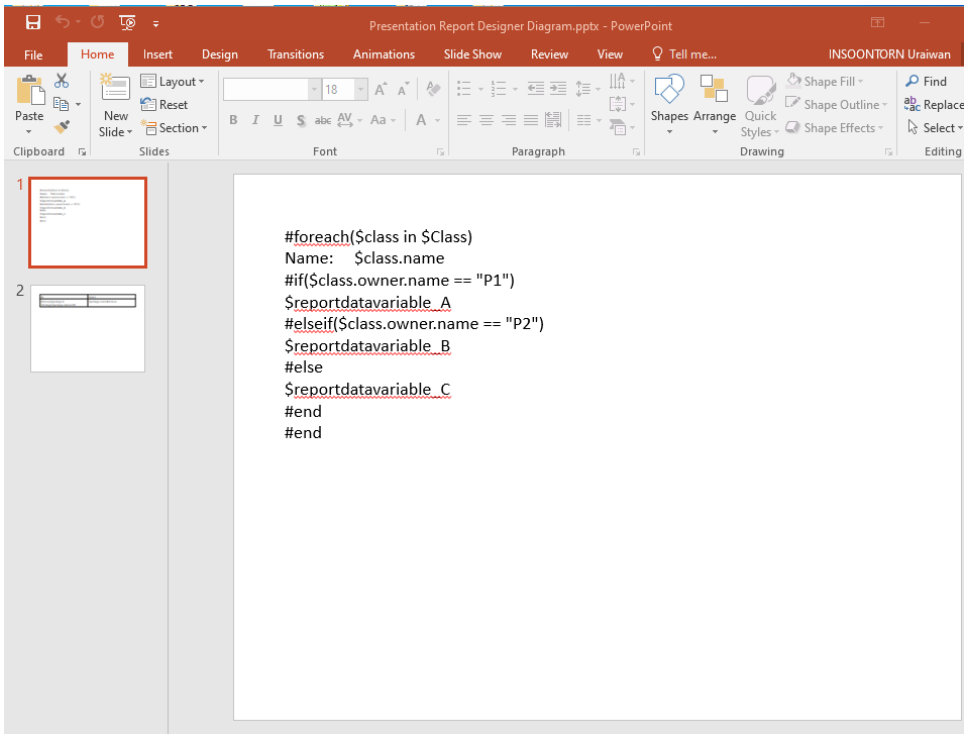
4. In the Containment tree, right-click **Presentation Report Designer Diagram** and select **Generate Template > PPTX Template** to generate the template.



#### Note

Generated templates get only symbols on the diagram. Elements in the Containment tree are not used to generate templates.

5. Refine more layouts, style, and code logic in Microsoft PowerPoint.
6. Add the complete template to Report Wizard.
7. Generate the report from the added template.



## Diagram elements

The Presentation Report Designer diagram provides many diagram elements represented in Velocity syntax/directive that can be created from the toolbar on the diagram. You can see diagram elements description in the [Document Report Designer diagram](#) page.