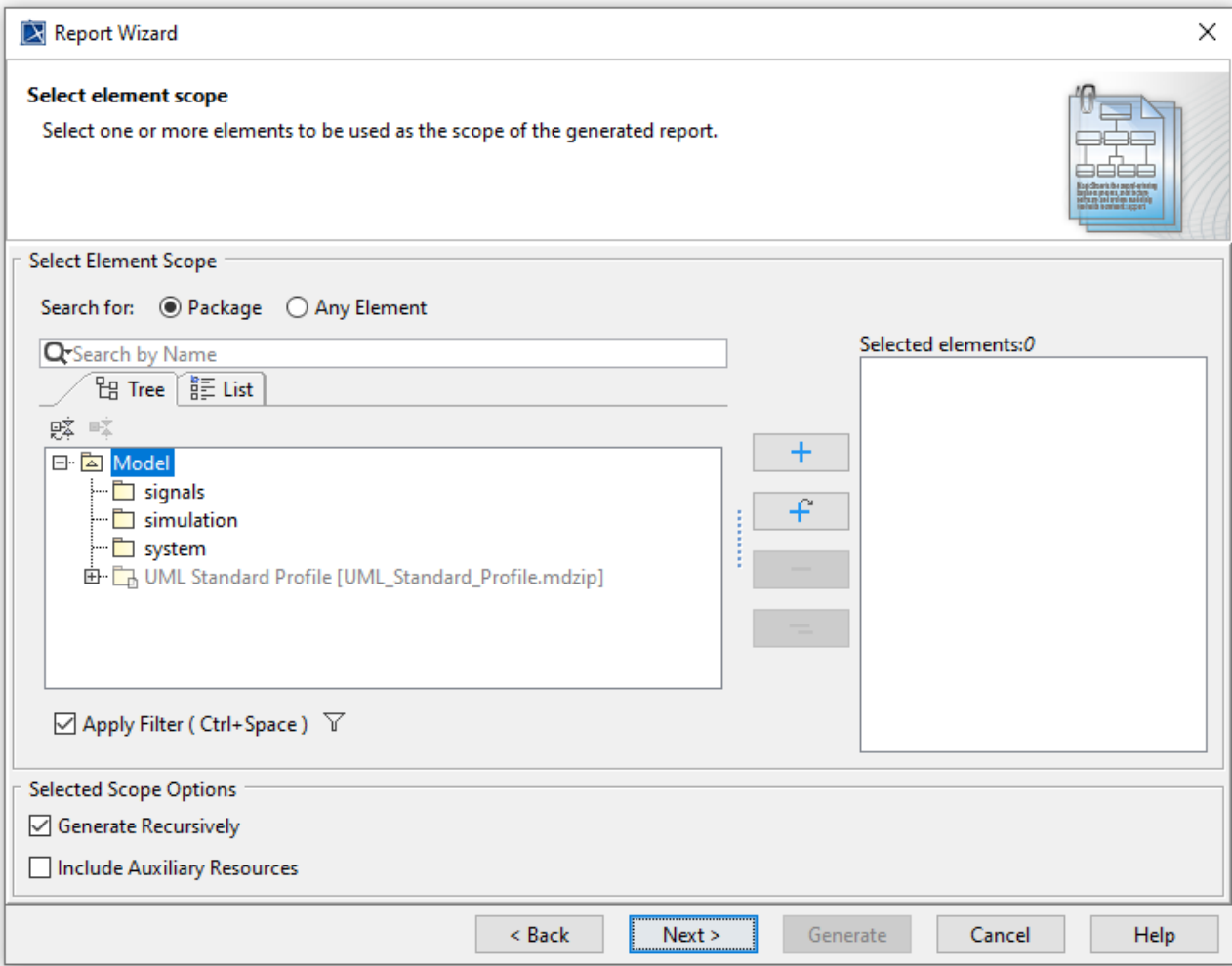






Select Element Scope pane

The **Select Element Scope** pane (see the figure below) allows you to select the scope of MagicDraw data to generate a report.



The Select Element Scope pane.

The table below describes the detail of each component in the **Select Element Scope** pane.



Component	Name description
Select Element Scope pane	A group for selecting an element scope.
Search for scope	Select Package for listing only Package elements in the tree. Select Any Element for listing any element in the tree.
Apply Filter option	Select to apply the filter to the tree.
Filter button	Select the filter options: Hide Uncommon Elements and Exclude Auxiliary Resources .
	Add the selected element in the tree.
	Recursively add the selected elements in the tree.
	Remove the selected scope element from the list.
	Remove all scope elements from the list.

Selected elements pane	List added element(s) in the tree.
Selected Scope Options	<ul style="list-style-type: none"> • Generate Recursively - Recursively generate elements from the selected scope elements. • Include Auxiliary Resources - Include auxiliary resources found in the selected scope elements.

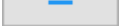
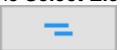
You can perform the following operations in the **Select Element Scope** pane:

- Add packages into the **Selected elements** list.
- Remove packages from the **Selected elements** list.
- Select or clear the **Generate Recursively** option.
- Include auxiliary resources.
- Show and search for package elements.

To add packages

- In the **Select Element Scope** pane (see the figure above), select the packages from the tree and click **Add**  or **Add Recursively**  to add them into the **Selected elements** list.

To remove packages

- In the **Select Element Scope** pane (see figure above), select the packages from the tree and click **Remove**  or **Remove All**  to remove them from the **Selected elements** list.

To select or clear the **Generate Recursively** option

- Select or clear the **Generate Recursively** check box (see the figure above).

To include auxiliary resources

- Select the **Include Auxiliary Resources** check box and add auxiliary resources into the **Selected elements** list (see the figure above).

To show and search for package elements

- In the **Search for** scope, select the **Package** option and enter the search keyword in the search field (see the figure above).



Tip

The figure above shows the **UML 2 Elements** package and the **Generate Recursively** option are selected. It means that the **UML 2 Elements** package and its subpackages will be generated in the report.