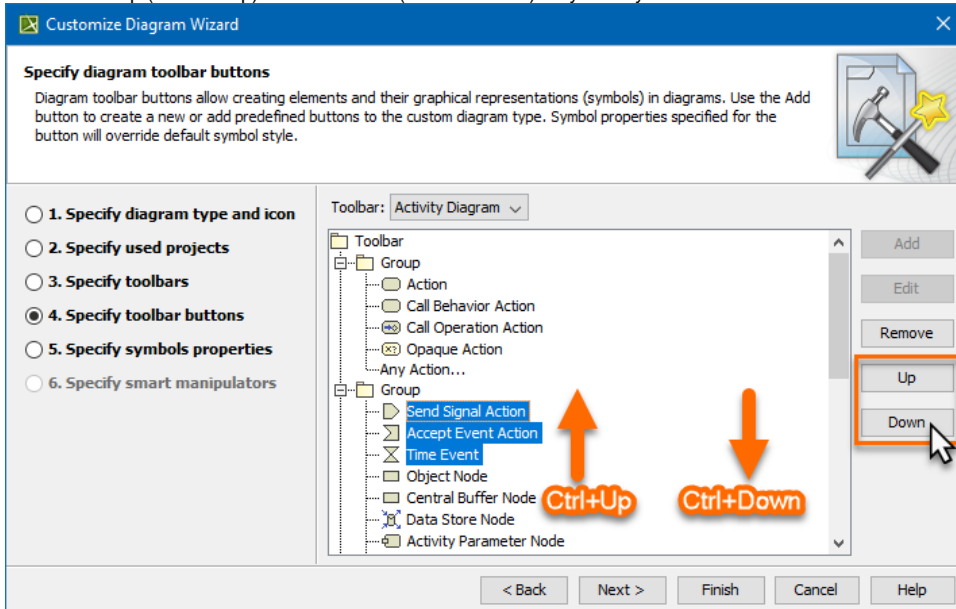


Reordering elements

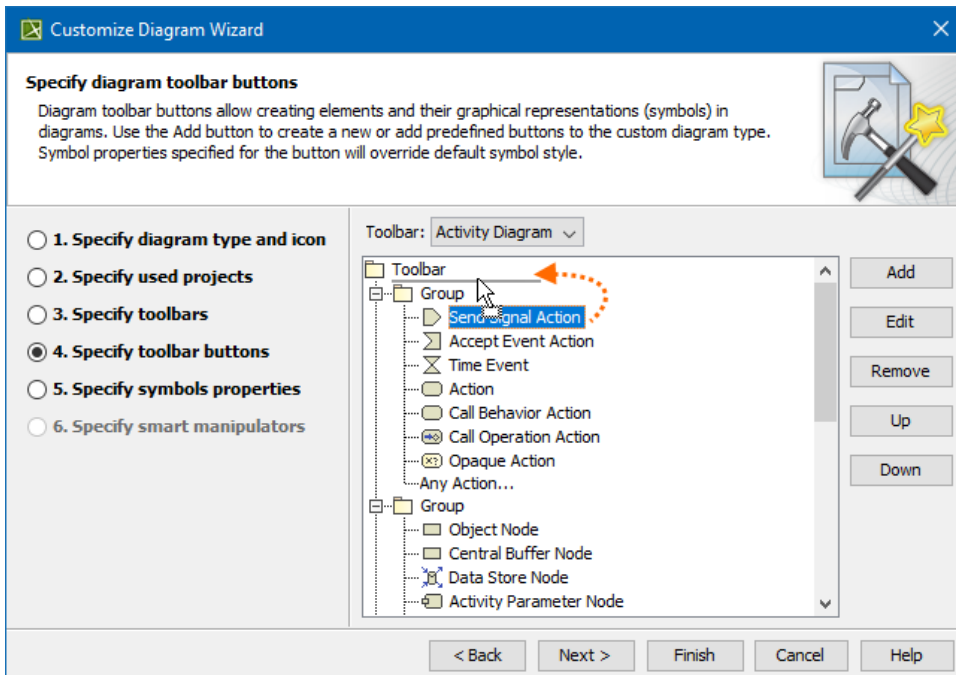
You can change the order of elements/properties presented in a list, tree, and Specification window, so if you need to move them, you can easily do so using one of the following methods:

To reorder elements in dialogs

1. Select one or more element(s) to move to the desired place.
2. Do one of the following:
 - Click the **Up** (to move up) or **Down** (to move down) buttons on the right side of the dialog
 - Press **Ctrl + Up** (to move up) or **Ctrl + Down** (to move down) on your keyboard



- Drag-and-drop the selected element(s)



If you need to move multiple elements, press **Ctrl** on your keyboard and click to select the elements to reorder.