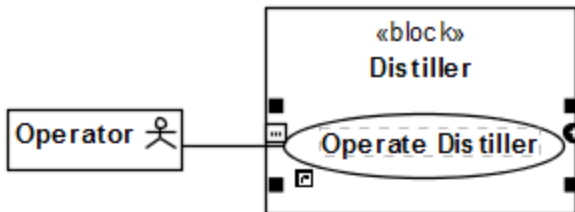


Specifying a Use Case subject

The subject of a Use Case represents a system under consideration to which that Use Case applies. The subject can be any element that may have a behavior, such as a Component or Class (SysML Block).

To specify the Use Case subject

1. Select the Use Case or its shape.
2. Drag it onto a Class, SysML Block, or Component shape. The Use Case becomes nested in that shape, and the appropriate model element is set as the Use Case subject.



Specification of UseCase Operate Distiller

Specification of UseCase properties

Specify properties of the selected UseCase in the properties specification table. Choose the Expert or All options from the Properties drop-down list to see more properties.

Operate Distiller

Documentation/Comments

Navigation/Hyperlinks

Usage in Diagrams

Use Case Scenario Sketch

Extension Points

Behaviors

Template Parameters

Inner Elements

Relations

Tags

Constraints

Traceability

Allocations

Actors

Operate Distiller

Classifier Behavior

Owned Behavior

Subject

Extend

Include

simple sequence(context Distiller)

Distiller [Distiller::Distiller Structur

Properties: All

Subject

The subjects to which this UseCase applies. Each subject or its parts realize all the UseCases that apply to it.

Type here to filter properties

Click the Load Profile button to load the UseCase Description Profile. The profile extends the Use Case description with additional properties.

Load Profile

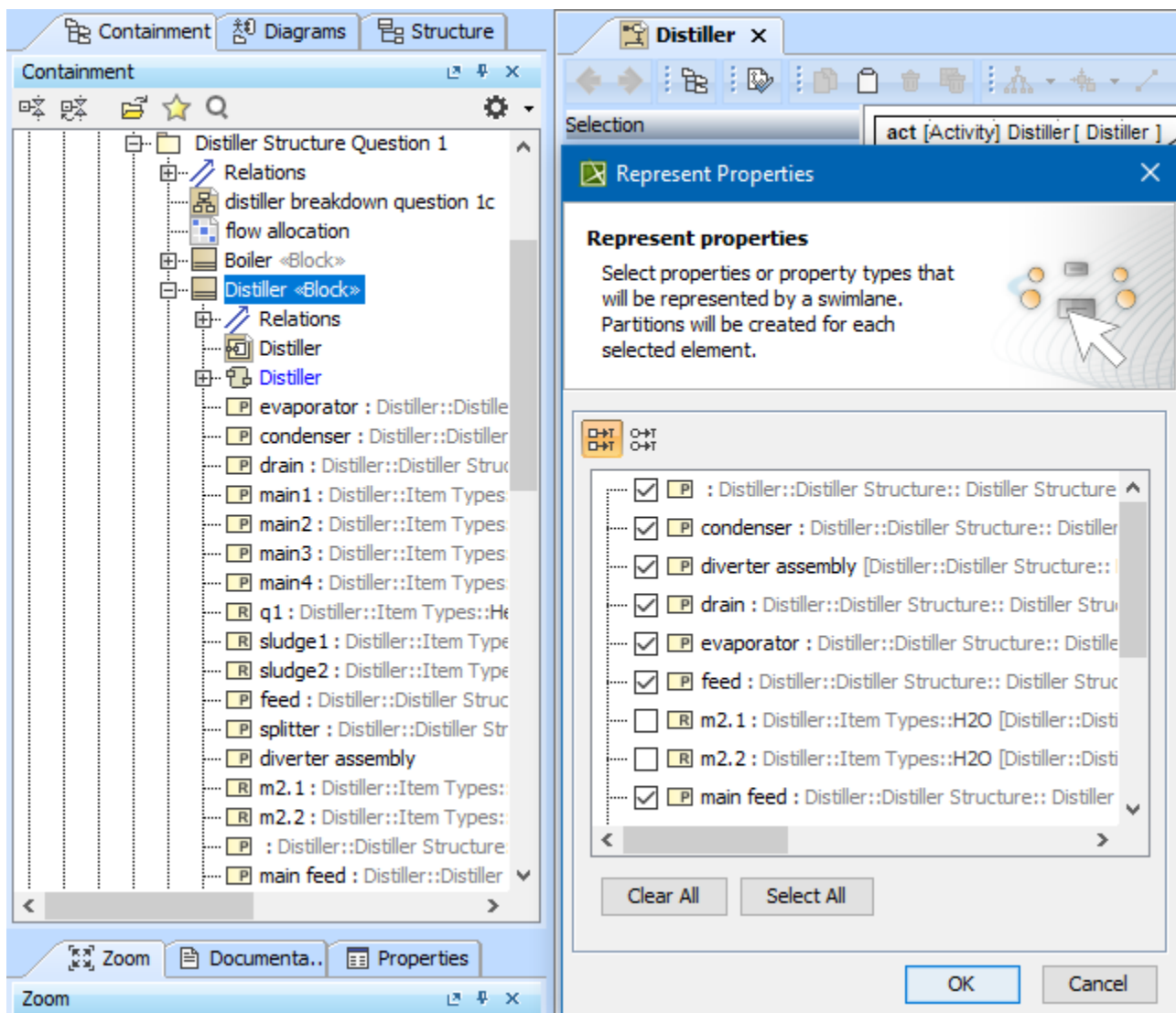
Close

Back

Forward

Help

Having a Use Case with the subject specified jumpstarts the creation of Swimlanes in the Activity diagram owned by that Use Case. In this case, you can select the subject properties you wish to be represented by the Swimlanes on that diagram.



Related pages

- [Extension Point](#)
- [Specifying a Use Case subject](#)
- [Use Case description profile](#)
- [Use Case Scenario sketch](#)