

# Specifying scope

When you define a scope for the row or a column, you can:

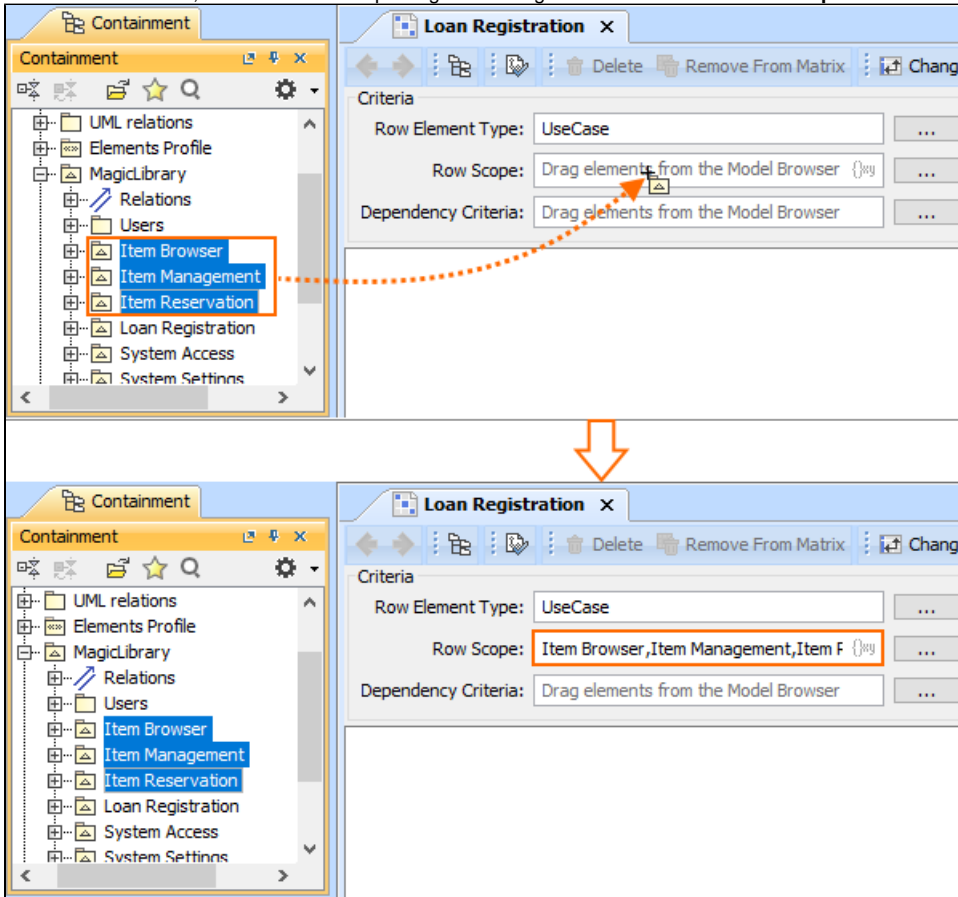
- Specify the row/column scope, dragging selected packages on the scope box
- Define expressions for building personalized hierarchy trees
- Specify the row/column scope query, building a list of elements related through the defined criteria

## Specify the row/column scope

To specify the row/column scope

Do one of the following:

- In the [Model Browser](#), select one or more packages and drag them to the **Row/Column Scope** box in the **Criteria** area.



- For the multiple selection Press and hold Shift or Ctrl.
- If you want to add additional elements, press and hold Ctrl while dragging the elements to the **Row/Column Scope** box.

- Click the button next to the **Row/Column Scope** box and in the open dialog select the needed packages. Click **OK**.
- Open the matrix [Specification window](#), click the **Row/Column Scope** property value cell, then click the button, and in the open dialog select the needed packages. Click **Close**.

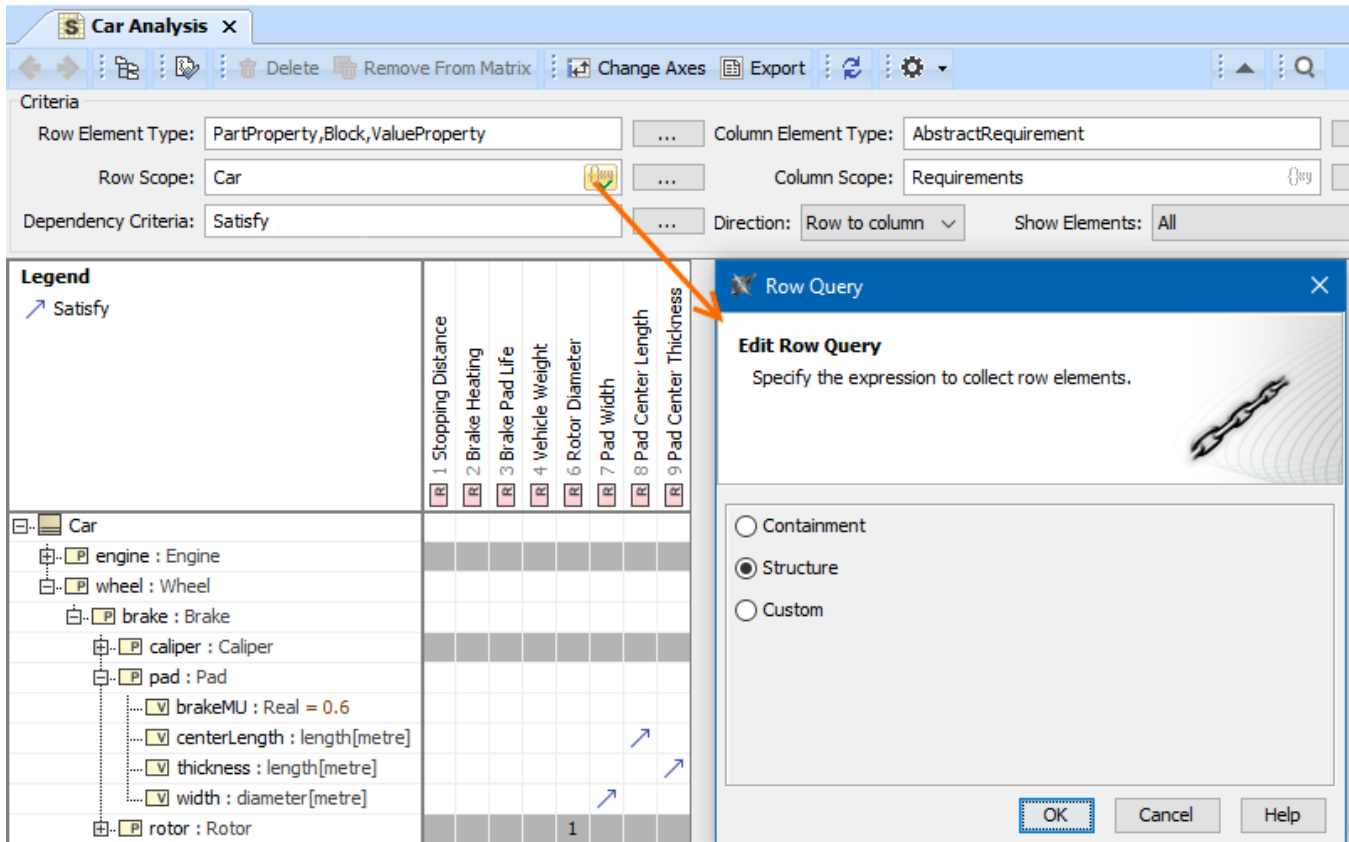
## Define expressions for building personalized hierarchy trees

You can specify the criterion for building a personalized Row/Column hierarchy tree in matrices by choosing from the following tree-view options:

- Select **Containment** to display the decomposition of elements related through the Containment relationship.
- Select **Structure** to display the decomposition of Part Properties related through the Composition relationship.
- Select **Custom** to display the decomposition of elements related through any criteria of your choice.

By selecting Structure, you can build a custom tree-like view for the rows and columns of the matrix. Currently it is possible to build a tree hierarchy by specifying your own criteria. You can select the predefined Structure criteria which builds the same hierarchy as in the Structure Tree in Model Browser.

Select Custom if you need to collect elements that are not necessarily owned by the same package. You can specify the query in the **Row/Column Query** dialog and see the results added to it immediately.

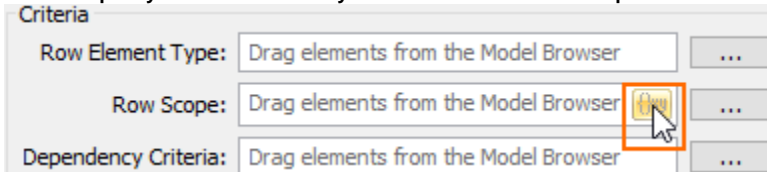


Specifying criteria for building a personalized tree-view in a matrix

## Specify the row/column scope query

To specify the row/column scope query

1. Click the **Specify Row/Column Query** icon in the **Row/Column Scope** field.



2. In the Row/Column Query dialog, select one of the following:

- **Containment.** Select if you want that the row/column elements would be displayed as in the Containment tree. Owned elements will be collected recursively starting from the elements specified as scope values.
- **Structure.** Select if you want that the row/column elements would be displayed as in the [Structure tree](#). This option is available only when the SysML Plugin is installed.
- **Custom.** Select if you want to make your own adjustments. Select the Build Hierarchy check box to recursively execute the specified expression for building multilevel hierarchy starting from the scope as the root.



If you have selected **Custom**, [specify the expression](#).

☐ Containment  
☐ Structure  
☒ Custom

Custom  
Simple Navigation  
Metachain Navigation  
Find  
Implied Relation  
Create operation...

**Simple Navigation** ⓘ

Edit Remove

| Relation Criterion            | Is Applied                     | Direction |
|-------------------------------|--------------------------------|-----------|
| Aggregation                   | <input type="checkbox"/> false |           |
| Allocate [Abstraction]        | <input type="checkbox"/> false |           |
| assembly [Dependency]         | <input type="checkbox"/> false |           |
| Association                   | <input type="checkbox"/> false |           |
| Association Class             | <input type="checkbox"/> false |           |
| Binding Connector [Connector] | <input type="checkbox"/> false |           |
| Call [Usage]                  | <input type="checkbox"/> false |           |
| Communication Path            | <input type="checkbox"/> false |           |
| Component Realization         | <input type="checkbox"/> false |           |
| Composition                   | <input type="checkbox"/> false |           |

Q Type here to filter properties

☒ Show Relations Criteria Available Only for Context Clear All

☒ Build Hierarchy ⓘ

☒ Expert

OK Cancel Help Evaluation Mode

3. Click **OK**.