

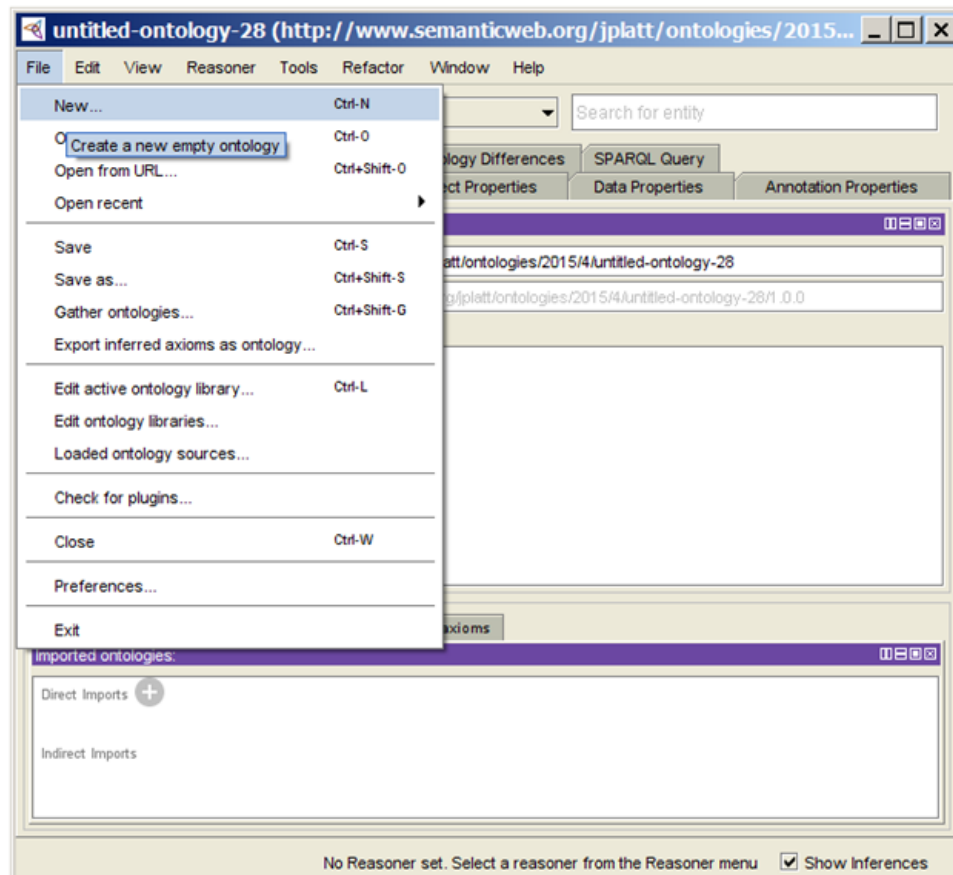
# Creating an XML catalog file

An XML catalog describes the mapping between external entity references and locally cached equivalents for an XML external resource.

You can create an XML catalog file using the application **Protégé**[\[1\]](#). The version of **Protégé** used in these instructions is version 4.3.0.

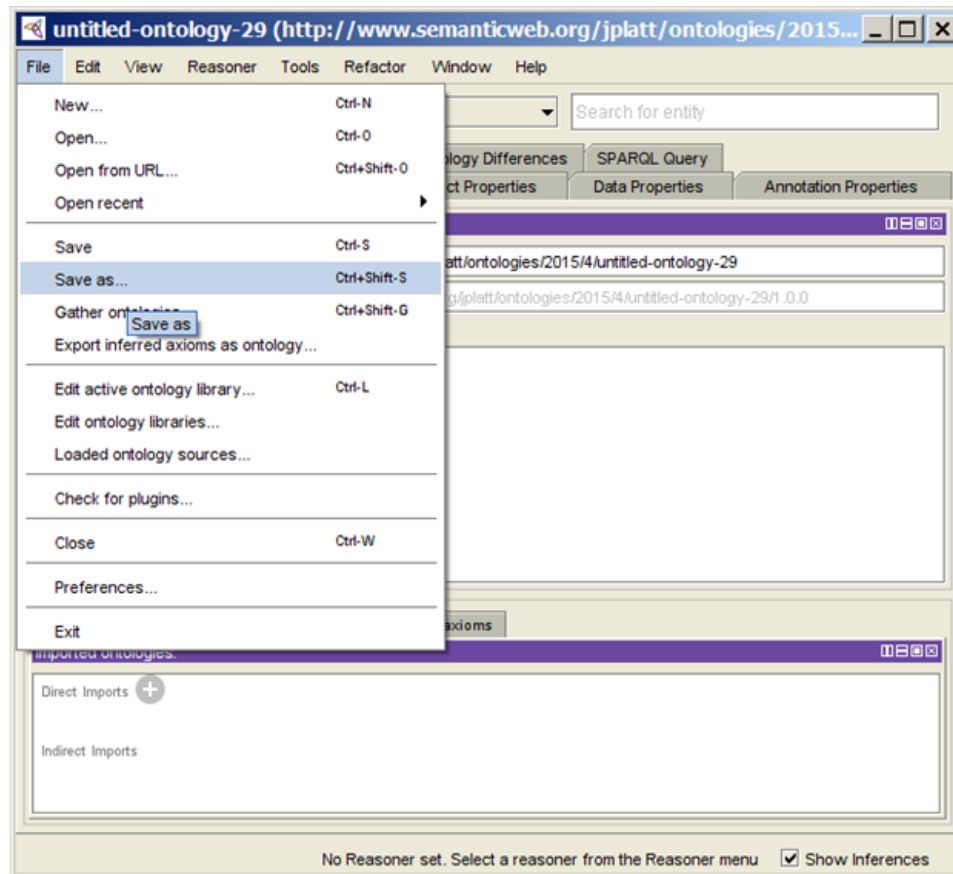
To create an XML catalog file for a locally cached set of external ontologies

1. Open **Protégé**.
2. Select **File > New**.



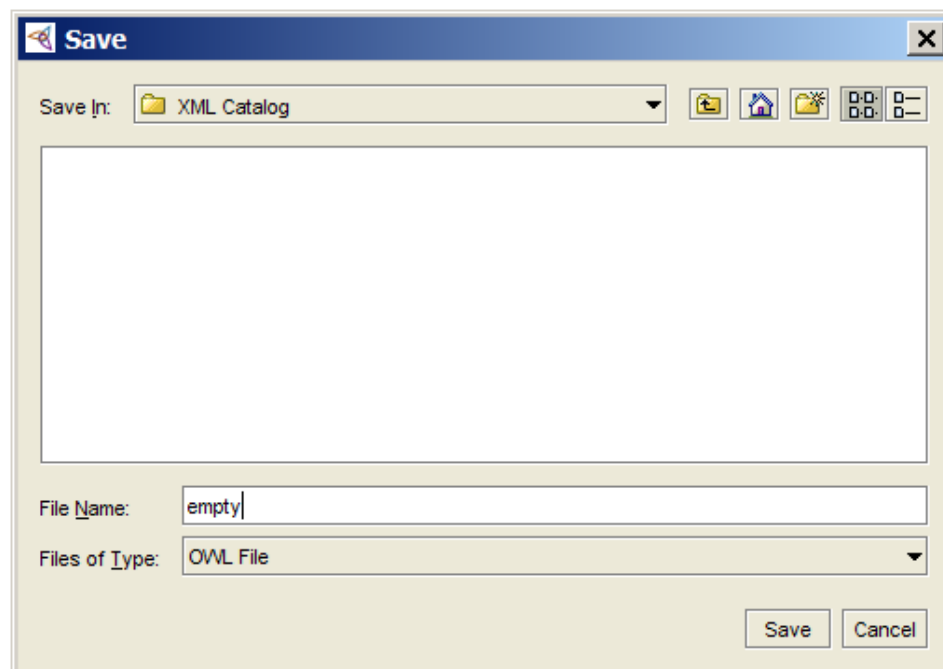
Creating an OWL ontology in Protégé application.

3. Select **Save as**.



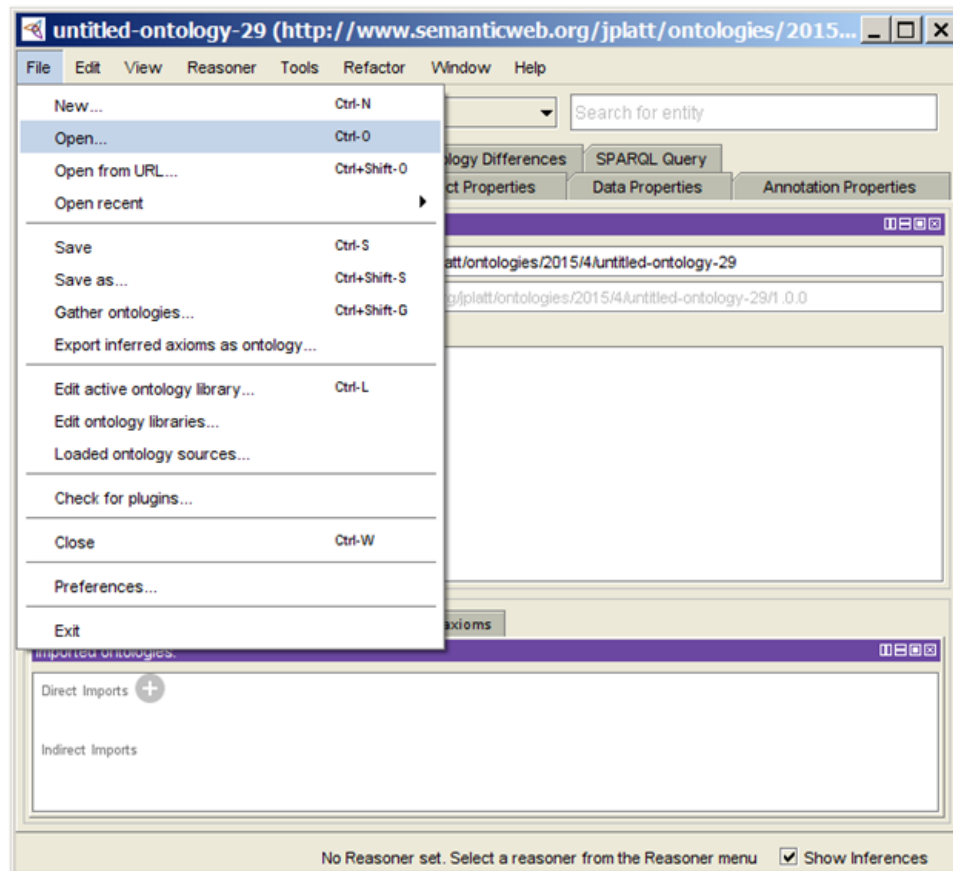
Saving an OWL ontology in Protégé.

4. Navigate to a folder location.
5. Name the empty ontology.
6. Click **Save**.



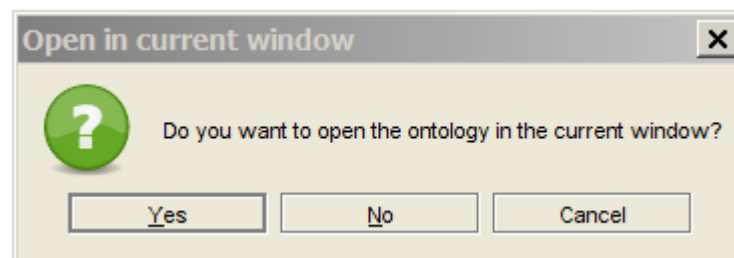
Saving the OWL ontology file to a selected location.

7. Click **File > Open**.



Opening the OWL ontology in Protégé.

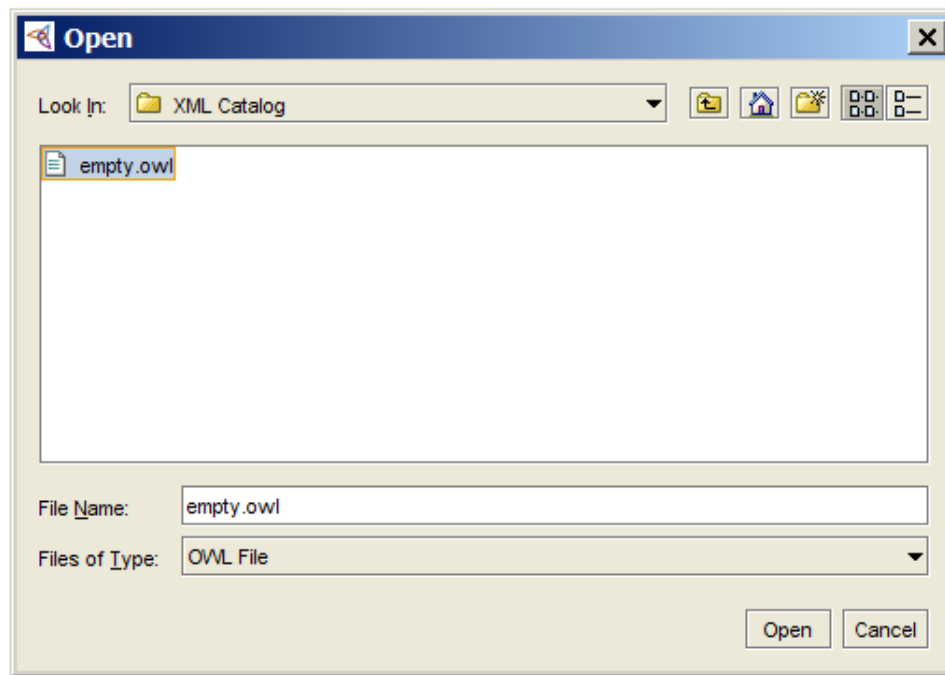
8. Click **Yes**.



Opening the OWL ontology in the current window option.

9. Select the newly created ontology.

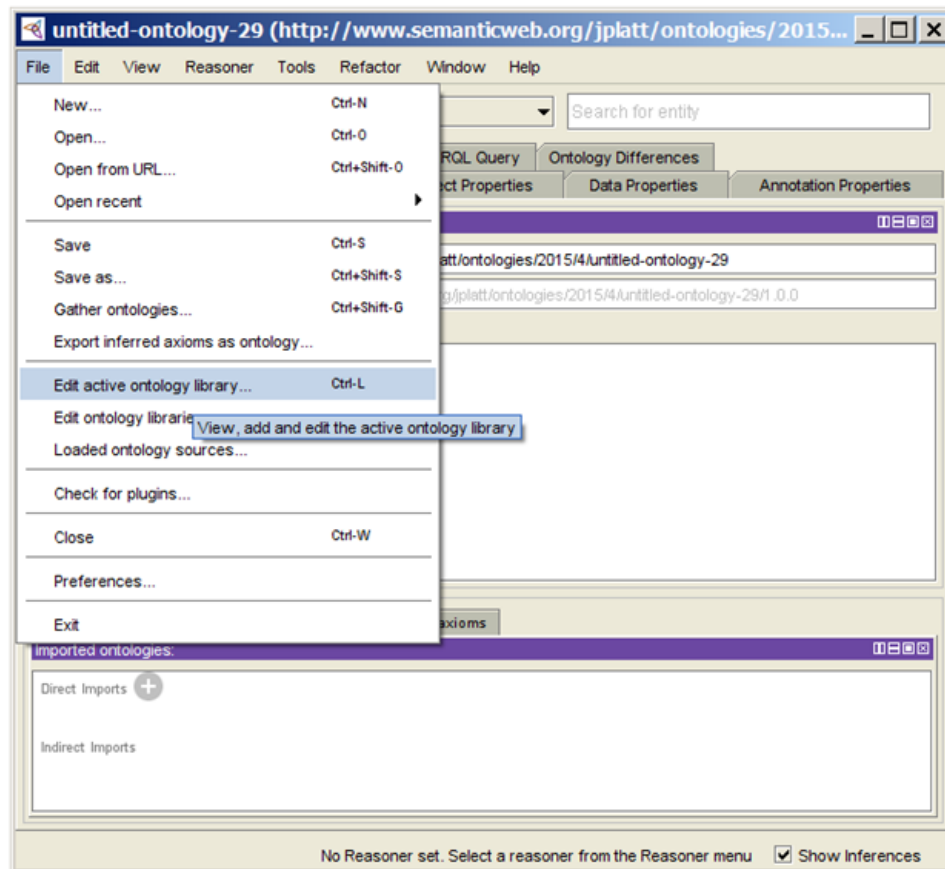
10. Click **Open**.



Selecting an OWL ontology to open.

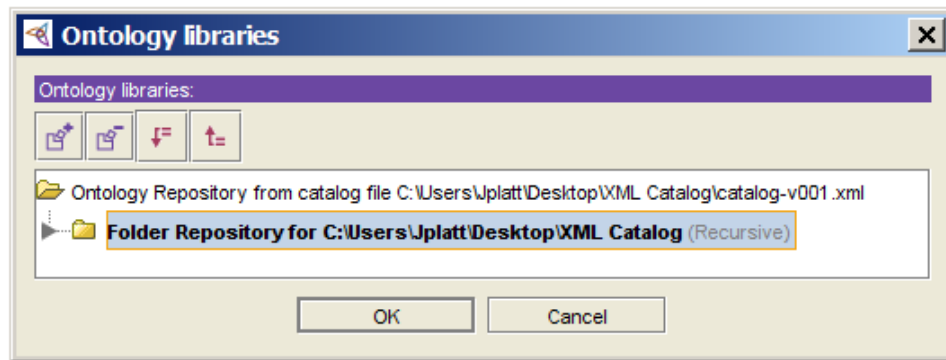
To create an XML catalog file for the desired locally cached set of external ontologies:

1. Click **File > Edit active ontology library**.



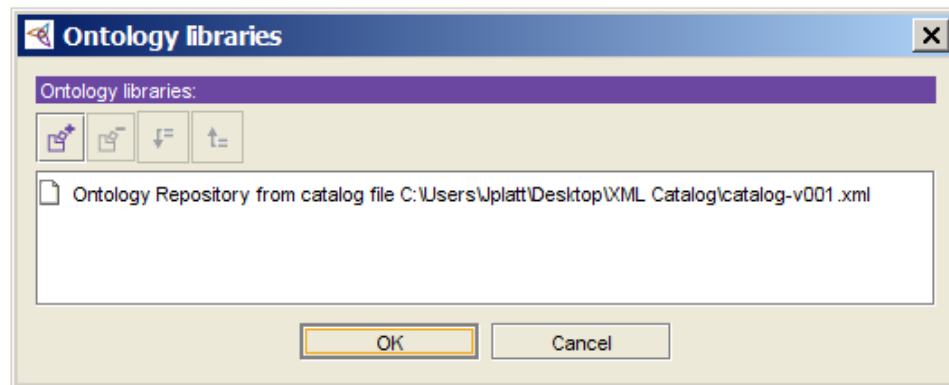
Creating an XML catalog file in Protégé.

2. Click on the **Folder Repository** for the empty ontology.
3. Click Delete (-).



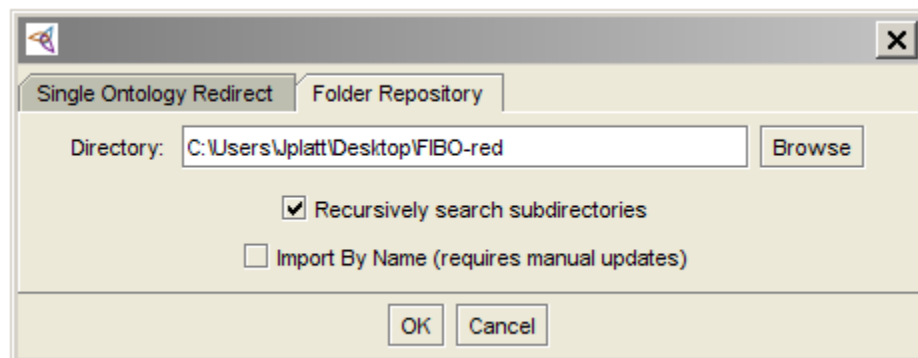
Deleting a folder repository.

4. Click Add (+).



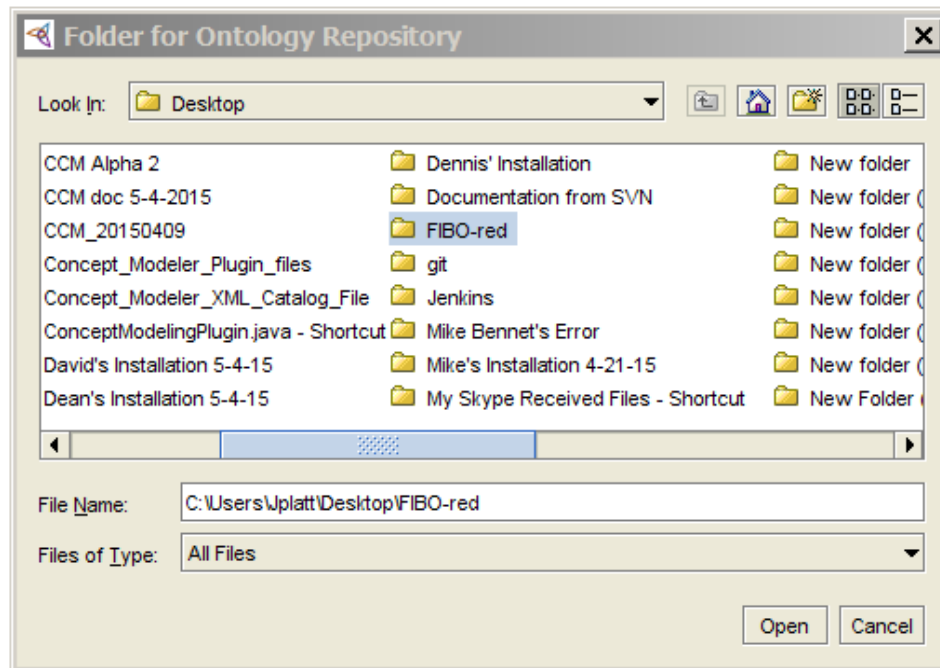
Adding a folder repository.

5. Click on **Folder Repository**.
6. Select **Recursively search subdirectories**.



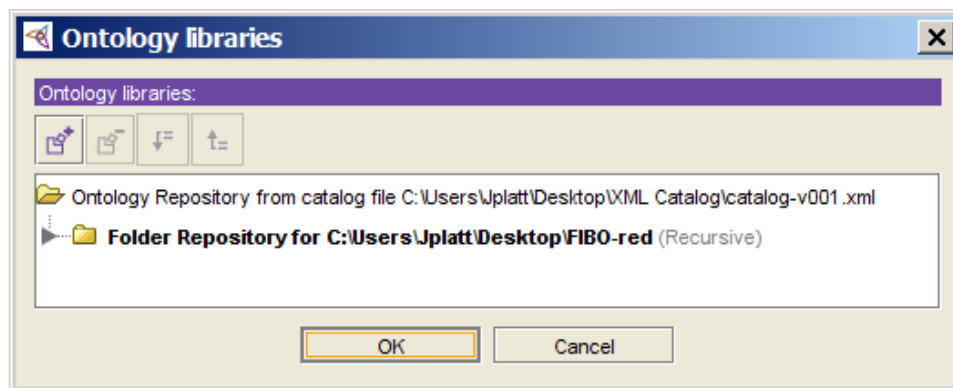
Locating for a folder repository.

7. Select the desired folder.
8. Click **Open**.



Selecting a folder repository.

9. Click **OK**.



The new folder repository is added.

[1] **Protégé** is a free, open-source ontology editor, and a framework for building knowledge management systems.

#### Related page

- [Usage](#)