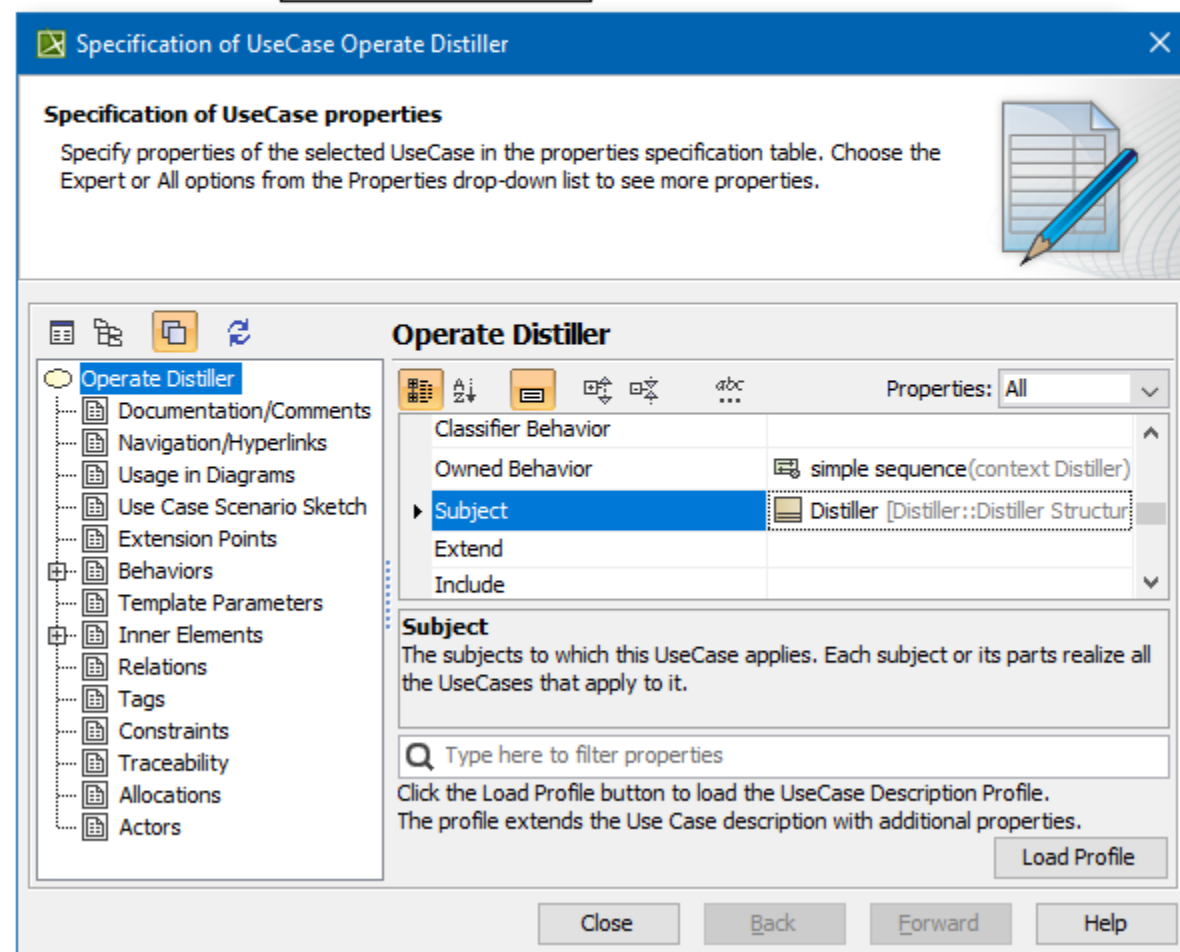


The subject of a Use Case represents a system under consideration to which that Use Case applies. The subject can be any element that may have a behavior, such as a Component or Class (SysML Block).

1. Select the Use Case or its shape.
2. Drag it onto a Class, SysML Block, or Component shape. The Use Case becomes nested in that shape, and the appropriate model element is set as the Use Case subject.



Having a Use Case with the subject specified jumpstarts the creation of Swimlanes in the Activity diagram owned by that Use Case. In this case, you can select the subject properties you wish to be represented by the Swimlanes on that diagram.

Containment Diagrams Structure

Containment

Distiller Structure Question 1

- Relations
- distiller breakdown question 1c
- flow allocation
- Boiler «Block»
- Distiller «Block»
  - Relations
  - Distiller
    - Distiller
      - evaporator : Distiller::Distiller
      - condenser : Distiller::Distiller
      - drain : Distiller::Distiller Structure
      - main1 : Distiller::Item Types
      - main2 : Distiller::Item Types
      - main3 : Distiller::Item Types
      - main4 : Distiller::Item Types
      - q1 : Distiller::Item Types::H2O
      - sludge1 : Distiller::Item Type
      - sludge2 : Distiller::Item Type
      - feed : Distiller::Distiller Struc
      - splitter : Distiller::Distiller Str
      - diverter assembly
      - m2.1 : Distiller::Item Types::
      - m2.2 : Distiller::Item Types::
      - : Distiller::Distiller Structure
      - main feed : Distiller::Distiller

Zoom Documenta... Properties

Zoom


Distiller x

Selection act [Activity] Distiller [ Distiller ]

Represent Properties

**Represent properties**

Select properties or property types that will be represented by a swimlane. Partitions will be created for each selected element.



☒ P : Distiller::Distiller Structure:: Distiller Structure

☒ P condenser : Distiller::Distiller Structure:: Distiller

☒ P diverter assembly [Distiller::Distiller Structure::

☒ P drain : Distiller::Distiller Structure:: Distiller Stru

☒ P evaporator : Distiller::Distiller Structure:: Distille

☒ P feed : Distiller::Distiller Structure:: Distiller Struc

☐ R m2.1 : Distiller::Item Types::H2O [Distiller::Disti

☐ R m2.2 : Distiller::Item Types::H2O [Distiller::Disti

☒ P main feed : Distiller::Distiller Structure:: Distiller

Clear All Select All

OK Cancel