

Action Behavior is not allocated

Abbreviation

ActionBehavior

Description

This rule checks to see if the action or behavior is allocated to the Allocated Activity Partition when the swimlane's **Allocation Mode** is **Usage**.

Severity

warning

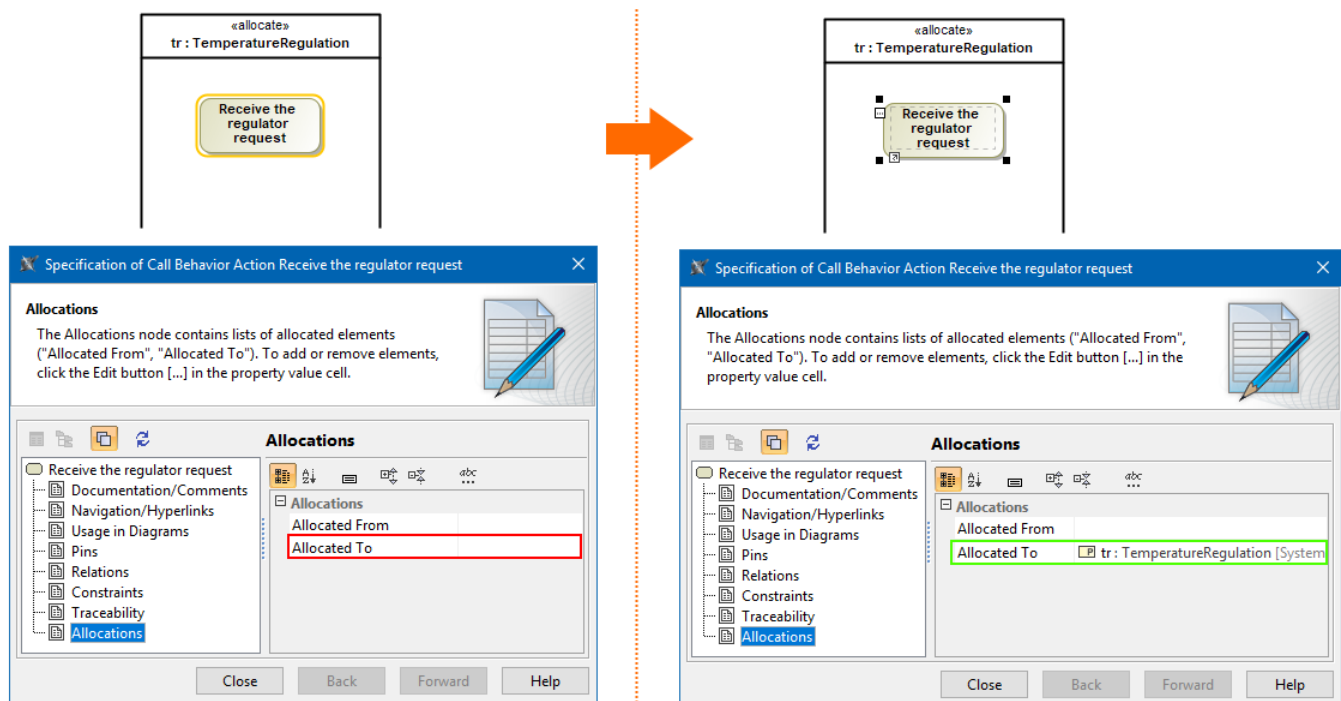
Constrained Element

Action

Solvers

Allocate Action - sets the same element in the **Allocated To** property value as defined in the Allocated Activity Partition.

Example



Receive the regulator request Action is allocated to *tr* Part Property.