

Mapping solutions and issues

Removed tag added to ToDo property

Condition::conditionKind tag was removed, so after the migration it will be added into ToDo property in the Specification window of the Condition element.

Changed Property Types

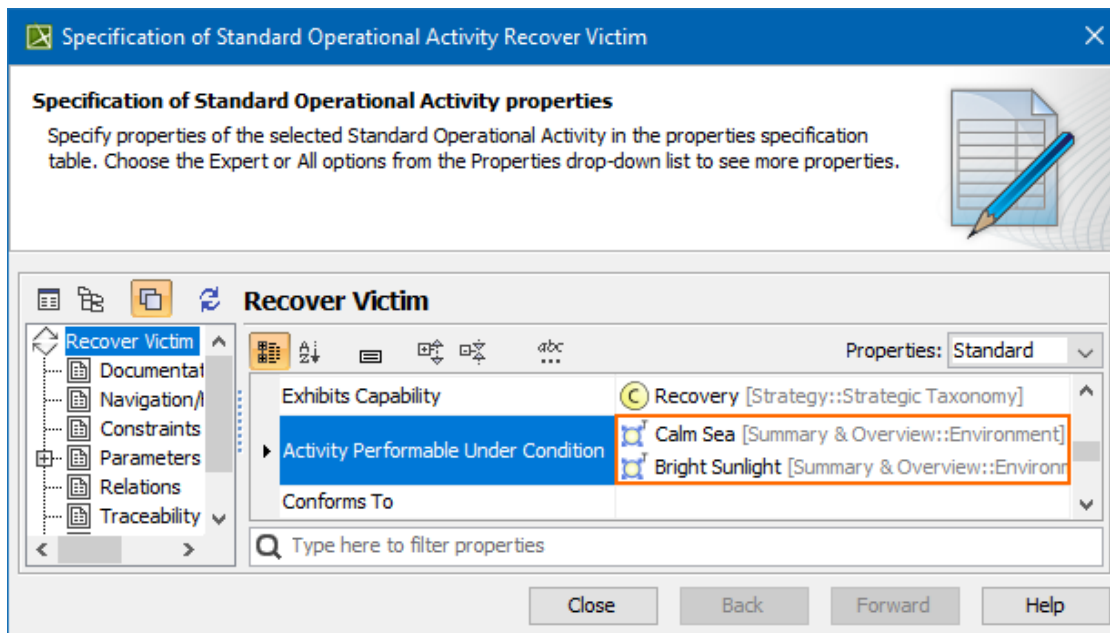
- [Changes for Condition and Environment](#)
- [Changes for Doctrine](#)

Changes for Condition and Environment

In earlier versions, the Activity Performable Under Condition property (owned by Activity) had the Condition as its value. After the migration, the newly created Actual Condition with the Condition set as a type, replaces this property.

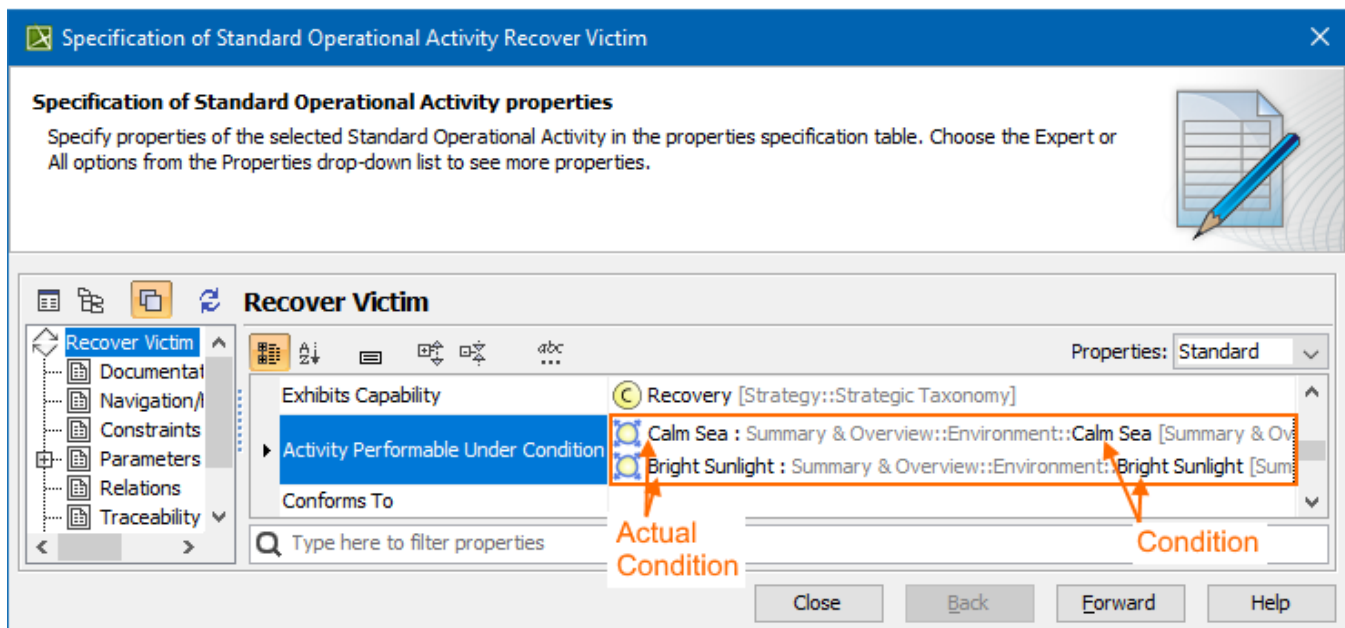
The same is valid for :

- Environmental Context (owned by Measurement) value Condition.
- Required Environment (owned by Location Holder) value. If the value was Environment, the Actual Environment is created. If the value was Condition, the Actual Condition is created.



Earlier versions

UAF 1.1 version



Changes for Doctrine

In earlier versions the Doctrine property (owned by Capability Configuration) had Constraint for its value. In UAF 1.1 Constraint is replaced by Standard Operational Activity. After the migration, Capability Configuration is set as constrainedElement to Constraint Except if Constraint is Operational Constraint or Service Policy.

The SecurityProperty renamed

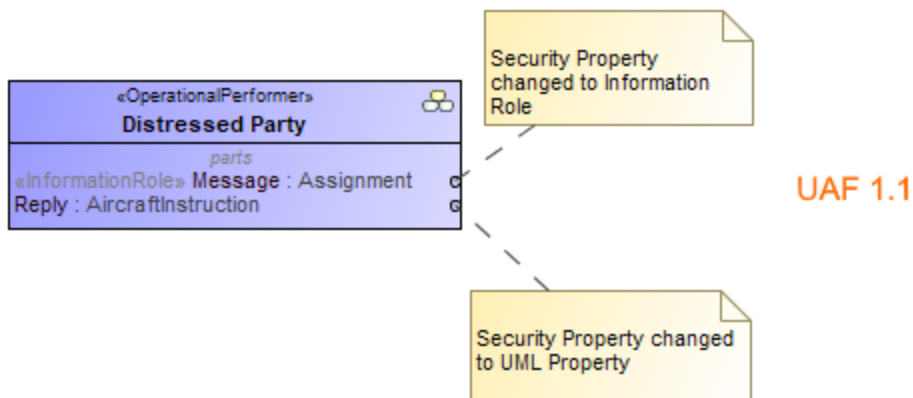
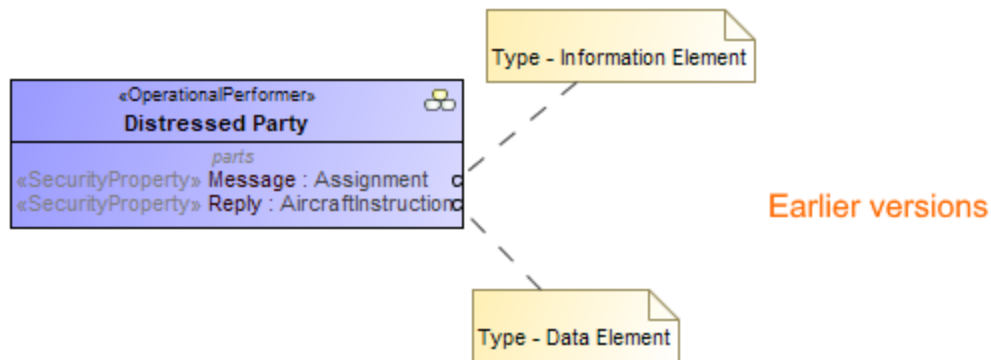
In UAF 1.1, the Security Property is renamed to Information Role and the new Data Role is implemented. The Information Role is used by the Operational Assets and the Data Role is used by the Resource Assets.



- **Operational Asset** - An abstract element used to group the elements of Operational Agent and Information Element.
- **Resource Asset** - An abstract element used to group the elements of Resource Performer and Data Element.

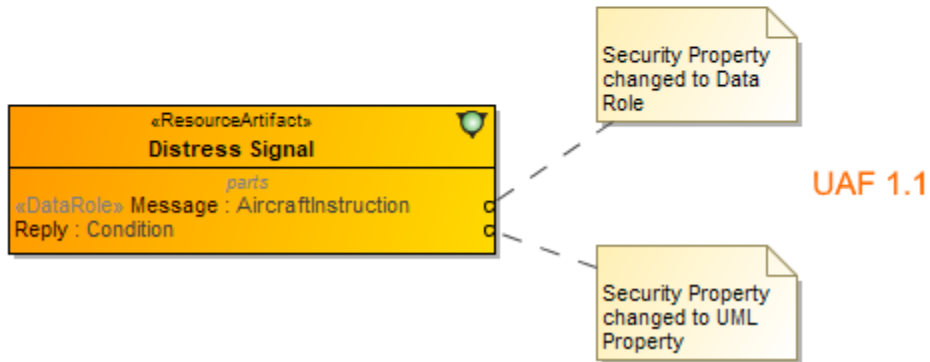
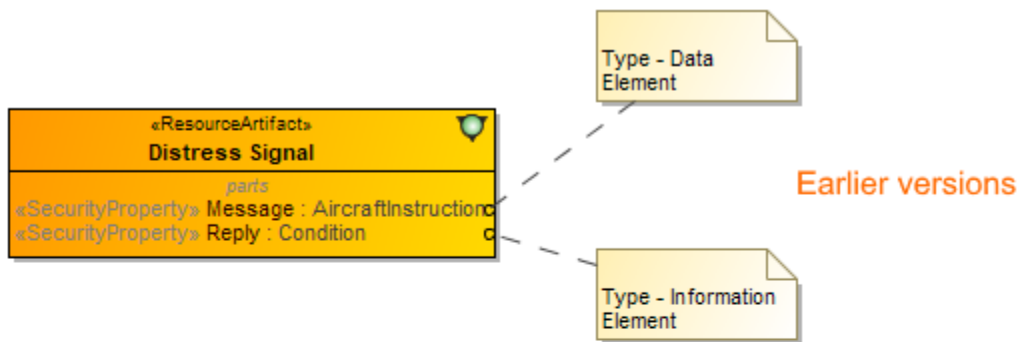
If Operational Agent and Information Element (in UAF 1.1 grouped by Operational Asset) had a Security Property set, after the migration the Security Property will be changed to:

- Information Role, if the type of the Security Property was any of the Operational Asset specializations.
- Simple UML property, if the type of the Security Property was Resource Asset.



If Resource Performer and Data Element (in UAF 1.1 grouped by Resource Asset) had a Security Property set, after the migration the Security Property will be changed to:

- Data Role, if the type of the Security Property was Resource Asset.
- Simple UML property, if the type of the Security Property was Operational Asset.



Known Resource exception

The Known Resource is both: Resource Asset and Operational Asset. After the migration, the Security Property (owned by the Know Resource) is changed depending on its type:

- If the type was Data Element, the Security Property becomes Data Role.
- If the type was Information Element, the Security Property becomes Information Role.