


Diagram Creation Wizard

The **Diagram Creation Wizard** is used to create the following diagrams:

- [CV-3 Capability Phasing](#) (DoDAF)
- [PV-2 Project Timelines](#) (DoDAF)
- [AcV-2 Programme Timelines](#) (MODAF)
- [StV-3 Capability Phasing](#) (MODAF)
- [NPV-1 Programme Portfolio Relationships](#) (NAF v.3)
- [NCV-5 Capability to Organisational Deployment Mapping](#) (NAF v.3)
- [Lr Lines of Development](#) (NAF v.4)
- [Cr Capability Roadmap](#) (NAF v.4)
- [Personnel Availability Gantt Chart](#)
- [Actual Enterprise Phases Gantt Chart](#)

The name of this wizard depends on particular diagram name: **<diagram name> Creation Wizard**:

To open the **Diagram Creation Wizard**

- **PV-2 Creation Wizard**

1. **DoDAF-2 Creation Wizard**

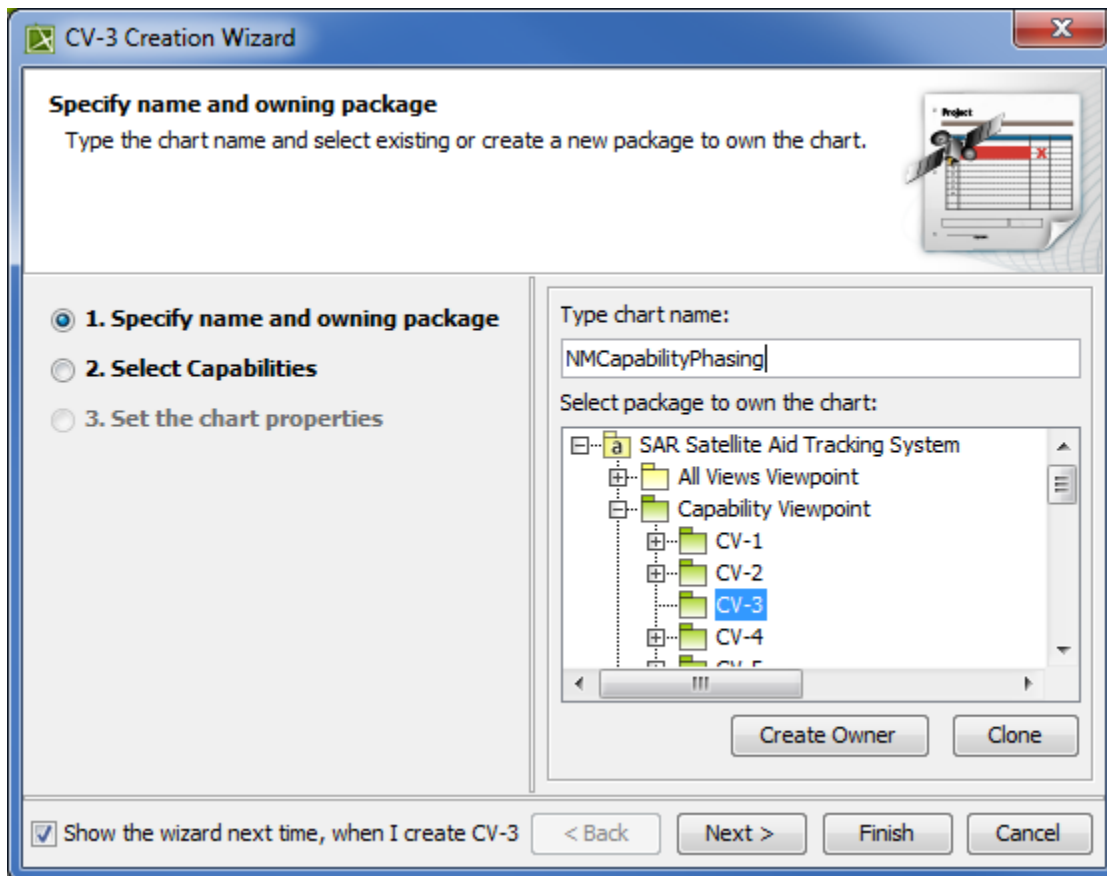
- Press Ctrl+N.
- **StV-3 Creation Wizard**
 - From the Main Menu, select **Diagrams > Create Diagram**.
- **NPV-1 Creation Wizard**
 - Right-click the **<view name> Package** and select **Create Diagram > <diagram name>**.
- **NCV-5 Creation Wizard**
 - In the main toolbar, click **Create Diagram** and in the opened window, search for the needed diagram.
- **Actual Enterprise Phases Gantt Chart Creation Wizard**

The wizard **Lines of Development Creation Wizard**

- **Cr Capability Roadmap Creation Wizard**
- 1 [Name and owning package specification](#)
- 2 [Capability selection](#)
- 3 [Actual Enterprise Phases](#)

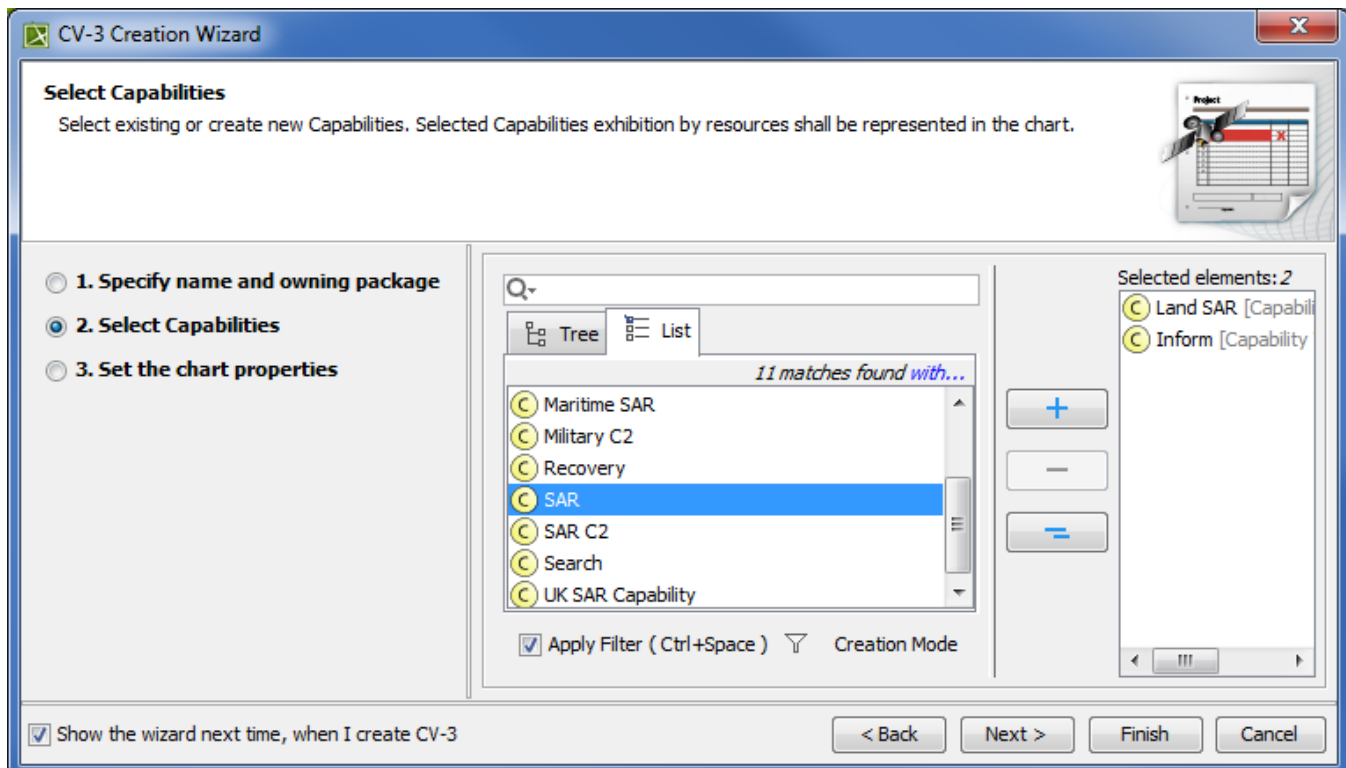
Name and owning package specification



In this step, you can specify the diagram name and select or create the owning package. If you want to create a new owning package, use the **Create Owner** button. Also, you can clone an existing package by clicking the **Clone** button.



Capability selection

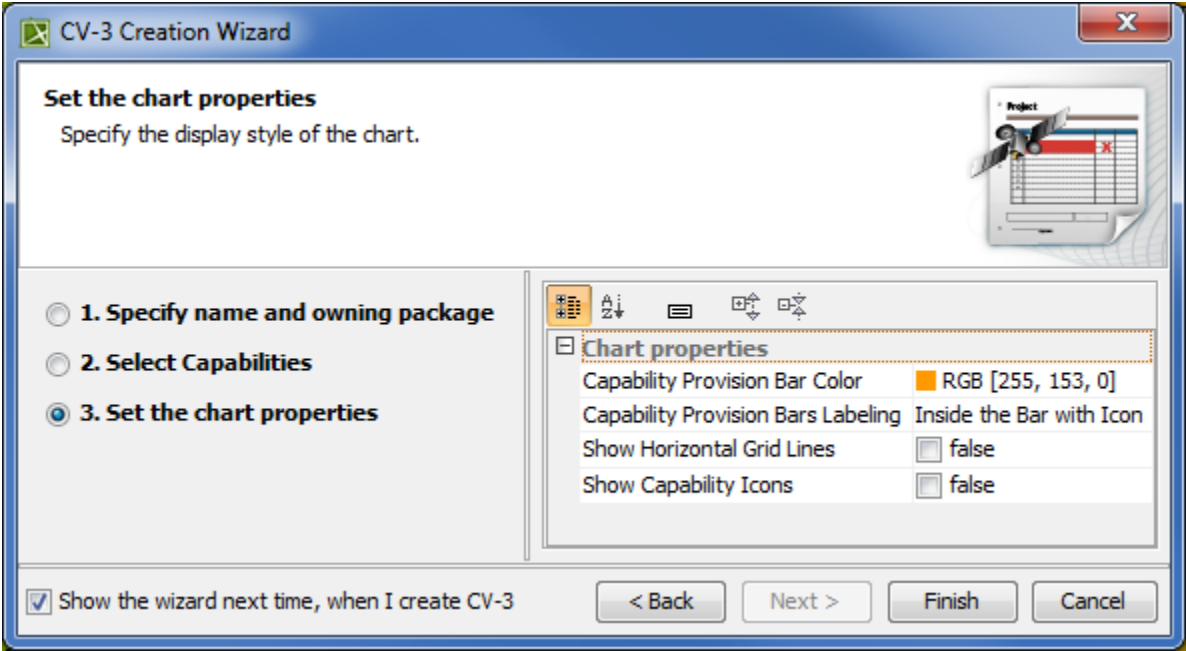
In this step, you can select Capabilities from the list.




Button	Description
	Selects a Capability. <div> Alternatively, double-click the Capability.</div>
	Removes a Capability.
	Removes all Capabilities.

The chart property setting

In this step, you can set the display style of the chart.



 If you do not wish to use this wizard next time, clear the **Show the wizard next time, when I create <diagram name>** check box.

To restore the usage of the **Diagram Creation Wizard**

Related procedures

- [Creating Lr Lines of Development. Lr Gantt chart](#)
- [Creating Gantt diagram](#)
- [Creating CV-3 diagram](#)
- [Creating Environment Options](#) dialog select the **UAF** options group.
- In the General properties, set the **Show PV-2/AcV-2/NPV-1 Creation Wizard each Time Creating New Chart** property value to *true*.