
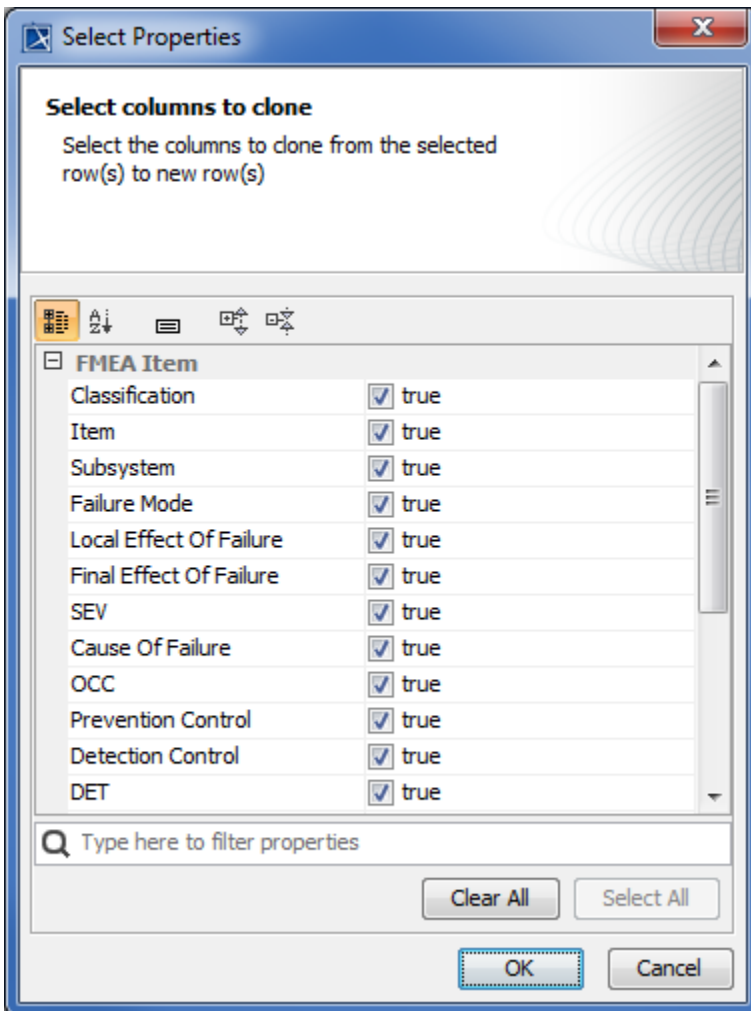


Cloning FMEA Table rows

Usually, FMEA Tables contain a number of rows that only slightly differ from each other. To create new rows more quickly, you can clone existing FMEA Table rows with their column values. The cloning feature allows you to clone one or multiple rows at a time, and select which column values should be cloned.

To clone existing FMEA table rows

1. Select The FMEA Table row(s) you want to clone. To select multiple rows, hold down the Ctrl key. If you want to select several consecutive rows, select the first row in a sequence, then hold down the Shift key, and select the last row in a sequence.
2. Do one of the following:
 - In the table toolbar, click  **Clone Row**.
 - Right-click the selected rows, and, from the menu, select **Clone Row**.
3. In the **Select Properties** dialog, select the columns you would like to clone. By default, all the columns are selected, as shown in the figure below. To clear the check boxes of all table columns, click **Clear All**, and, to select all table columns, click **Select All**.



4. Click **OK**.

After following the procedure described above, the selected rows of an FMEA Table are cloned reusing the values of the columns selected in the **Select Properties** dialog. As a result, new FMEA Items are created in the package specified as the scope of an FMEA Table, and new table rows (clones) are added for each new FMEA Item. By default, the names of new FMEA Items are the same as the names of the FMEA Items described in the source rows with the word *clone* added as a suffix. See the *Name* column of the sample FMEA Table displayed below.

| # | Id | Name | Classification | Item | Subsystem | Failure Mode | Local Effect Of Failure | Final Effect Of Failure |
|---|-----|---------|----------------|-----------------------|-----------|--------------------------|---|-------------------------|
| 1 | F-1 | F1 | electrical | battery : Design::... | Pump | Unable to be charged | | Underdose or overdose |
| 2 | F-2 | F2 | electrical | battery : Design::... | Pump | Voltage error | | Therapy delay |
| 3 | F-7 | F2 done | electrical | battery : Design::... | Pump | Voltage error | | Therapy delay |
| 4 | F-3 | F3 | electrical | battery : Design::... | Pump | Unable to be charged | | Therapy delay |
| 5 | F-4 | F4 | electrical | dispenser : Desig... | Pump | Pumps inaccurate size... | Air in line | |
| 6 | F-8 | F4 done | electrical | dispenser : Desig... | Pump | Pumps inaccurate size... | Air in line | |
| 7 | F-5 | F5 | electrical | display : Design::... | Pump | Broken keypad | | Therapy delay |
| 8 | F-9 | F5 done | electrical | display : Design::... | Pump | Broken keypad | | Therapy delay |
| 9 | F-6 | F6 | electrical | sensor : Design::... | Pump | Drop in sensitivity | High glucose-level undetected Low glucose-level undetected | |

The sample FMEA Table demonstrates the behavior of the row cloning feature. The selected rows (highlighted in blue) have been cloned, and each row clone appears right below the row from which it was cloned.



Recommendation

It is recommended that you change the names of the new FMEA Items that are created by cloning table rows to meaningful ones.

Sample model

The model used for the figures of this page is the *Medical FMEA and Hazard Analysis* sample model that comes with Cameo Safety and Reliability Analyzer plugin. To open this model do one of the following

- Download [Medical FMEA and Hazard Analysis.mdzip](#).
- Open the model from the <modeling tool installation directory>\samples\Safety and Reliability Analysis directory.

Related pages

- [Reliability analysis using FMEA](#)
 - [Describing FMEA Items](#)