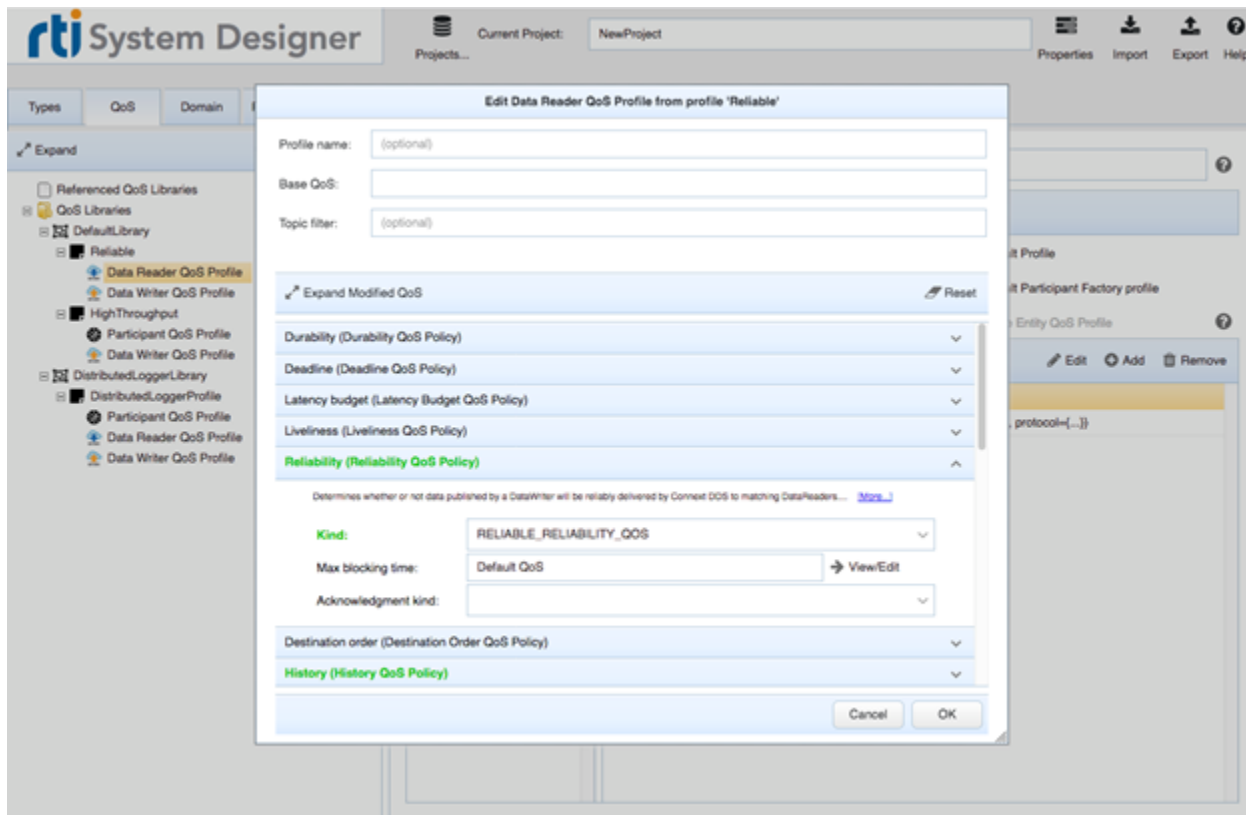


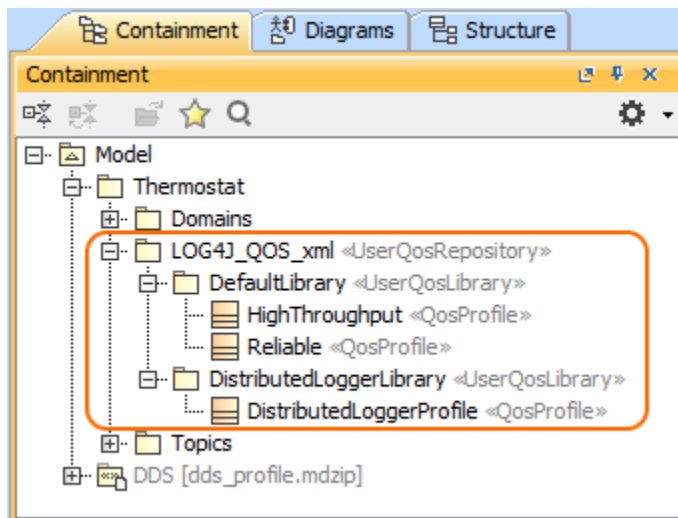
# Importing QoS Profile

You can import your already existing QoS Profiles in DDS XML format created with e.g. RTI System Designer, as shown in figure below.



To import QoS Profile

1. From the [main menu](#), select **Tools > DDS > Import QoS Profile**.
2. In the **Select DDS XML file containing QoS libraries** dialog, select QoS Profile.
3. Click **Import QoS**.
4. In the opened **Select Package** dialog, select the Package from the model wherein the profile will be imported.



If you modify the original QoS definition file, you can reimport it. Note, that the existing QoS Profiles will be replaced, so you will have to restore their assignments manually.

To reimport QoS

- Right-click the imported *UserQoSRepository* element and from the shortcut menu, select the **Reimport QoS Profile**.

