

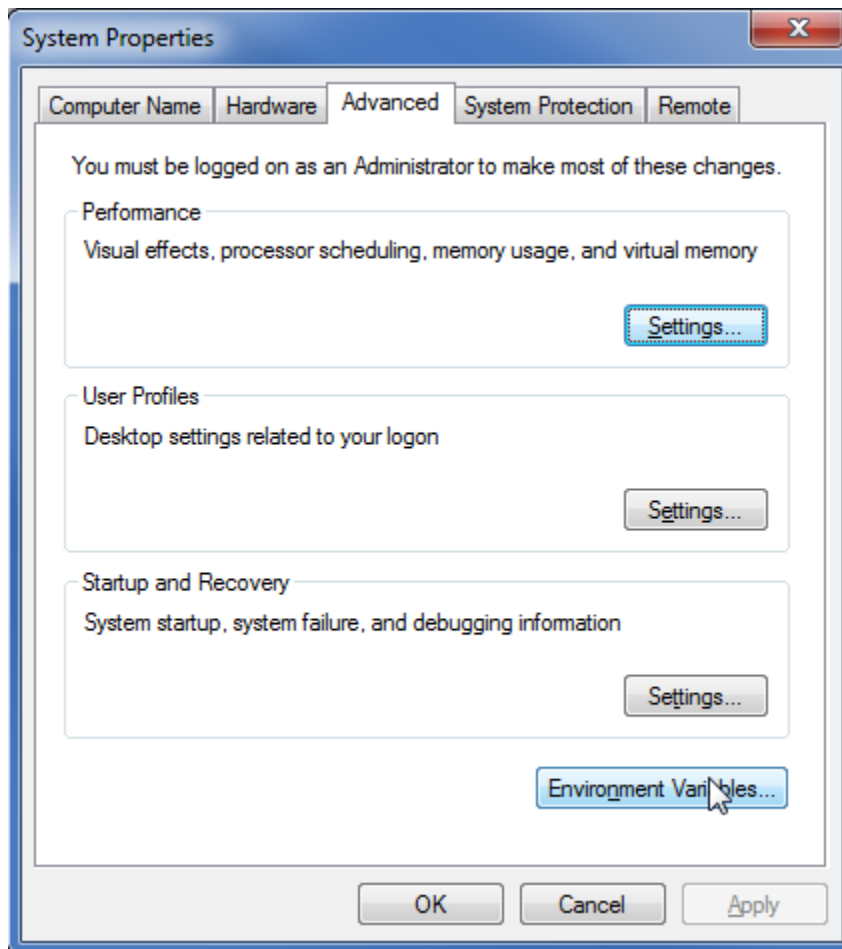
Integration with Maple

Cameo Simulation Toolkit supports Maple™, a mathematical computation engine, to analyze and solve mathematical expressions. Once you have installed Maple™, you can specify it as the language of opaque expressions.

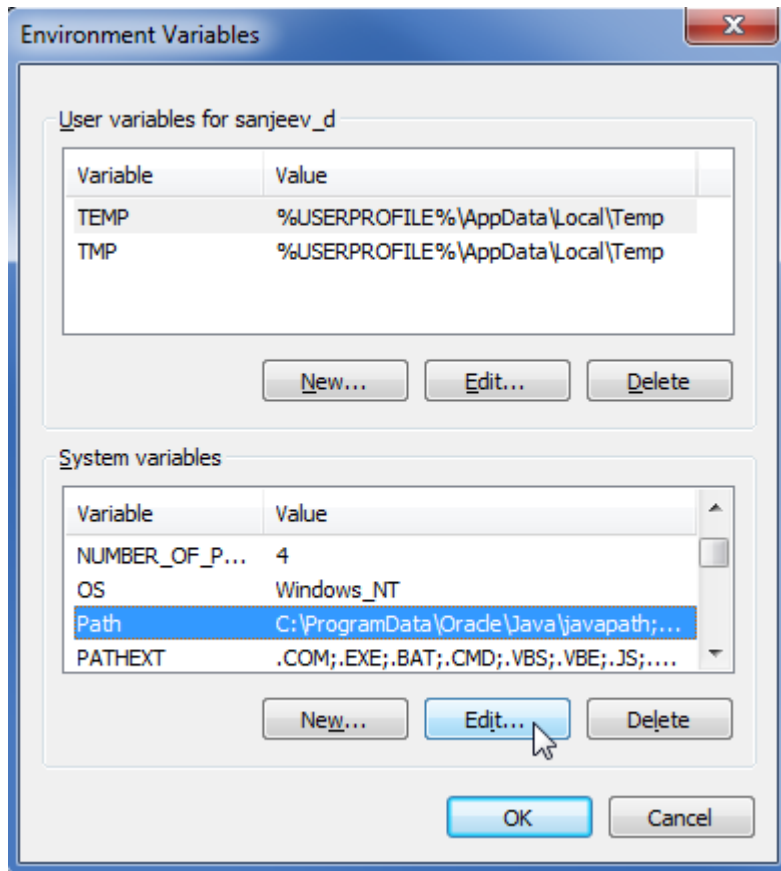
First, you must install Maple™ on your local machine and set up your system in order to call Maple™ and use it in Cameo Simulation Toolkit.

To use Maple™ on a 64-bit version of Microsoft Windows

1. Install Maple™.
2. Add the path of the Maple™ bin folder to the path environment variable using the steps as follows
 - 2.1 Double-click **System** in the Control Panel to open the **System Properties** dialog.
 - 2.2 Click the **Advanced** tab.

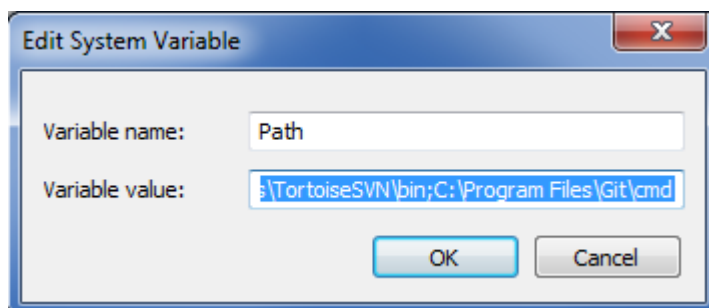


2.3 Click the **Environment Variables** button to open the **Environment Variables** dialog.



2.4 Select **Path** from the **System** variables group and click the **Edit** button to open the **Edit System Variable** dialog.

2.5 Enter the path to the Maple™ bin folder in the **Variable value** box. There are two methods to enter the path: if the **Variable value** box has a default value, you need to add the following path at the end of the text ;C:\Program Files\Maple 17\bin.X86_64_WINDOWS or (ii) if the **Variable value** box is empty, you can just add the following path C:\Program Files\Maple 17\bin.X86_64_WINDOWS.



2.6 Click **OK**.

3. Restart Windows.

To use Maple™ on Mac 10.7 or Linux

1. Install Maple™.
2. Open Maple™ and follow these steps:
 - 2.1 Type: kernelopts(mapledir) into command input to find the maple dir.
 - 2.2 Type: kernelopts(bindir) into command input to find the bin dir.
3. Open the /etc/launch.conf (if this file does not exist, create launch.conf with any text editor) and follow these steps:
 - 3.1 Type setenv DYLD_LIBRARY_PATH <BINDIR> where <BINDIR> is the bin dir from step 2.2

- 3.2 Type `setenv MAPLE <MAPLEDIR>` where `<MAPLEDIR>` is the maple dir from step 2.1
- 3.3 Save `launch.conf`.

- 4. Restart the computer.

Footnote

Maple™ is a registered trademark of Waterloo Maple, Inc.